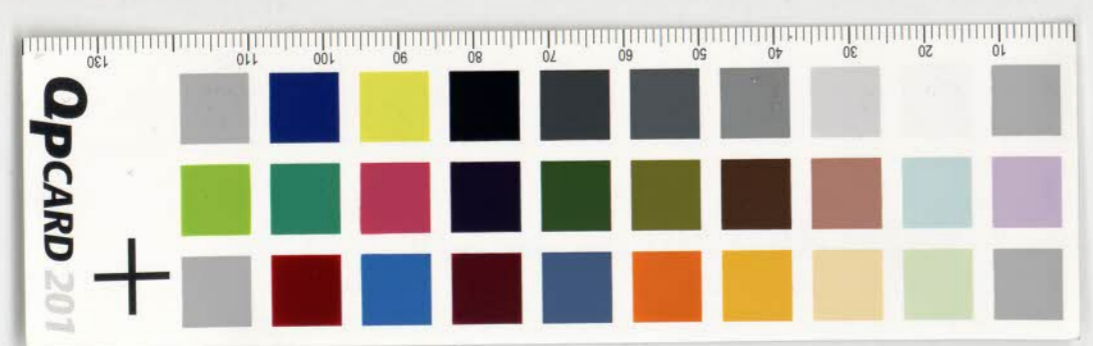


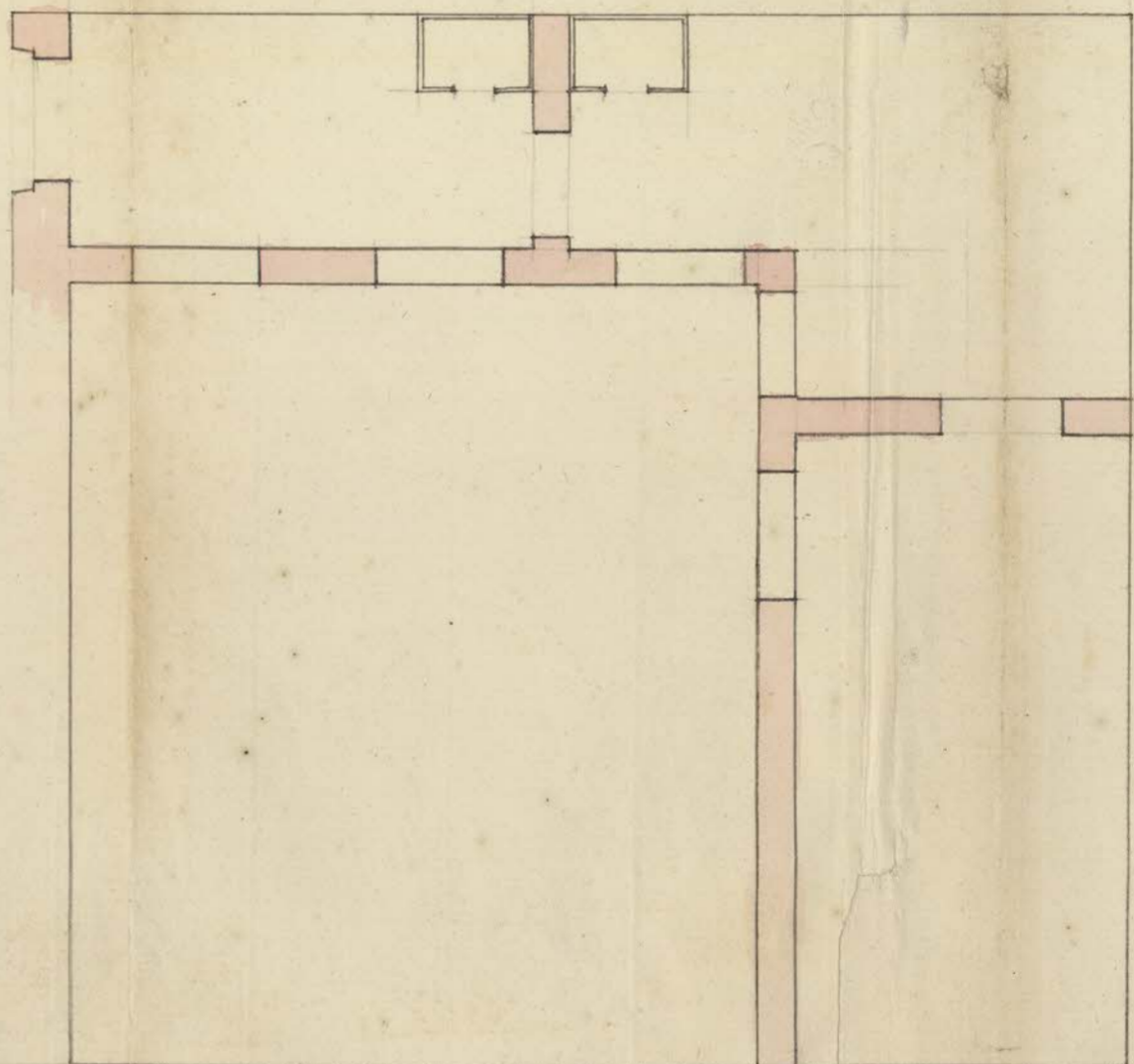
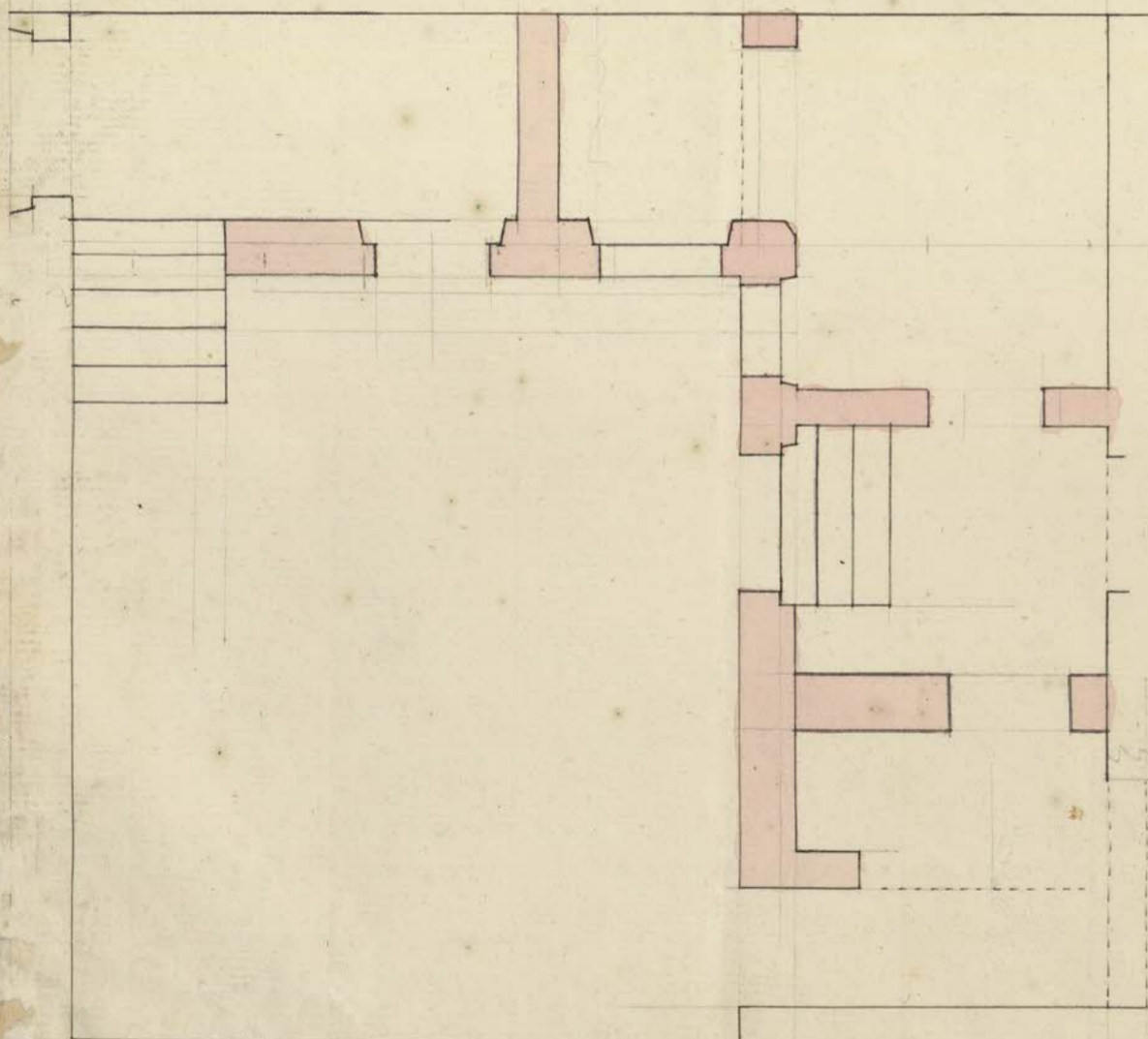
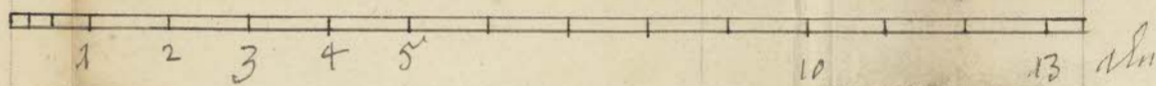
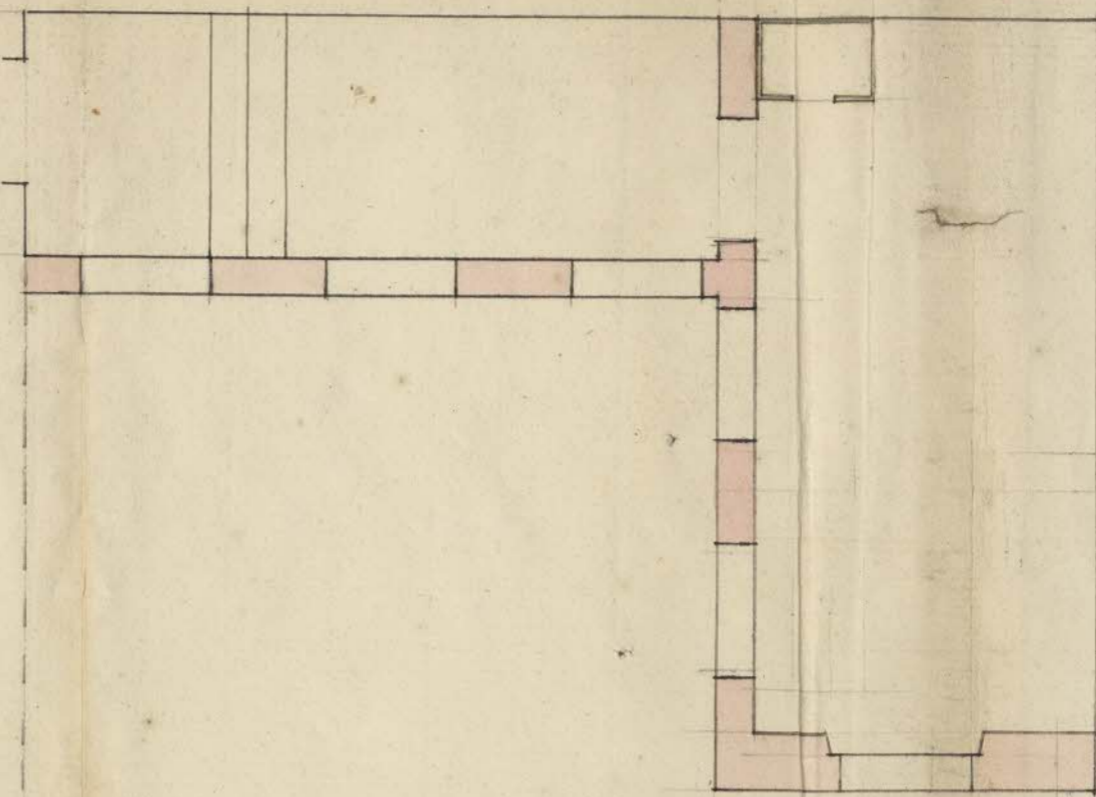
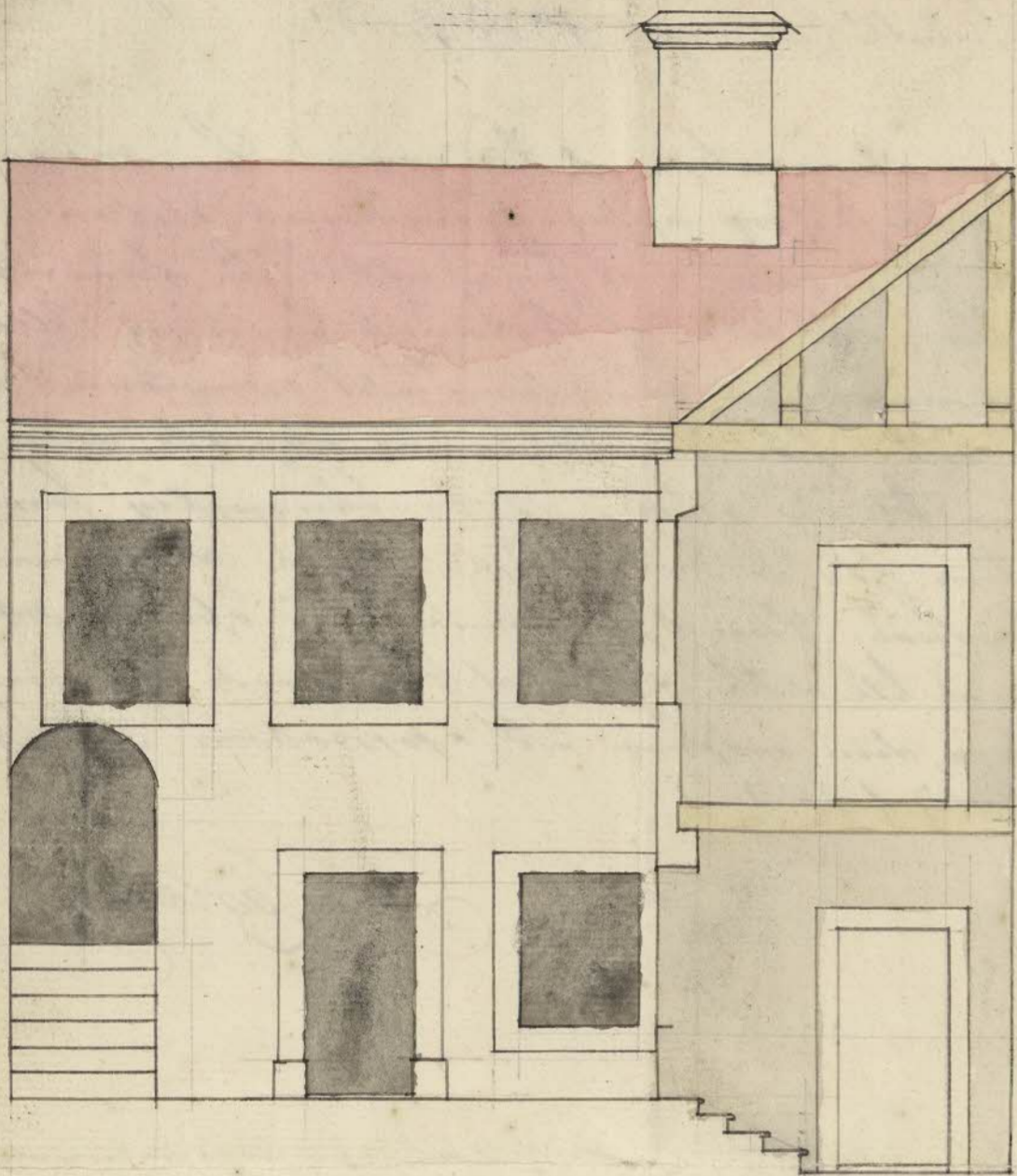
N: 2A. Graef. N: 18. Juli 1732.ubi. Aucto. Dord. Poggendorf
ad. Archiep. Collegio, P. 1732.

Summa Reparatione of Lützowum from manufactoria
ten. In Lützowum. Aucto. Poggendorf. Descriptio summe
indiv. in quod. et sum. ubi. Lützowum. Poggendorf.
of. Aucto. Dord. Poggendorf. Collegio.
Capitulum sum. in. ten. Poggendorf. Poggendorf.
and. ubi. Lützowum. Capitulum. in. ubi. Lützowum.
summa. reparatio. sum. in. ten. Poggendorf. Poggendorf.
Poggendorf. sum. in. ten. Poggendorf. Poggendorf.
Lützowum. ubi. Lützowum. Poggendorf. Poggendorf.
Lützowum. sum. in. ten. Poggendorf. Poggendorf.
Lützowum. 1732.

J. L. Poggendorf

45
65
220
220
7
203





45.

