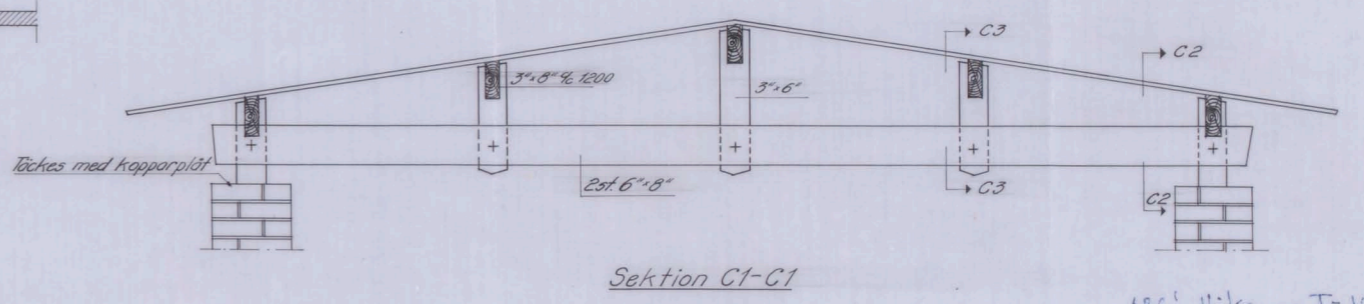
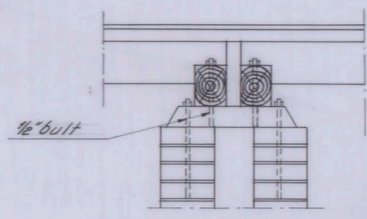


Taksplan

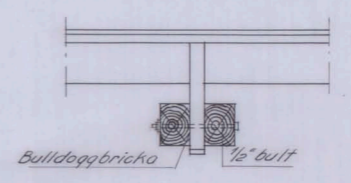


Sektion C1-C1

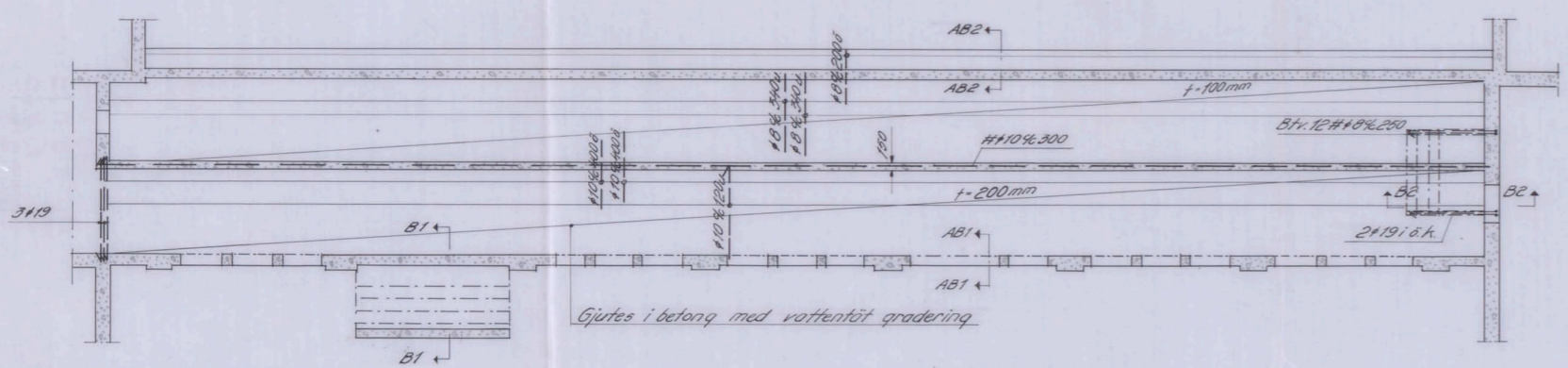
ABS! Vikta av T-100 till parapets konstruktion.



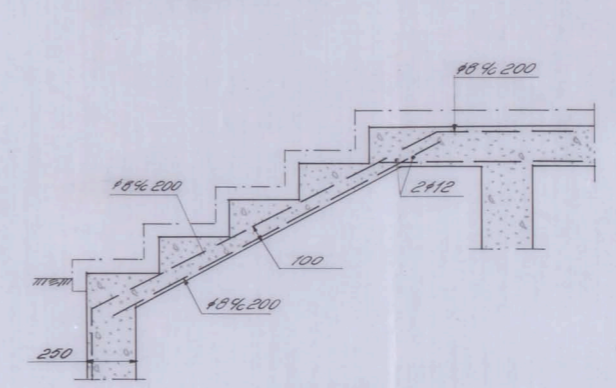
Sektion C2-C2



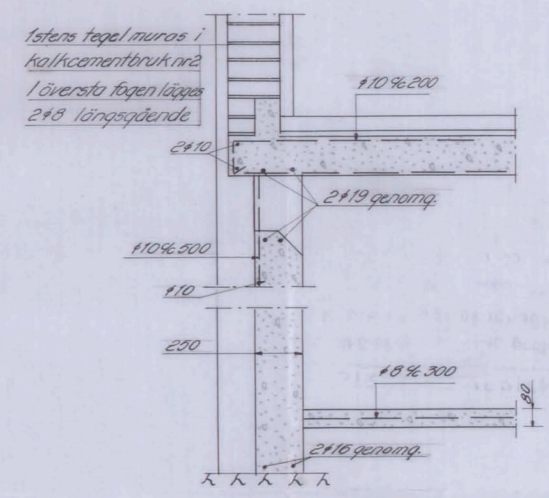
Sektion C3-C3



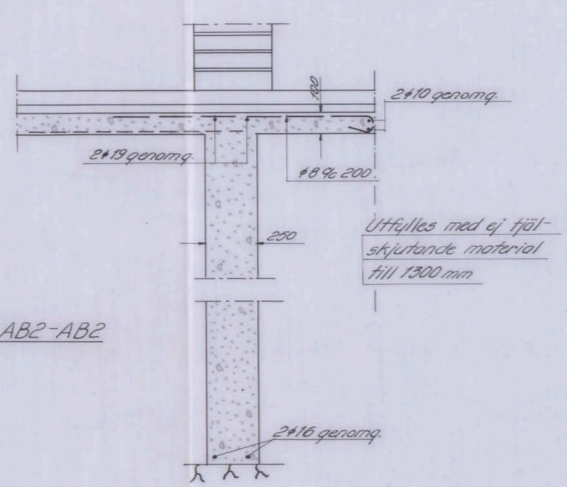
Golvbjälklag



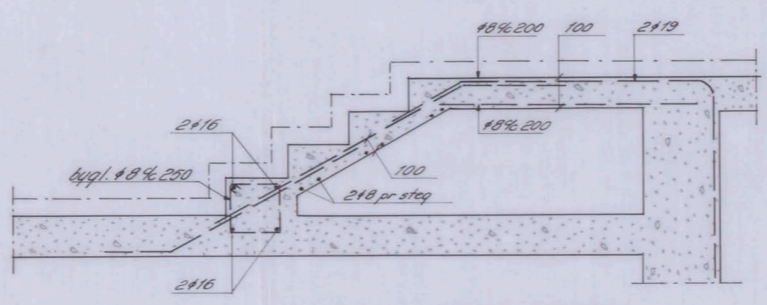
Sektion B1-B1



Sektion AB1-AB1



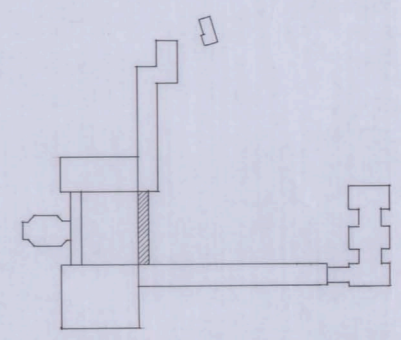
Sektion AB2-AB2



Sektion B2-B2

KONSTRUKTIONSRITNING
 jämte tillhörande beräkning godkänd av
 Stockholms Stads Byggnadsnämnd
 den 19 juli 1920 med villkor, som
 av protokoll för samma dag inhämtas.

Ant. Jansson



Arkivskåpet

Folkskola i Västertorp			
Pergola			
Planer och detaljer			
1:100, 1:20	I.S.		4822
	I.P.	10.1.49.	17