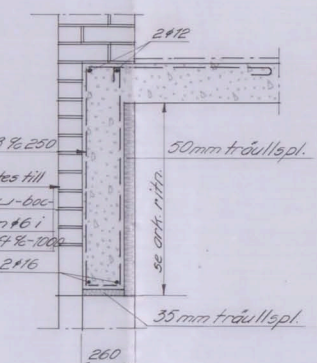
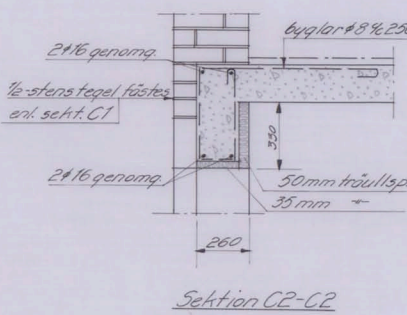


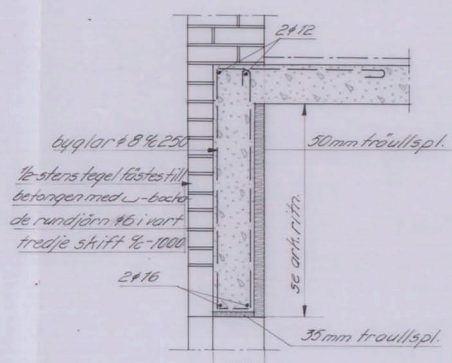
Bjälklag över bottenvåning



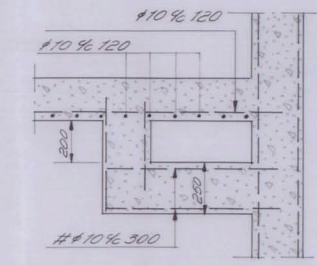
Sektion C1-C1



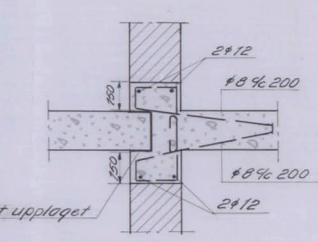
Sektion C2-C2



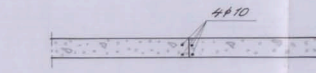
Sektion C3-C3



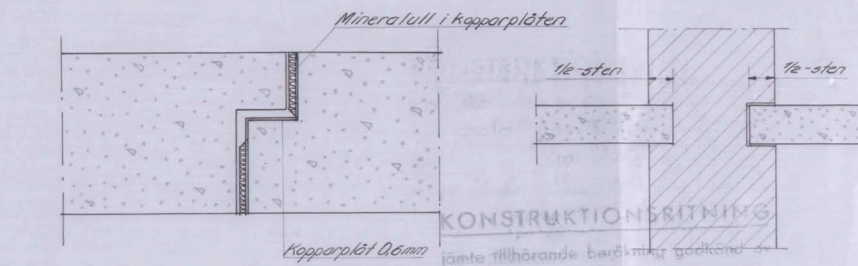
Sektion B8-B8



Sektion C4 1:20



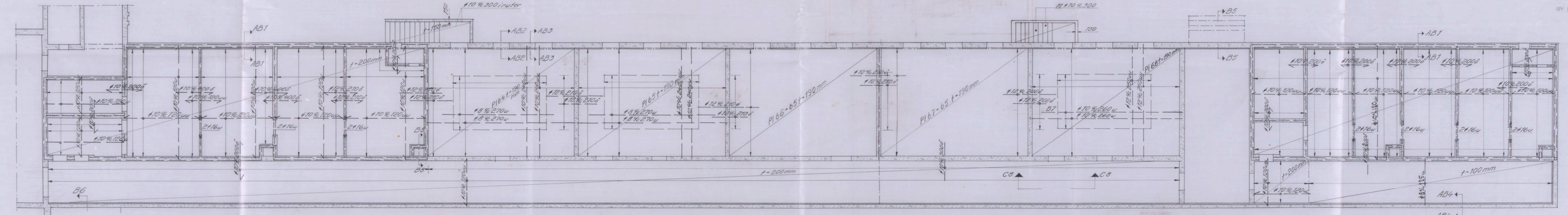
Sektion C5 1:20



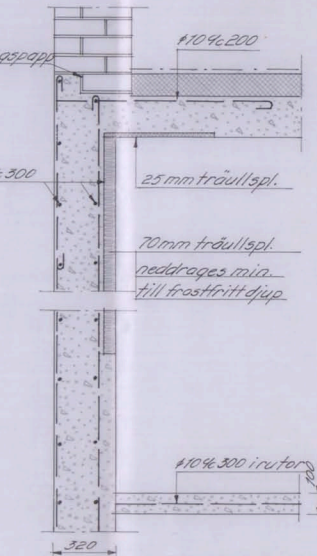
Sektion C6 1:20

KONSTRUKTIONSBÄTTNING  
jämte tillhörande bestämmelser  
Stockholms Stads byggnadsnämnd  
den 18/11/47  
av protokoll nr 1075 för den dag inlämnades

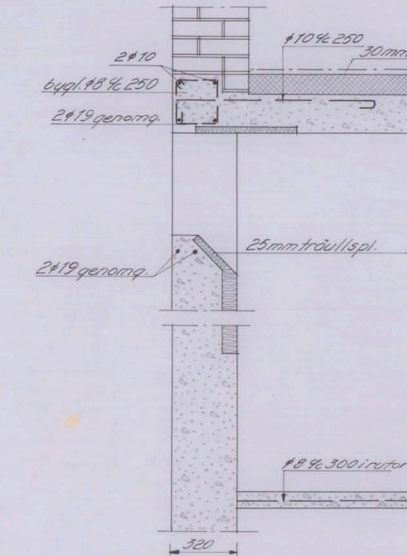
hant. summa



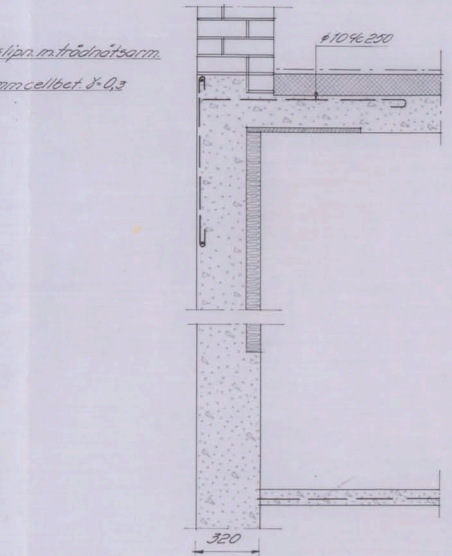
Bjälklag över källarvåning



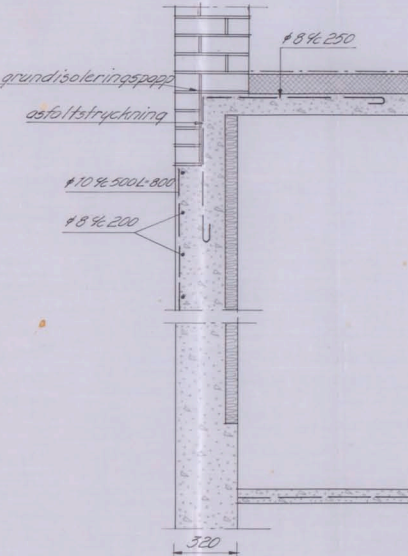
Sektion AB1-AB1



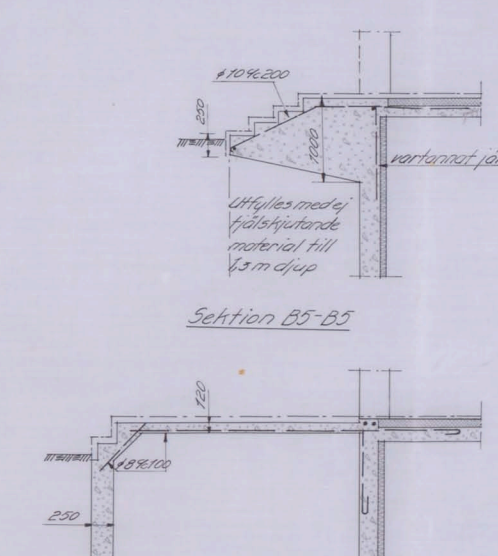
Sektion AB2-AB2



Sektion AB3-AB3



Sektion AB4-AB4



Sektion B5-B5



Sektion B6-B6

B	Pannrum	15.8.49	
A	Platta i brännstfärdstrå		
ODEENS INGENJÖRSBYRÅ AB STOCKHOLM			
Folksholan i Västertorp			
Folksholan Planer			
1100	1:50	I.S.	4822
1:20	I.P.	10.1.49	3