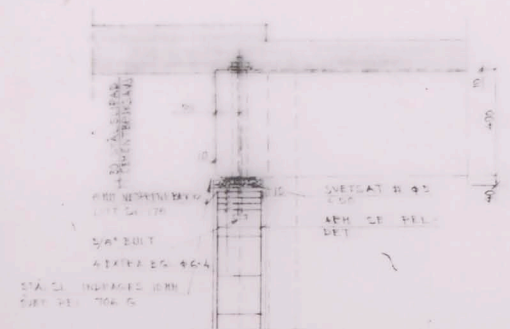
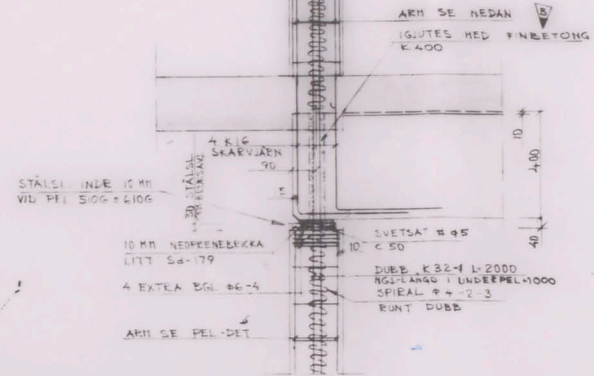


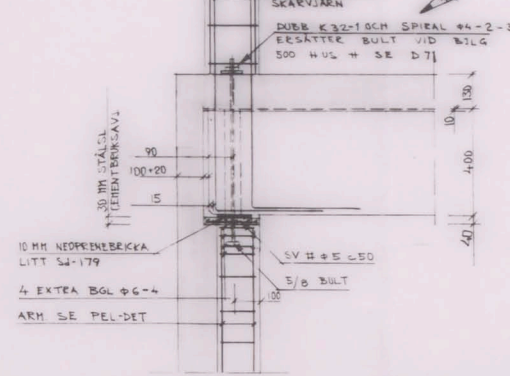
A 71 1:10
(K45, K60, K67, K94)



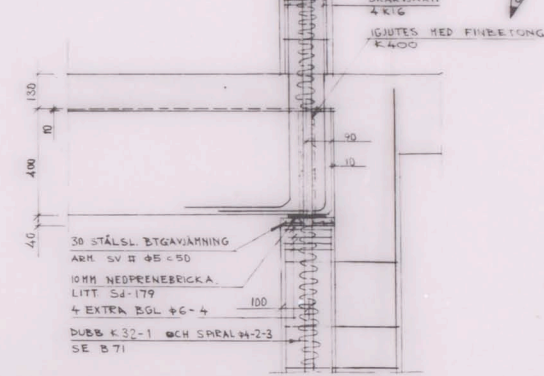
B 71 1:10
(K42, K44, K67, K68, K98, K100, K101, K102, K103, K104, K105, K106)



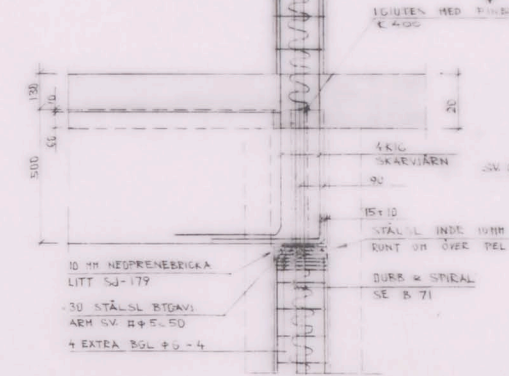
C 71 1:10
(K44, K99, K100, K104, K95, K96, K97)



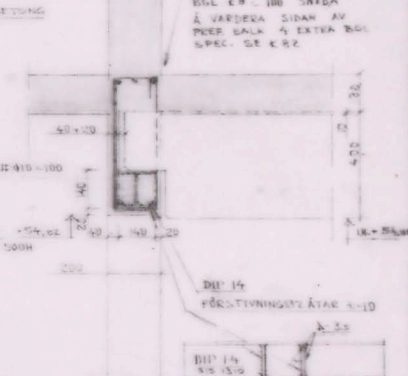
D 71 1:10
(K43, K99, K105, K93)



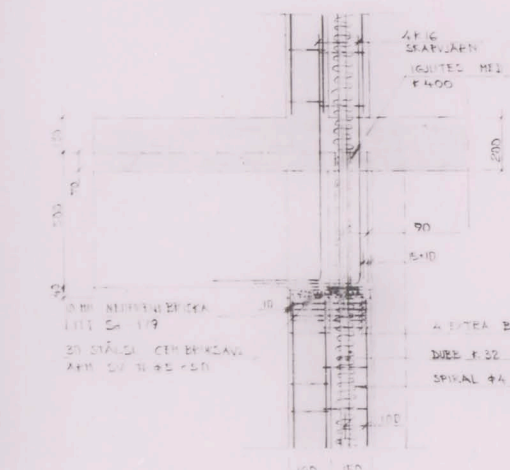
E 71 1:10
(K45, K99, K100, K105, K93, K94)



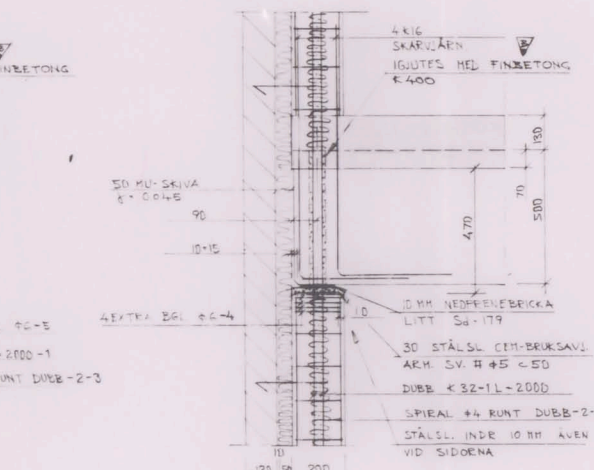
AA 71 1:10
(K100, K94)



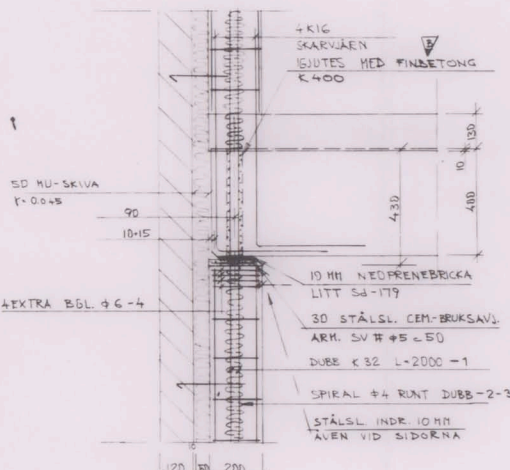
F 71 1:10
(K42, K43)



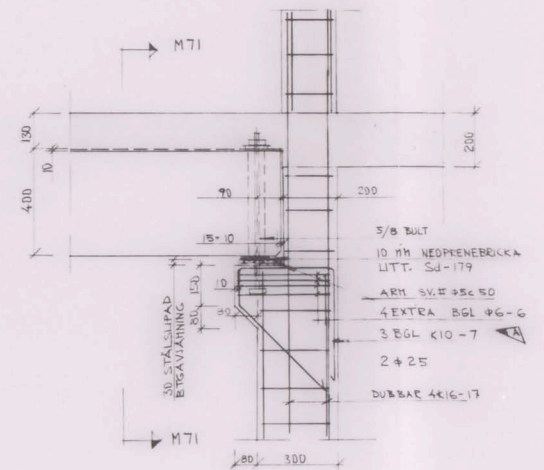
G 71 1:10
(K43, K44, K105, K106, K107)



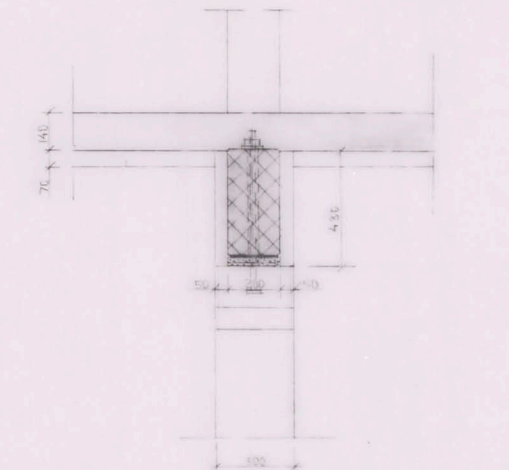
H 71 1:10
(K42, K43, K67, K98, K99, K104, K105, K106)



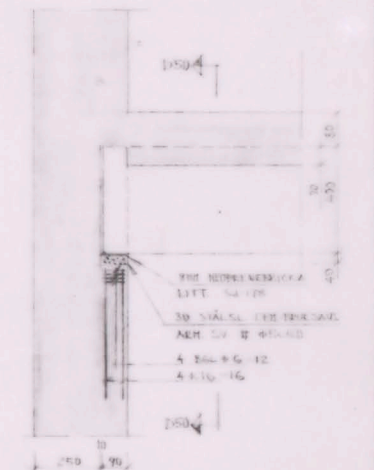
L 71 1:10
(K42, K66, K104, K61)



M 71 1:10
(K42, K66, K104, K61)

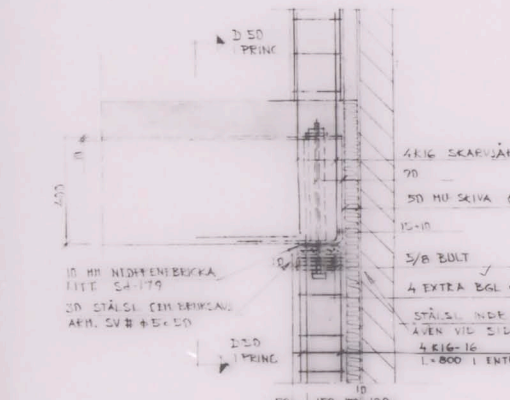


AB 71 1:10
(K99, K93)

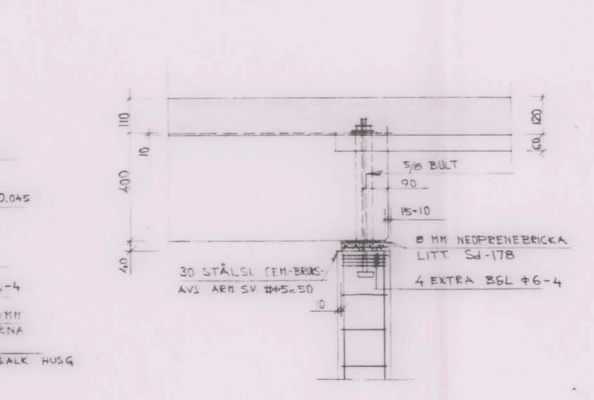


638

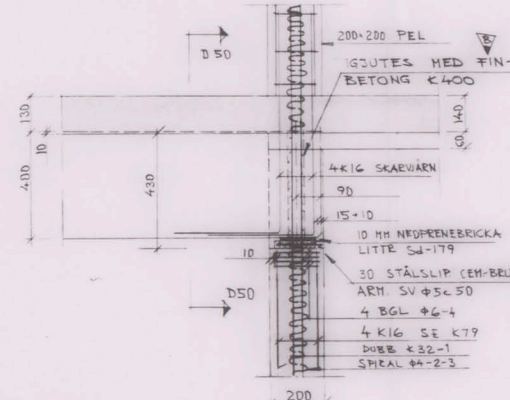
N 71 1:10
(K44, K100, K104, K94)



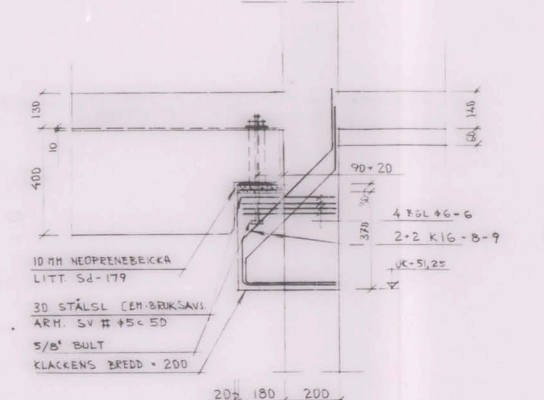
P 71 1:10
(K101, K69, K64, K95)



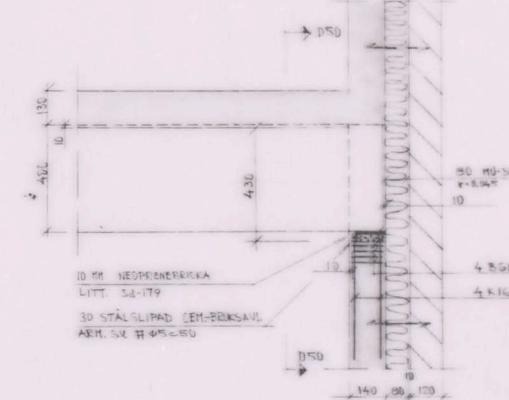
R 71 1:10
(K63, K68)



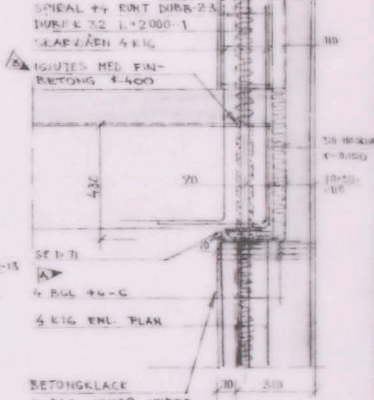
S 71 1:10
(K67, K62)



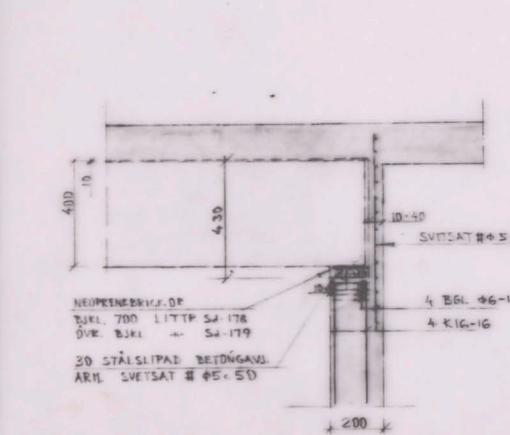
T 71 1:10
(K66, K61)



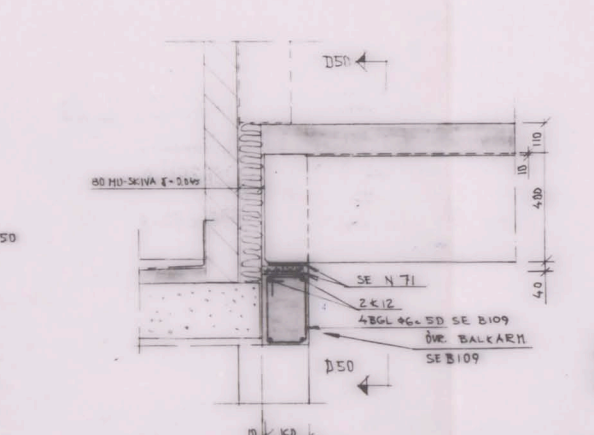
AD 71 1:10
(K99, K93)



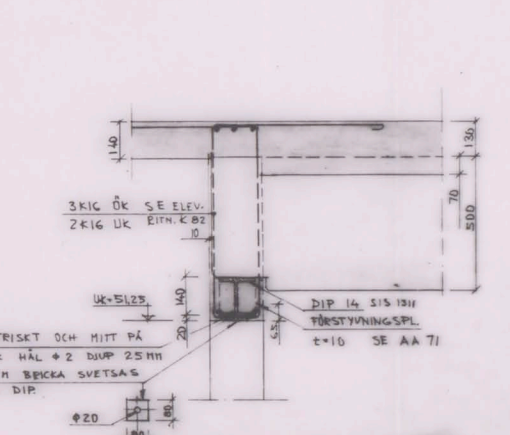
V 71 1:10
(K44, K99, K101, K104, K92, K95)



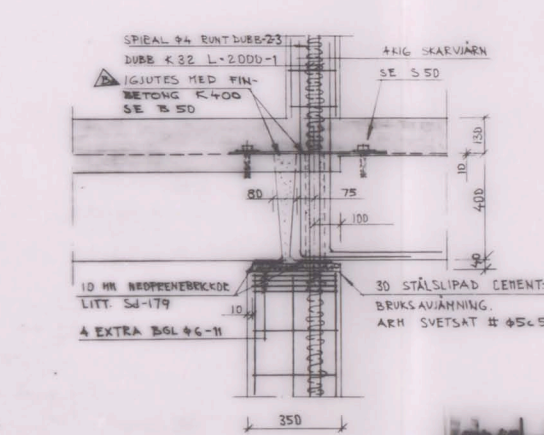
X 71 1:10
(K100, K94)



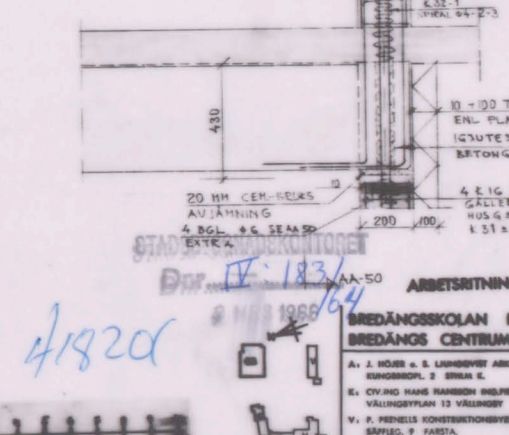
Y 71 1:10
(K99, K93)



Z 71 1:10
(K99, K93)



AC 71 1:10
(K42, K93, K66, K104, K61, K92, K95)



ANM: ALLT FÖRESKRIFTER SE BITH K0 TILLHÖR ARN-SPEC 71/1, 71/2, 71/3

Project information block including date (4/1920), drawing title (ARBETSNING), location (BREDÅNGSKOLAN KV. CONCORDIA BREDÅNGS CENTRUM, STOCKHOLM), and a list of technical specifications (A, B, C, D, E, F, G, H, I, J, K, L, M, N, O, P, Q, R, S, T, U, V, W, X, Y, Z).