

# LILJEHOLMSBRON.

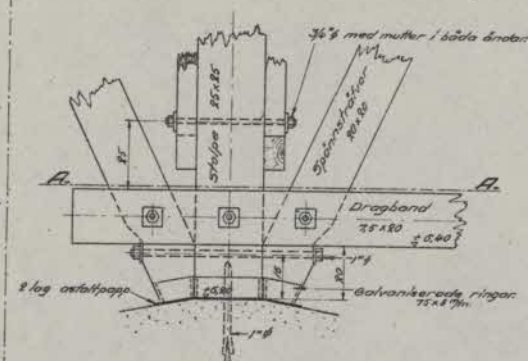
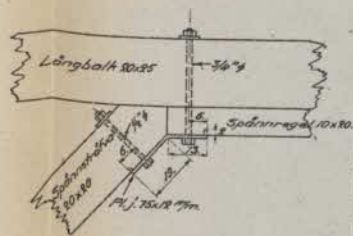
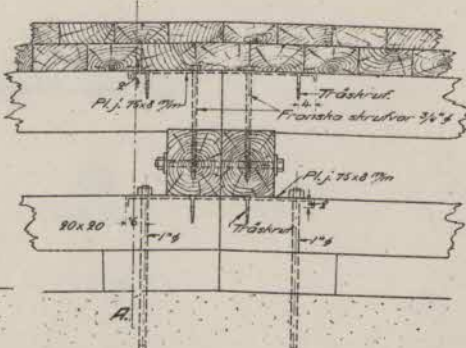
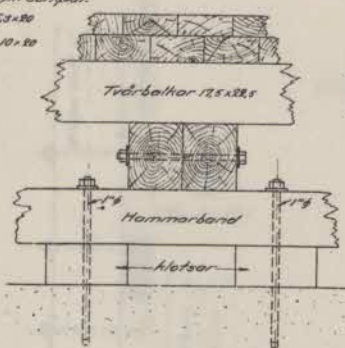
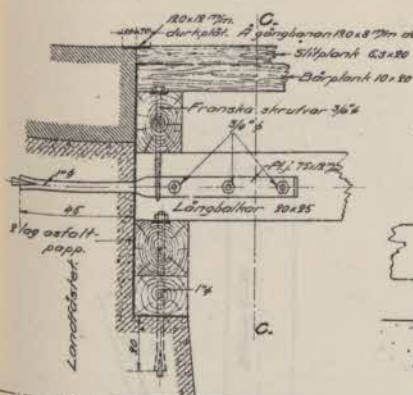
SEKTION A-A.

DETALJ (1)

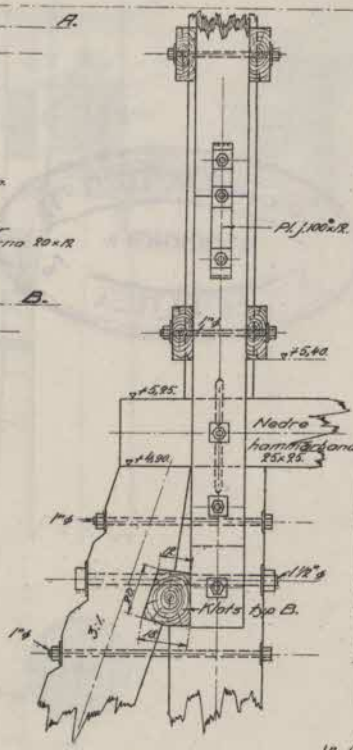
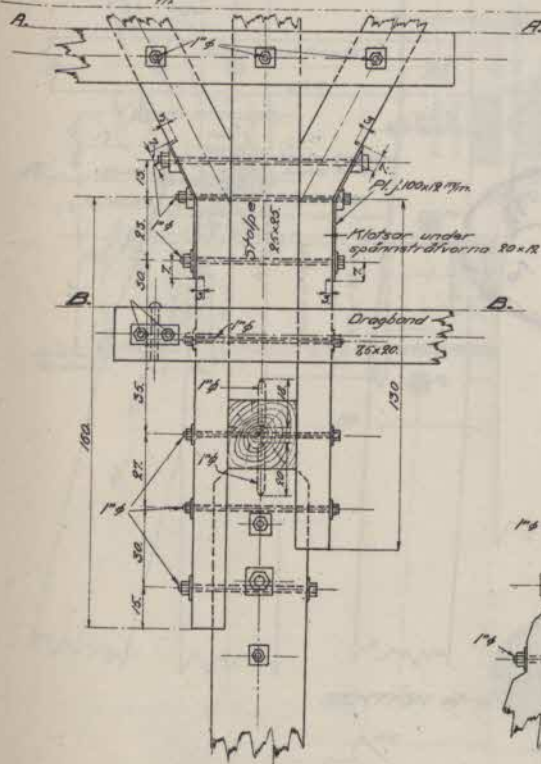
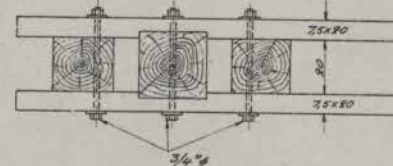
SKARFNING AF TVÄRBALK OCH HAMMARBAND C-C.

DETALJ (2)

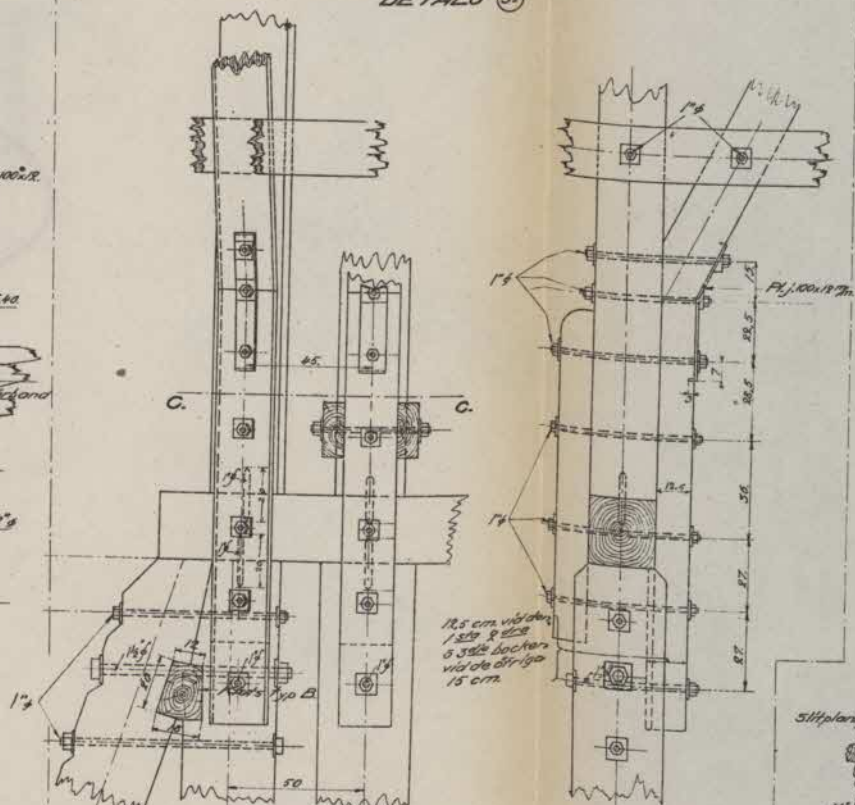
DETALJ (3)



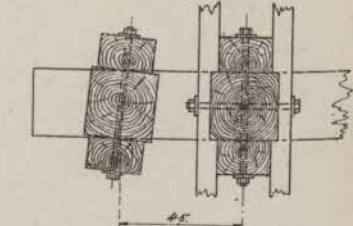
SEKTION A-A.



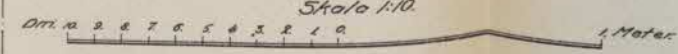
DETALJ (5)



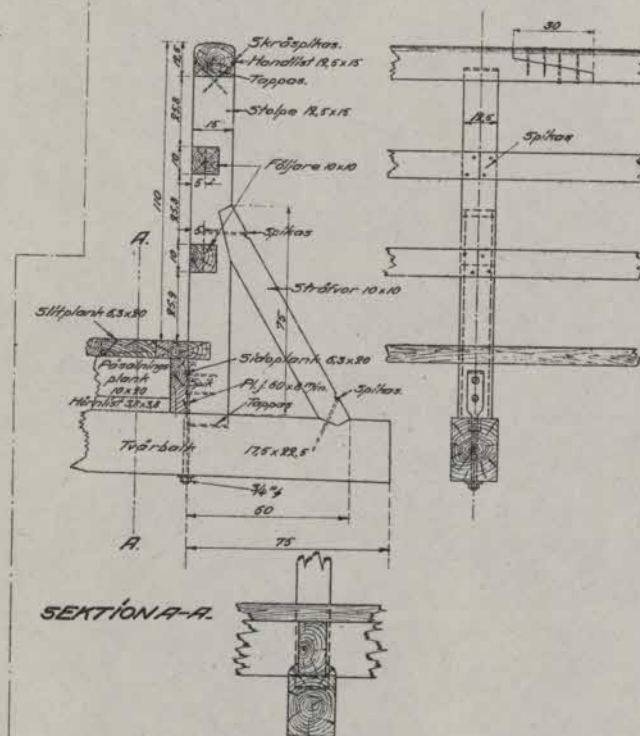
SEKTION C-C.



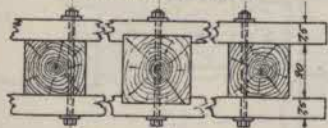
Skala 1:10



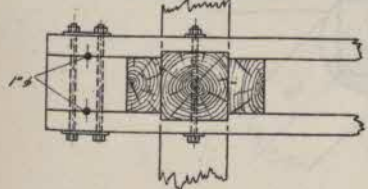
DETALJ AF BARRIÄR.



SEKTION A-A.



SEKTION B-B.



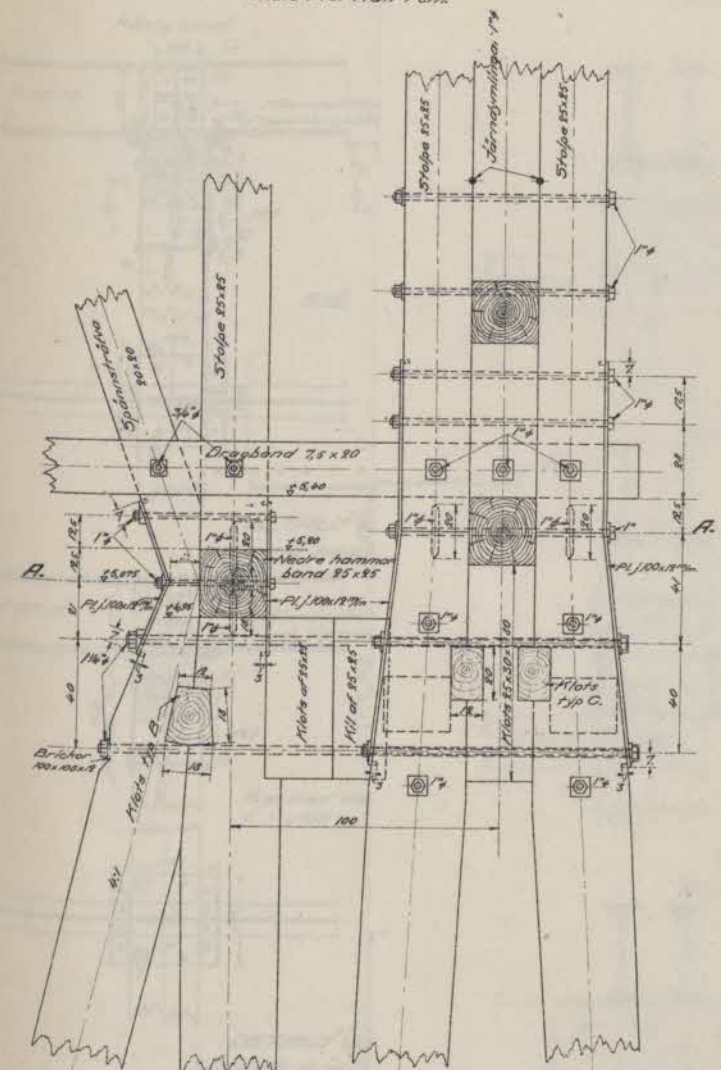
DETALJ (4)

Där endast en (vertikal) påte förkommer bortgår klotsen typ B, samt de tre sultarna.

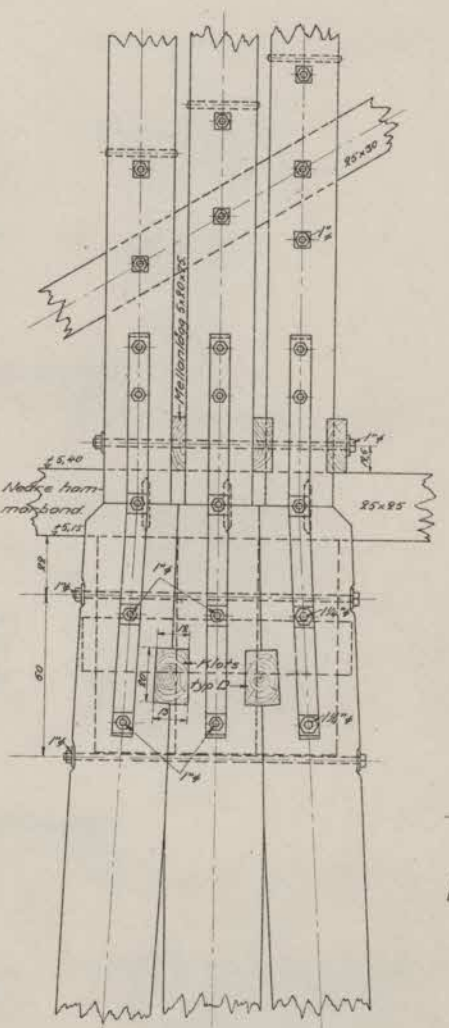
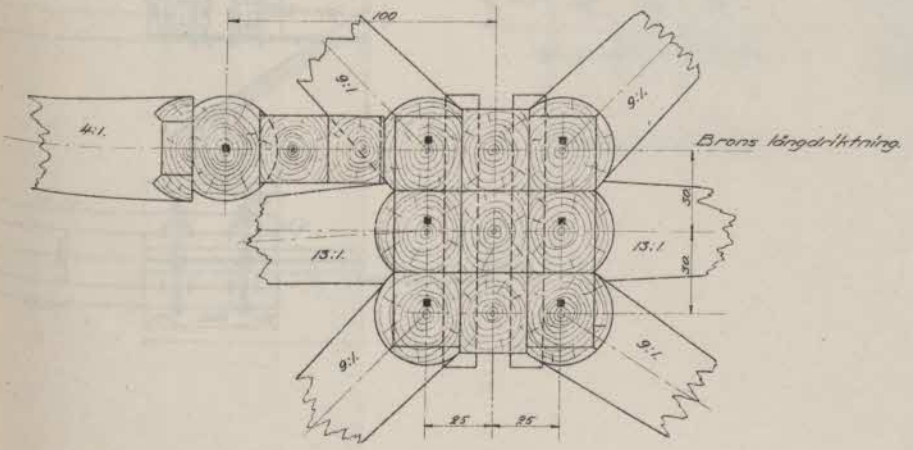


LILJEHOLMSBRON.  
PROVISORISK GATUBRO ÖFVER LILJEHOLMSVIKEN.

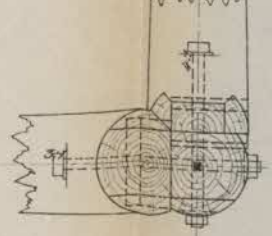
DETALJ 12  
Skala 1:10. MÅT i cm.



SEKTION A-A.



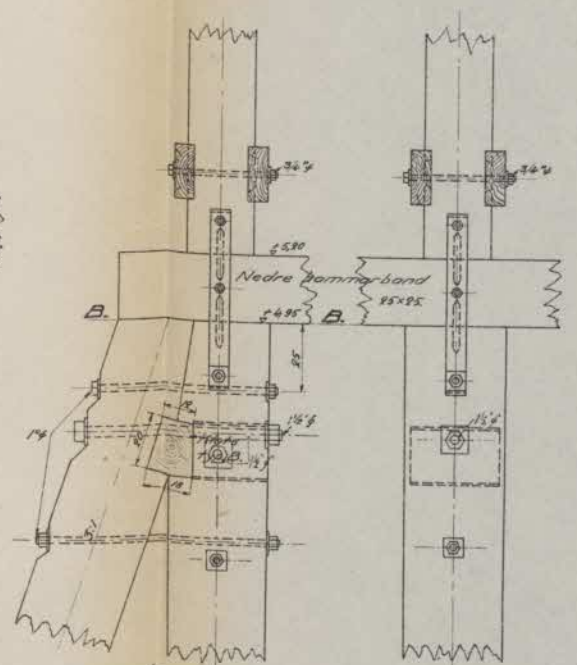
SEKTION B-B.



DETALJ 13  
Skala 1:10. MÅT i cm.

13a För 3 pålar.

13b För 2 pålar.

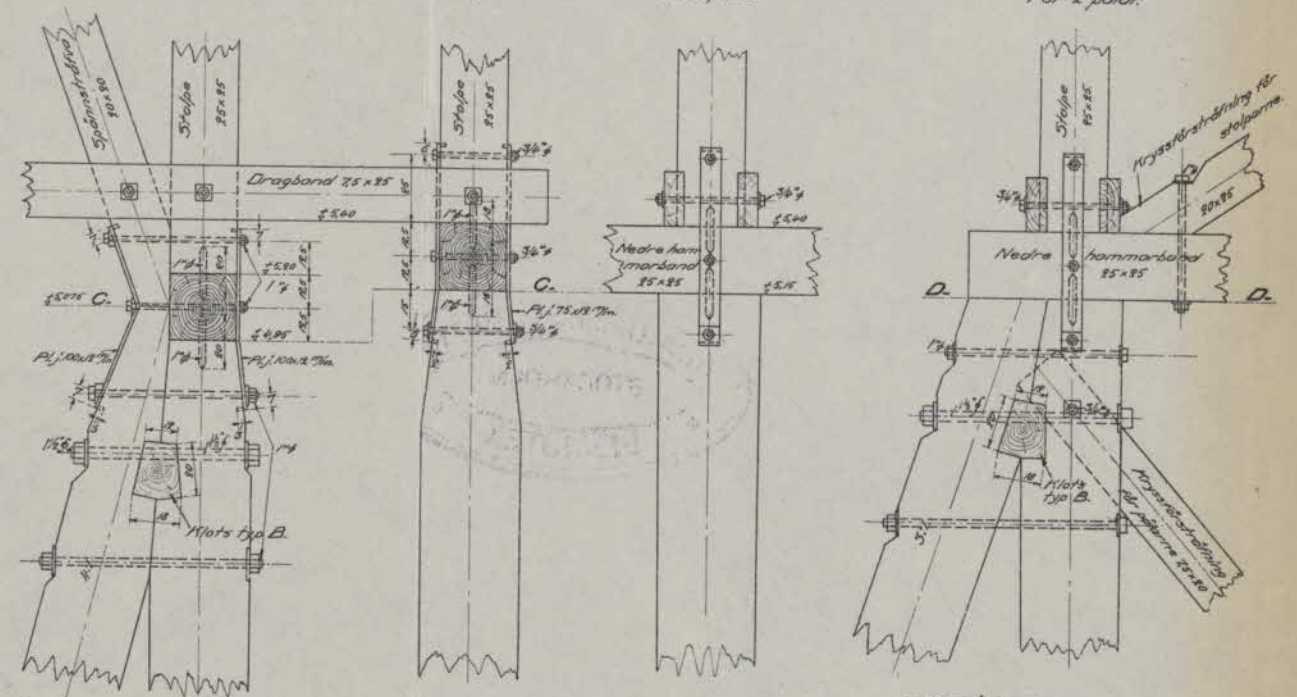


13c För 2 pålar.

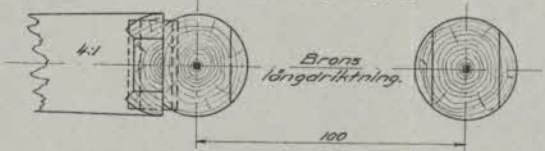
14a För 1 påle.

14b För 1 påle.

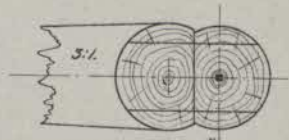
14c För 2 pålar.



SEKTION C-C.



SEKTION D-D.

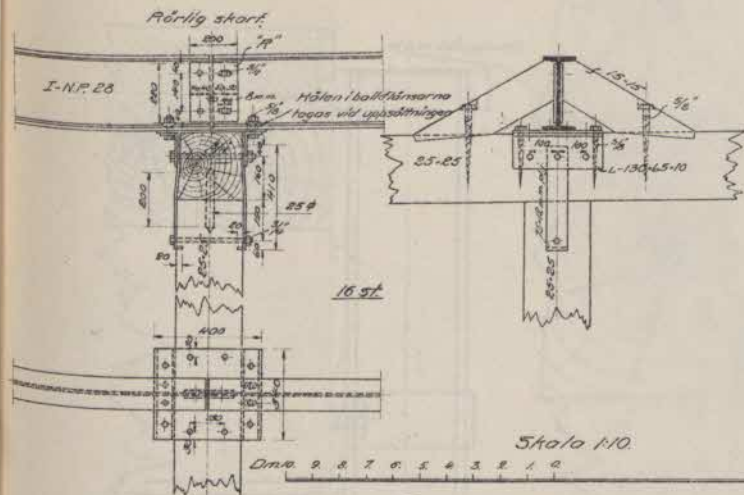


Skala 1:10.

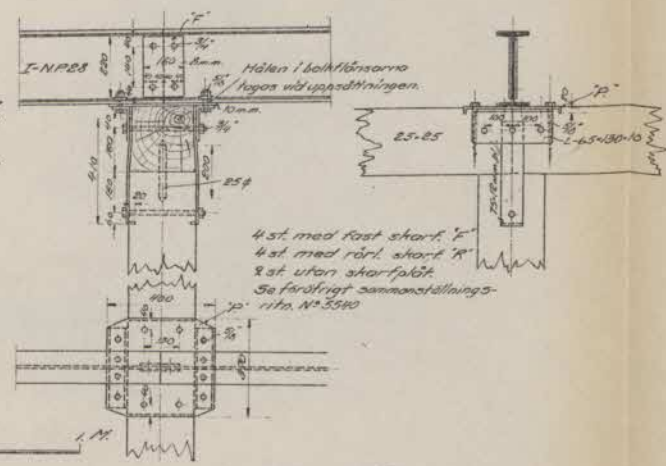




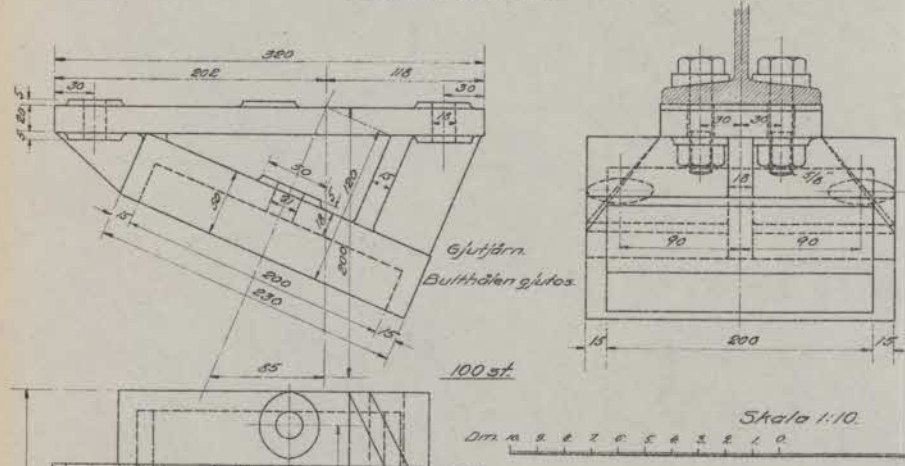
DETALJ 19.  
Skala 1:10. Mått i m.m.



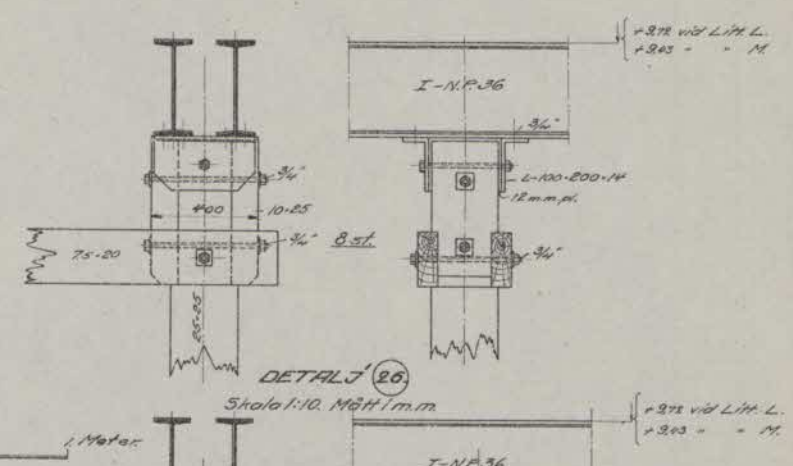
DETALJ 21.  
Skala 1:10. Mått i m.m.



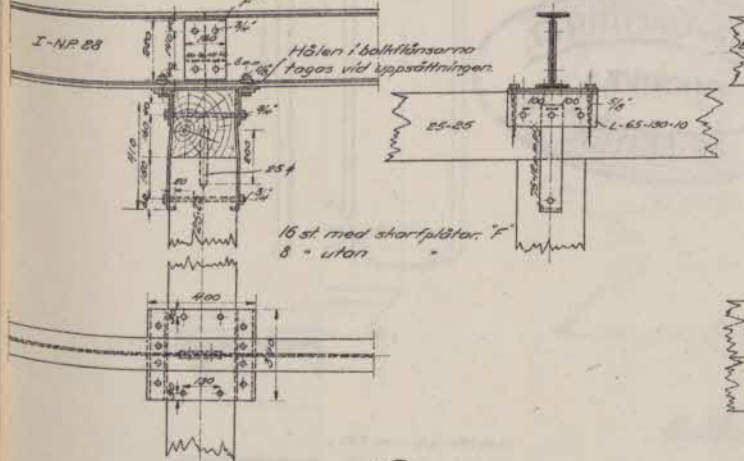
SKO VID DETALJ 23.  
Skala 1:2. Mått i m.m.



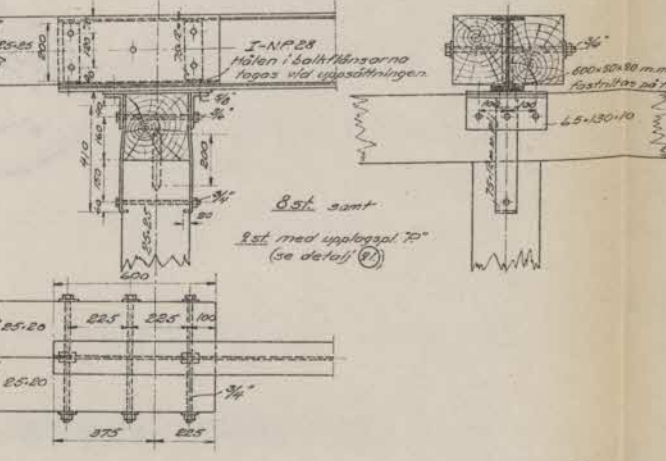
DETALJ 25.  
Skala 1:10. Mått i m.m.



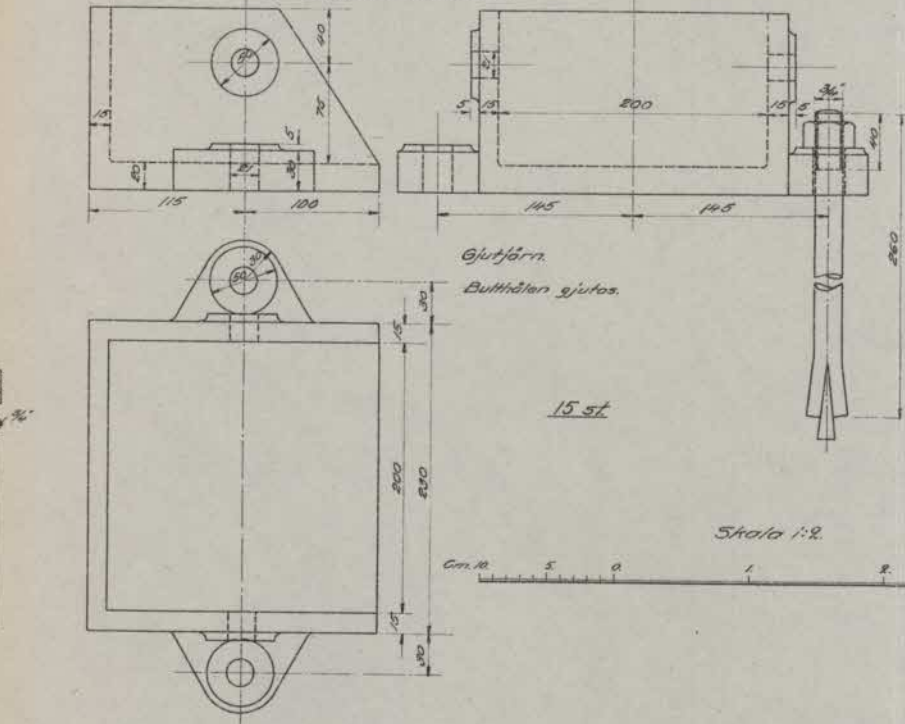
DETALJ 20.  
Skala 1:10. Mått i m.m.



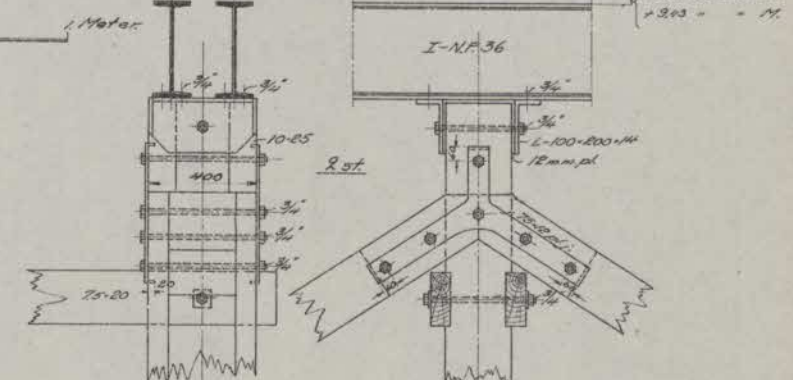
DETALJ 22.  
Skala 1:10. Mått i m.m.



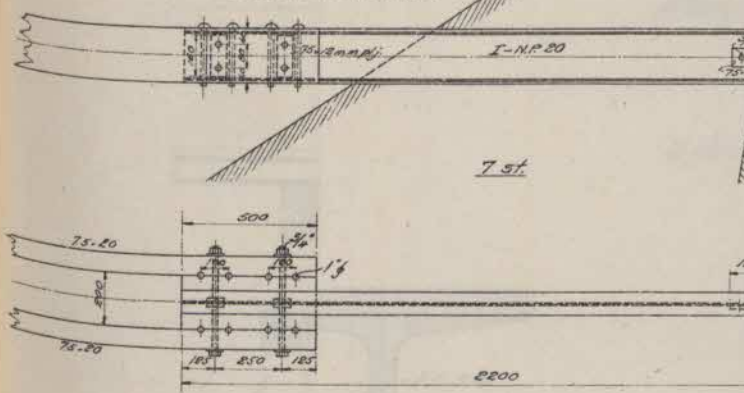
DETALJ 24.  
Skala 1:2. Mått i m.m.



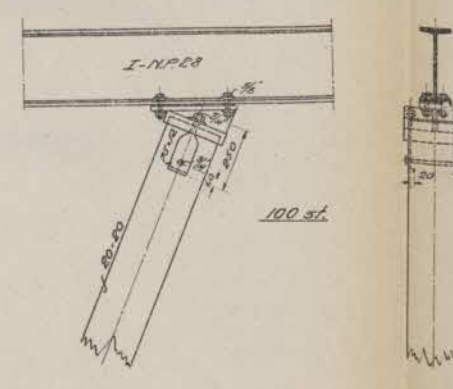
DETALJ 26.  
Skala 1:10. Mått i m.m.



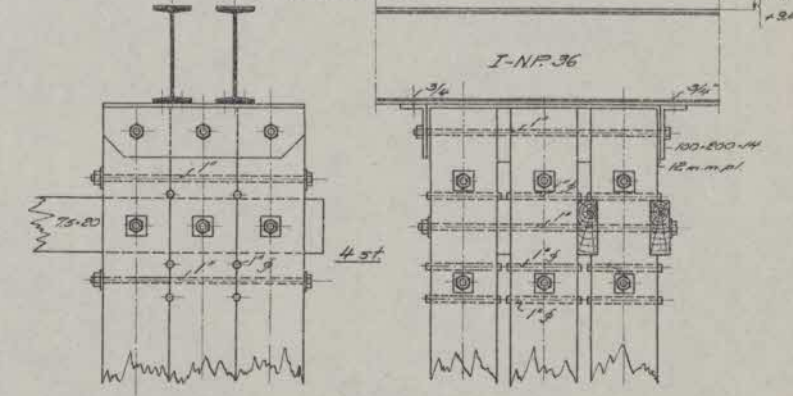
DETALJ 28.  
Skala 1:10. Mått i m.m.



DETALJ 23.  
Skala 1:10. Mått i m.m.

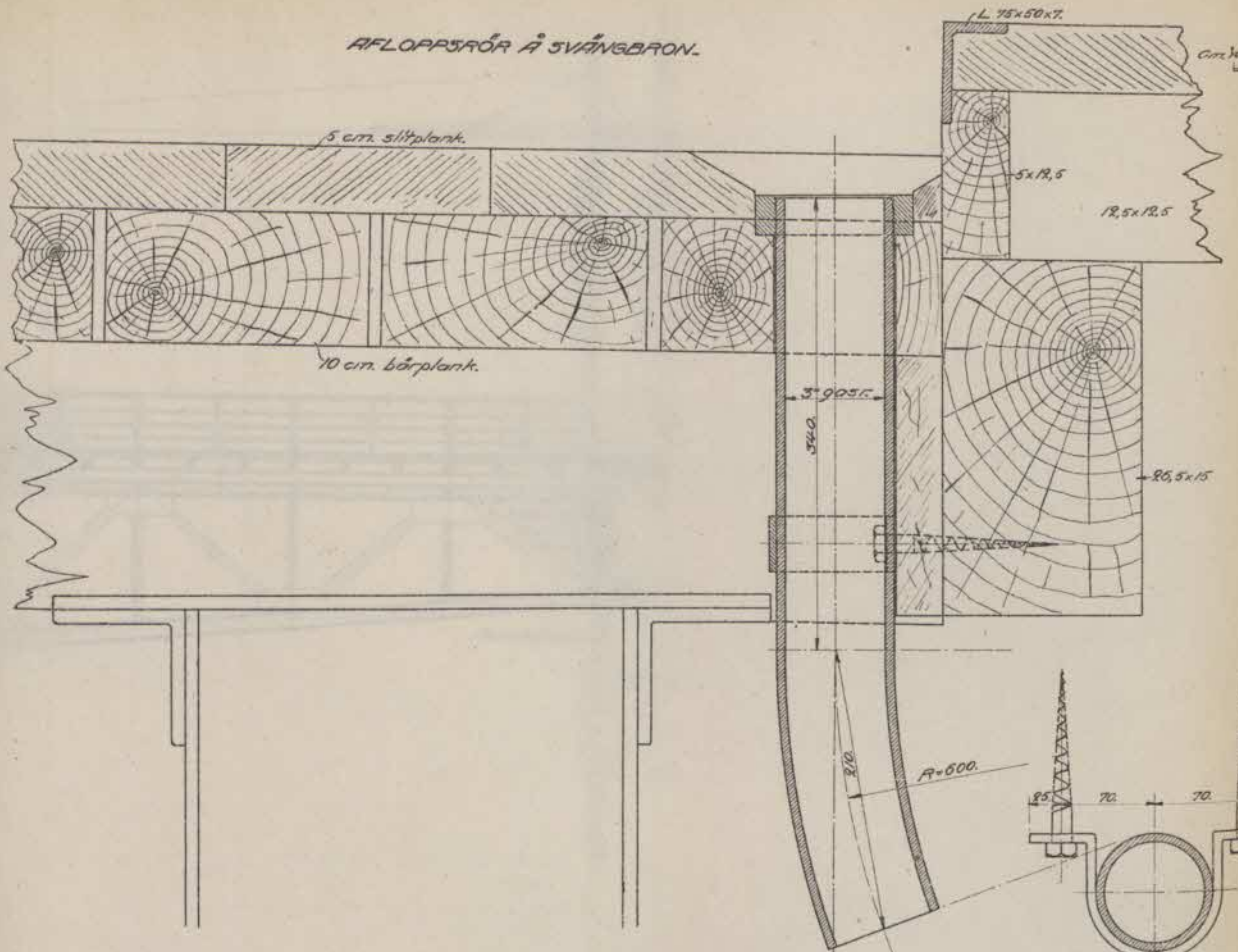


DETALJ 27.  
Skala 1:10. Mått i m.m.



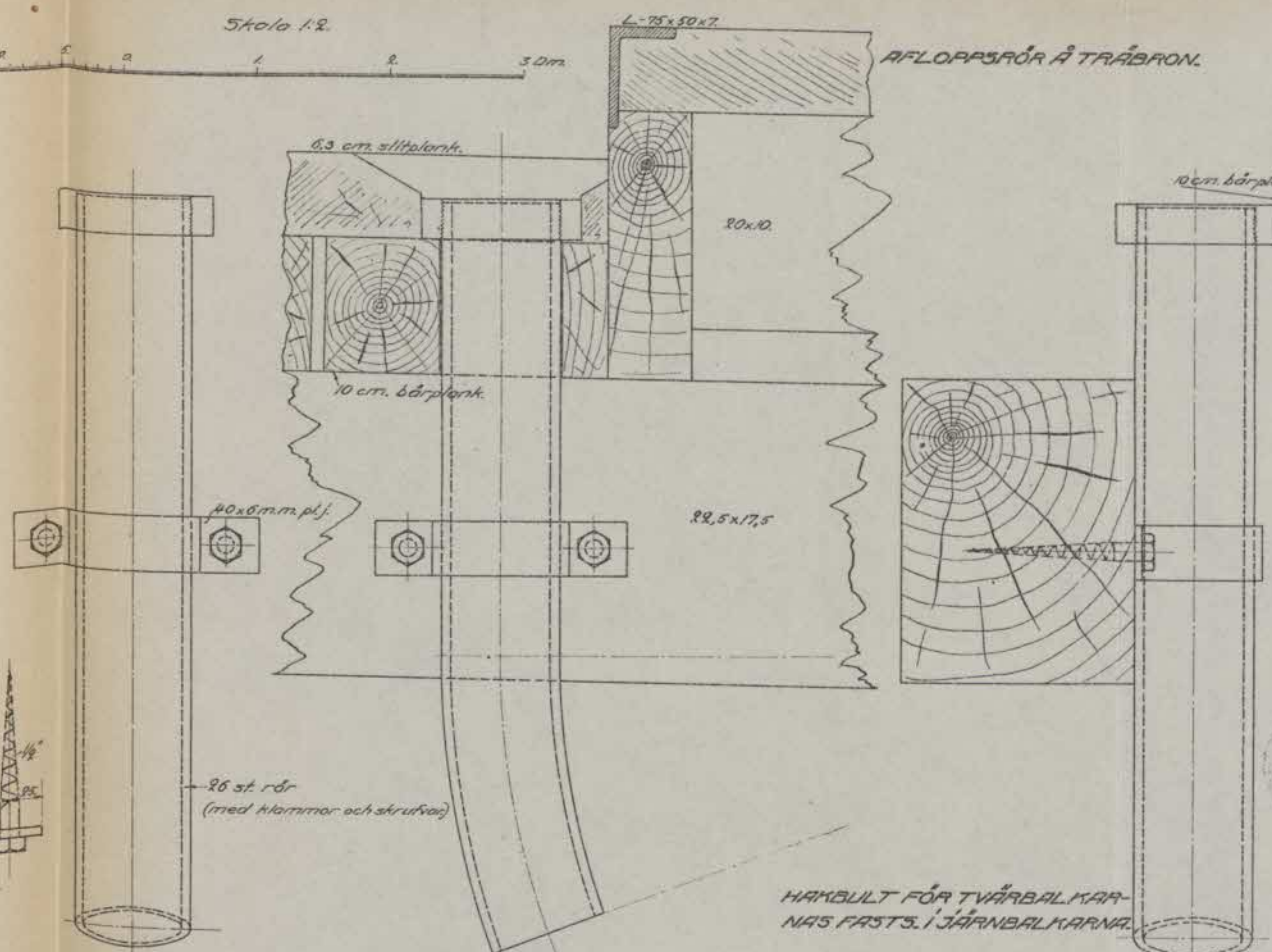


AFLOPPSRÖR Å SVÄNGBRON.

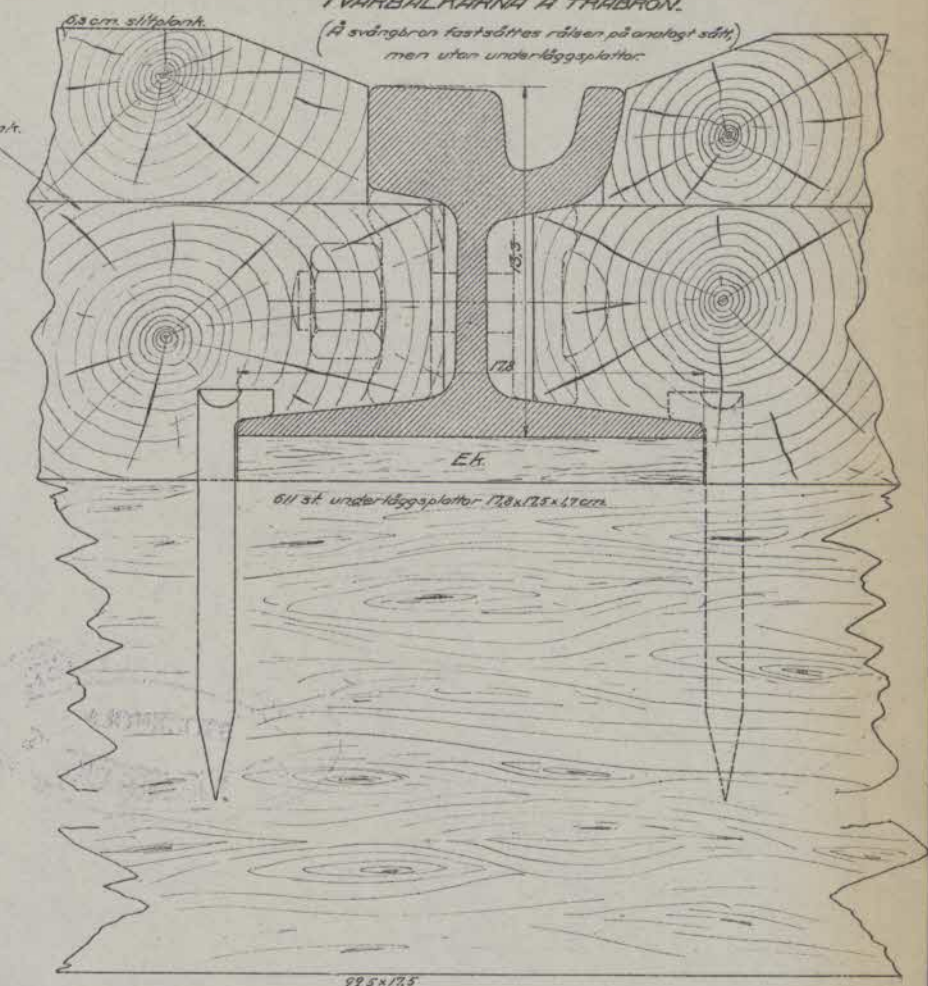


Skala 1:2

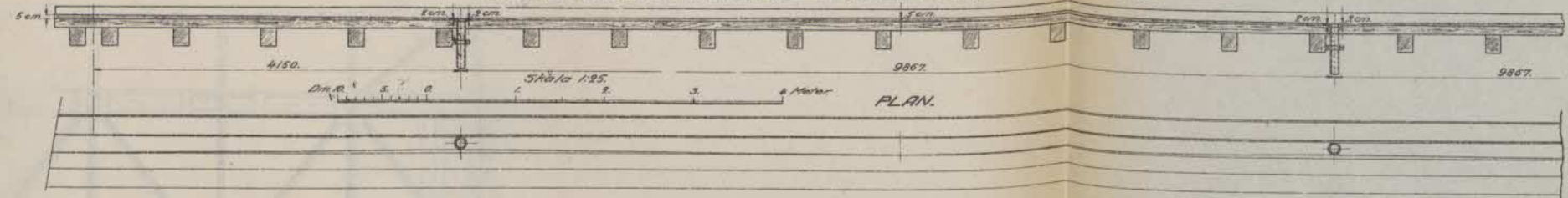
AFLOPPSRÖR Å TRÅBRON.



DETALJ Å RÅLSENS FASTSÄTTNING VID TVÄRBALKARNA Å TRÅBRON.

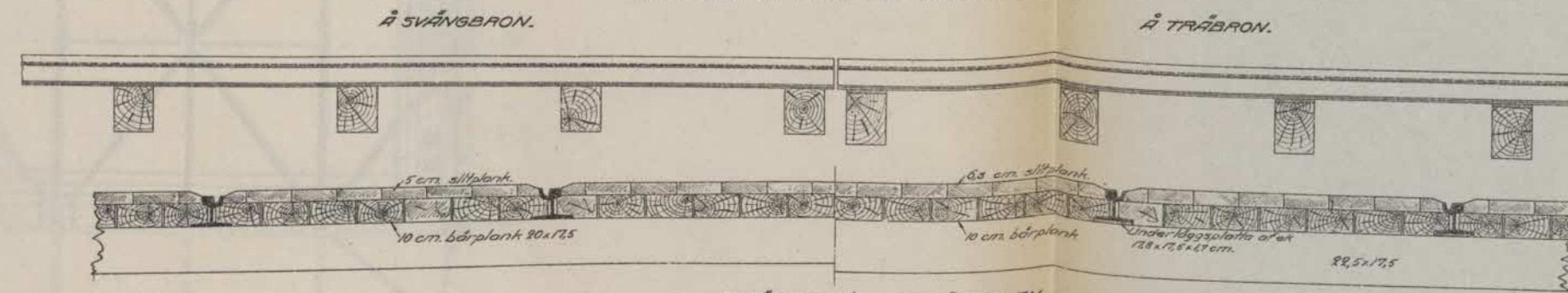


LÄNGDSEKTION AF KÖRBANAN VID AFLOPPSRÖREN Å SVÄNGBRON.



PLAN.

LÄNGDSEKTION AF KÖRBANAN VID RÅLSEN Å TRÅBRON.



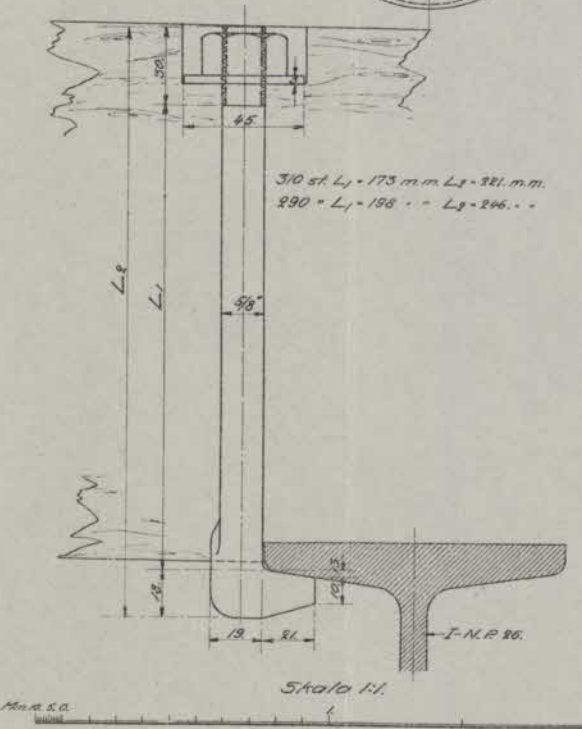
Å SVÄNGBRON

Skala 1:25

Å TRÅBRON

TVÄRSEKTION AF KÖRBANAN

HÅNBULT FÖR TVÄRBALKARNAS FASTS. I JÄRNBALKARNA.



310 st. L<sub>1</sub> = 173 mm. L<sub>2</sub> = 381 mm.  
290 = L<sub>1</sub> = 198 mm. L<sub>2</sub> = 246 mm.

Skala 1:1

LILJEHOLMSBRON.

PROVISORISK GATUBRO

ÖFVER

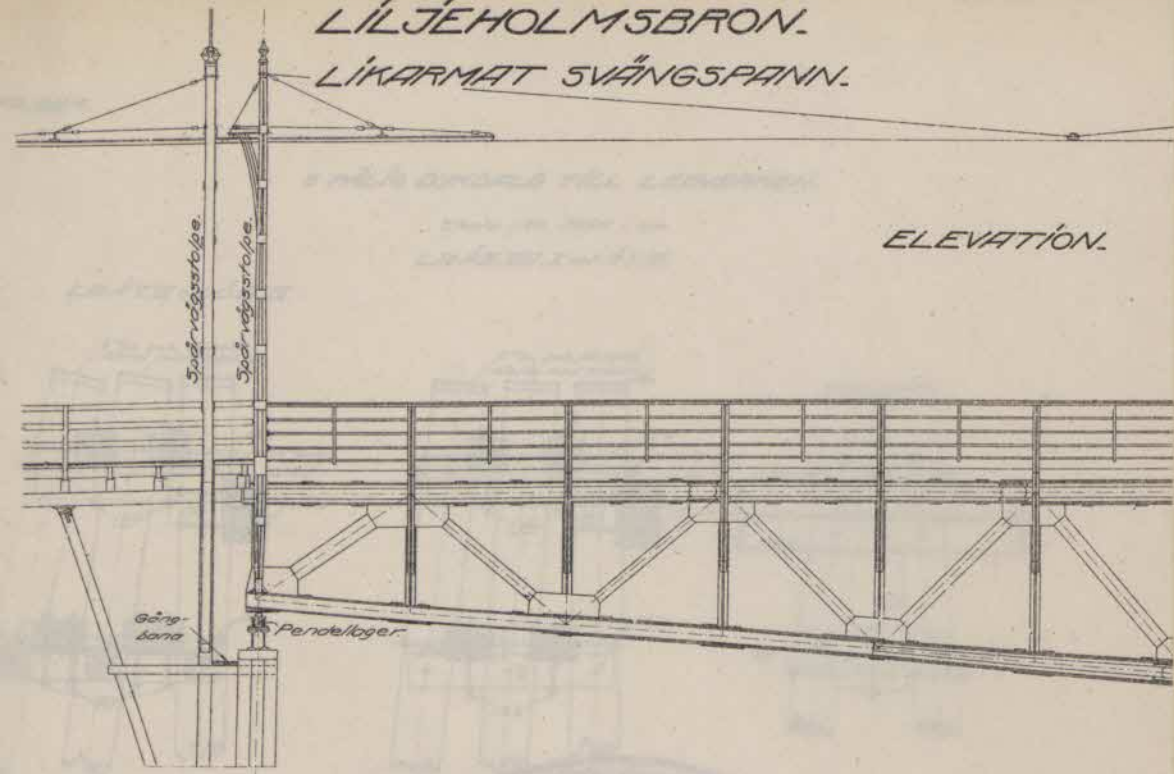
LILJEHOLMSVIKEN.

Skala 1:1, 1:2, 1:10, 1:25.

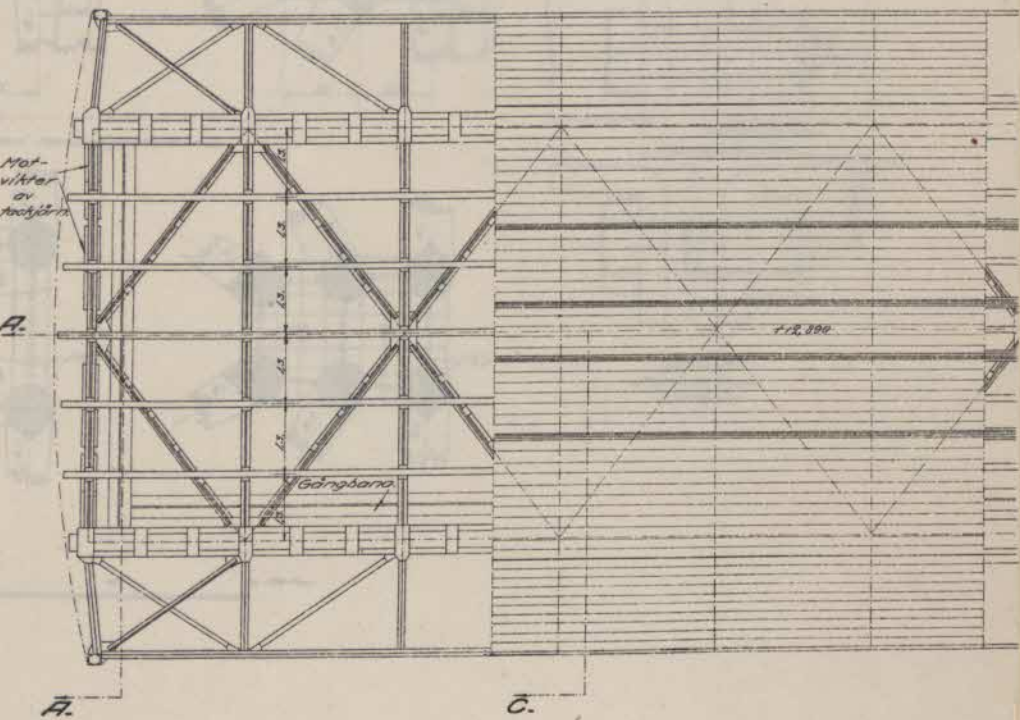


LILJEHOLMSBRON.  
LIKARMAT SVÄNGSPANN.

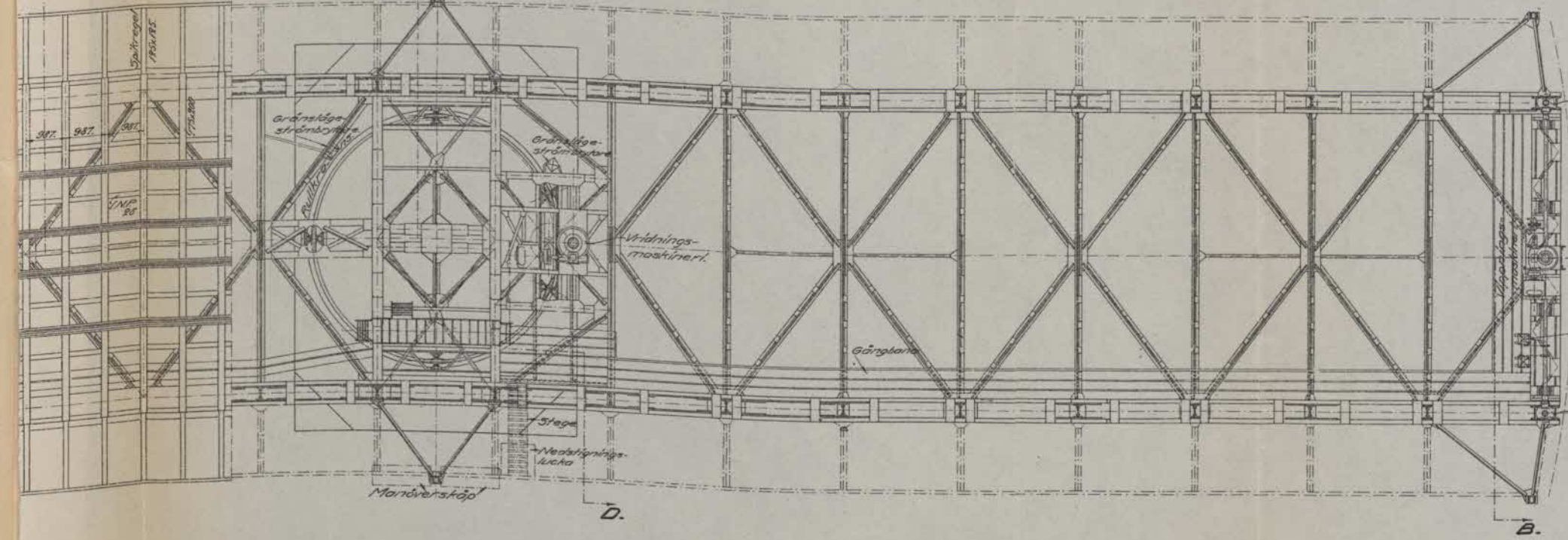
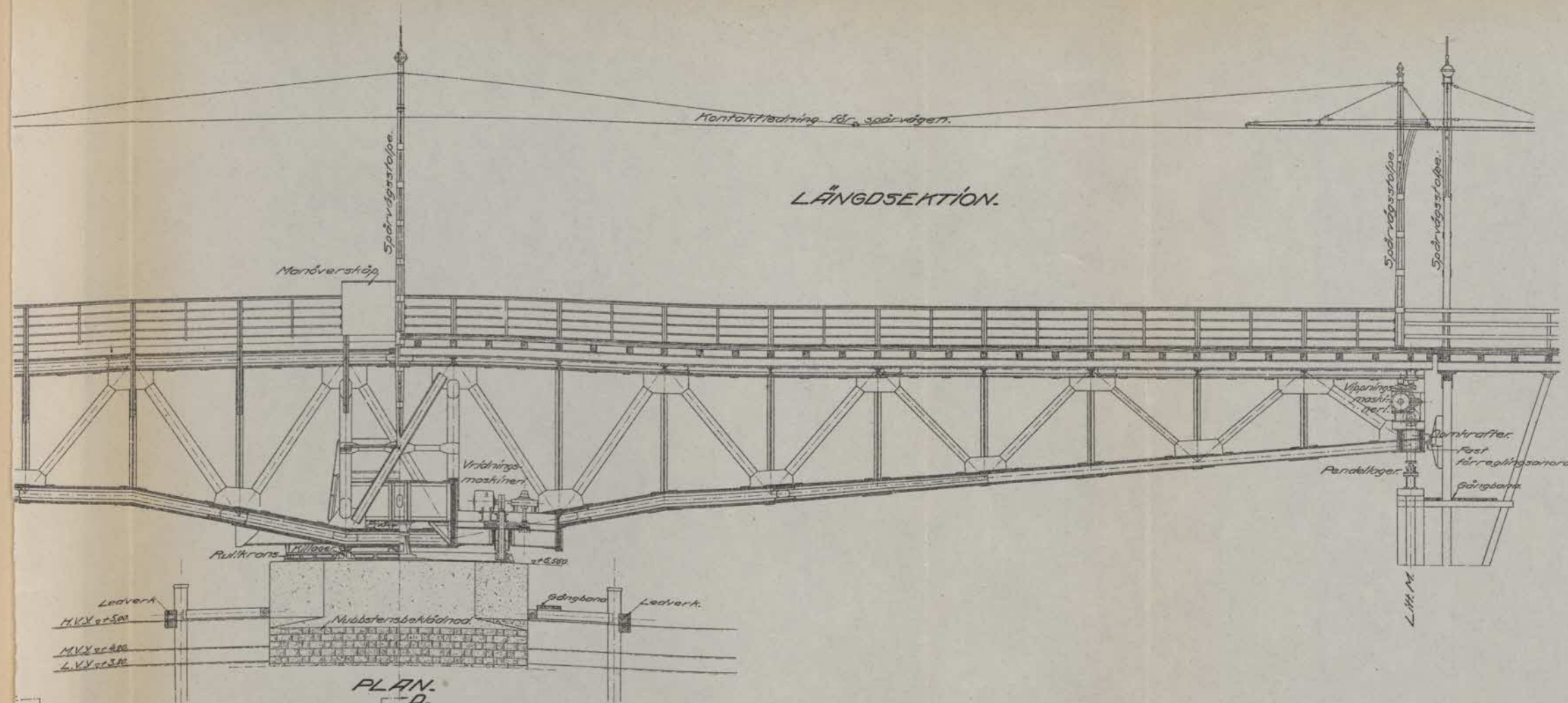
ELEVATION.



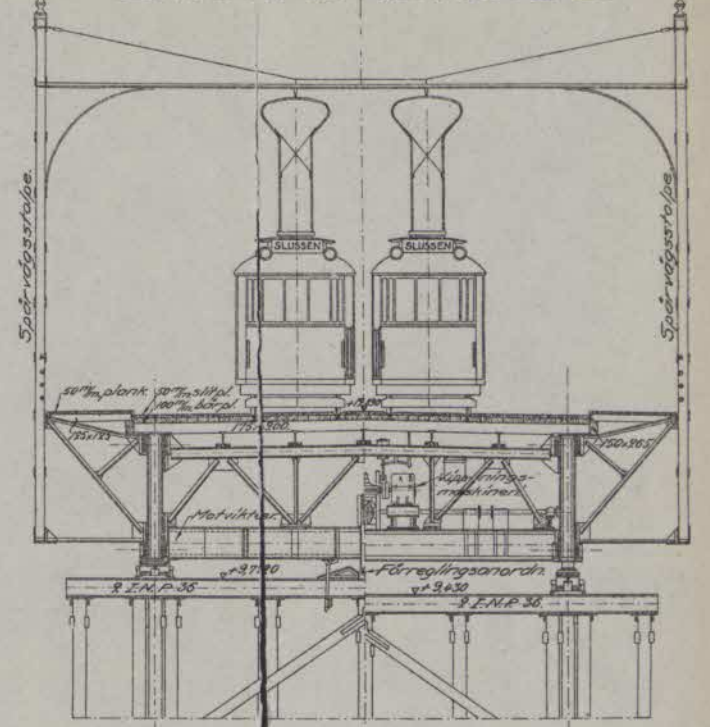
Skala 1:50  
0 1 2 3 4 5 6 7 8 9 10 Meter



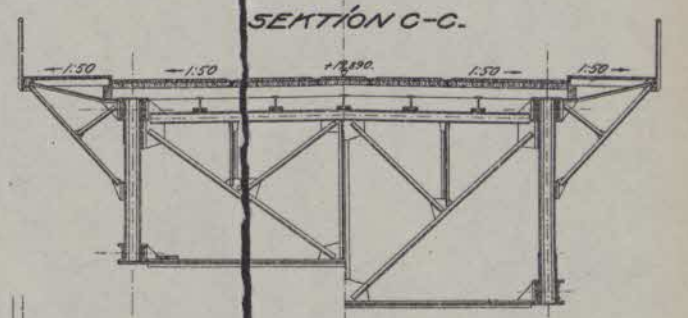
LÅNGDSEKTION.



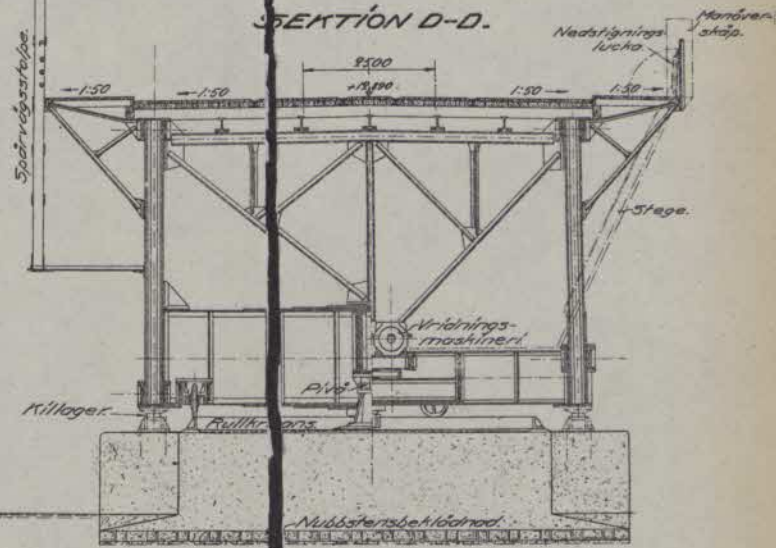
SEKTION A-A. SEKTION B-B.



SEKTION C-C.

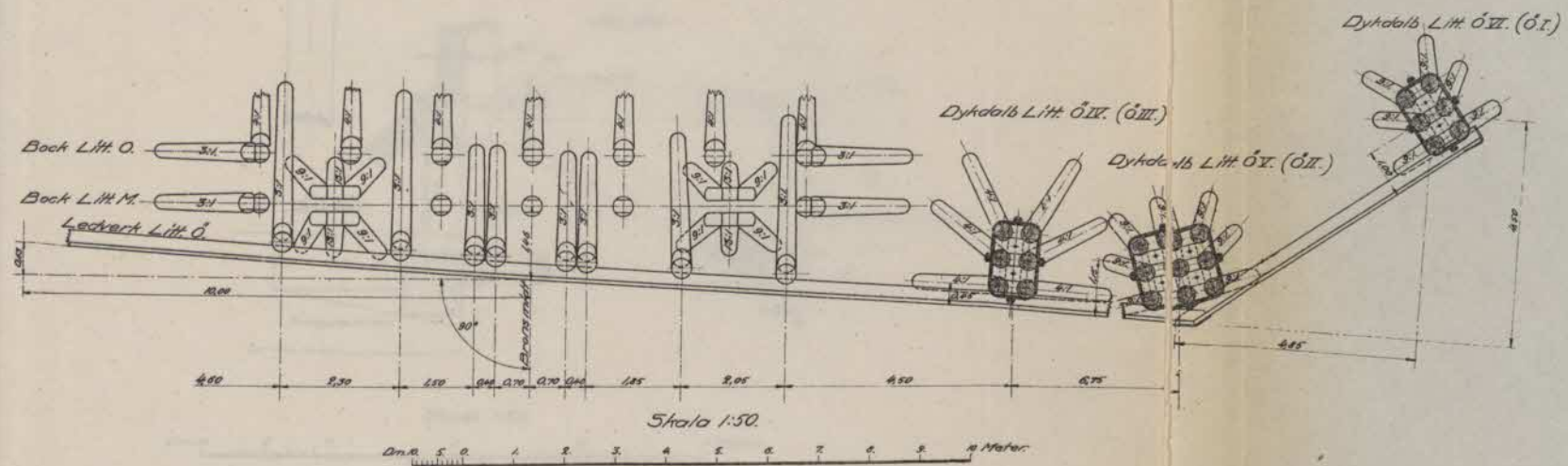
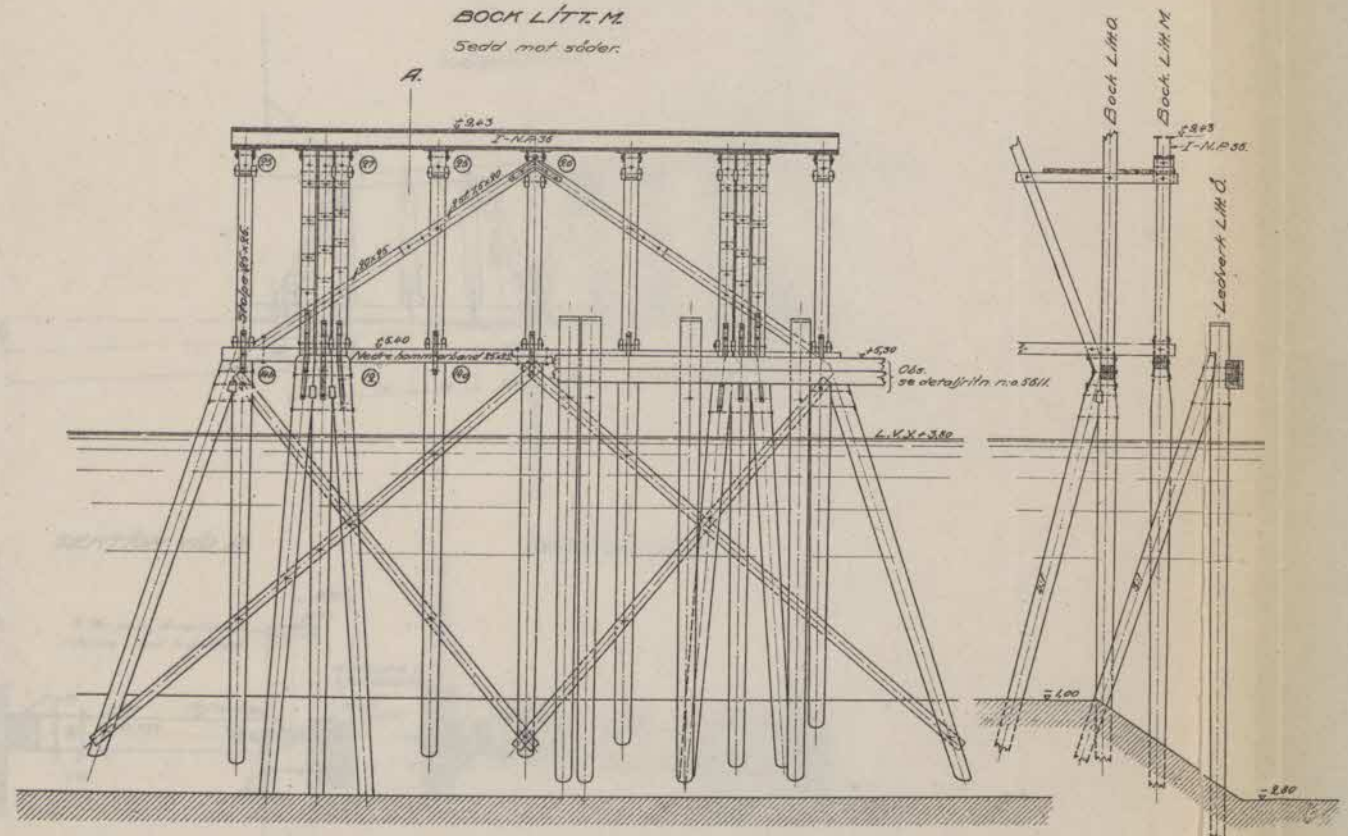


SEKTION D-D.



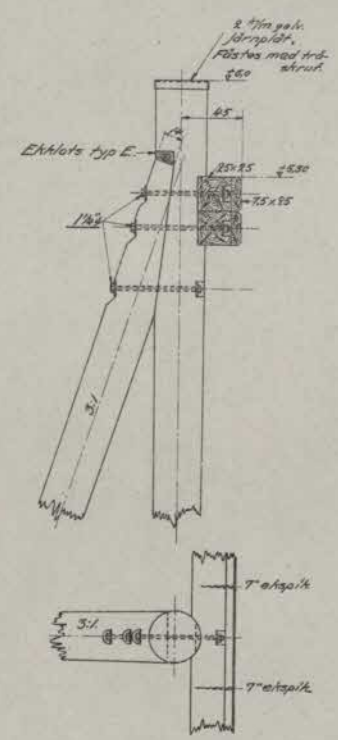


SEKTION VID A.



DETALJ AF BOCK TILL LEDVERKEN.

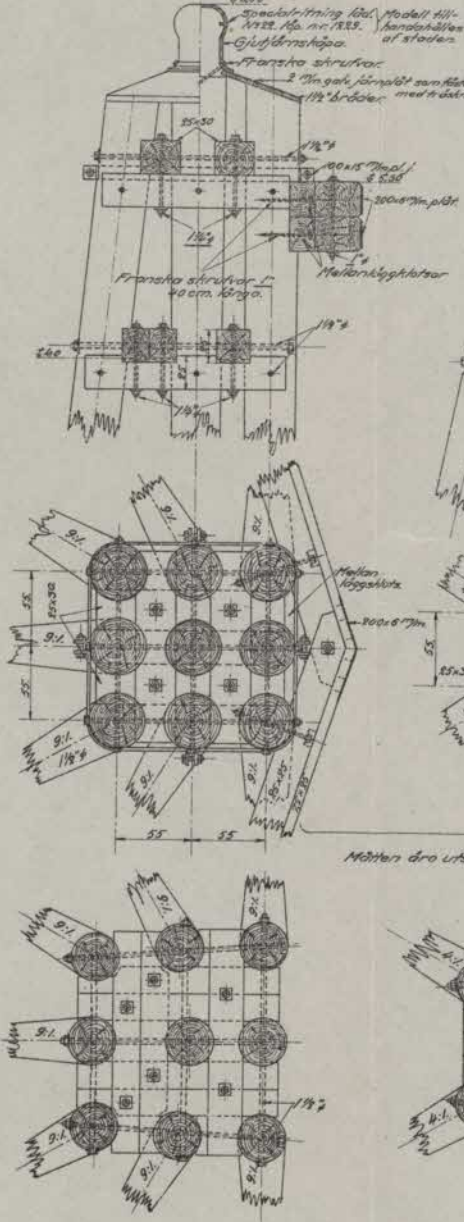
Skala 1:80. Mått i cm.



9 PÄLIG DYKDALB TILL LEDVERKEN.

Skala 1:80. Mått i cm.

Litt. A.II, III, VIII, IX och Ö.II, V.

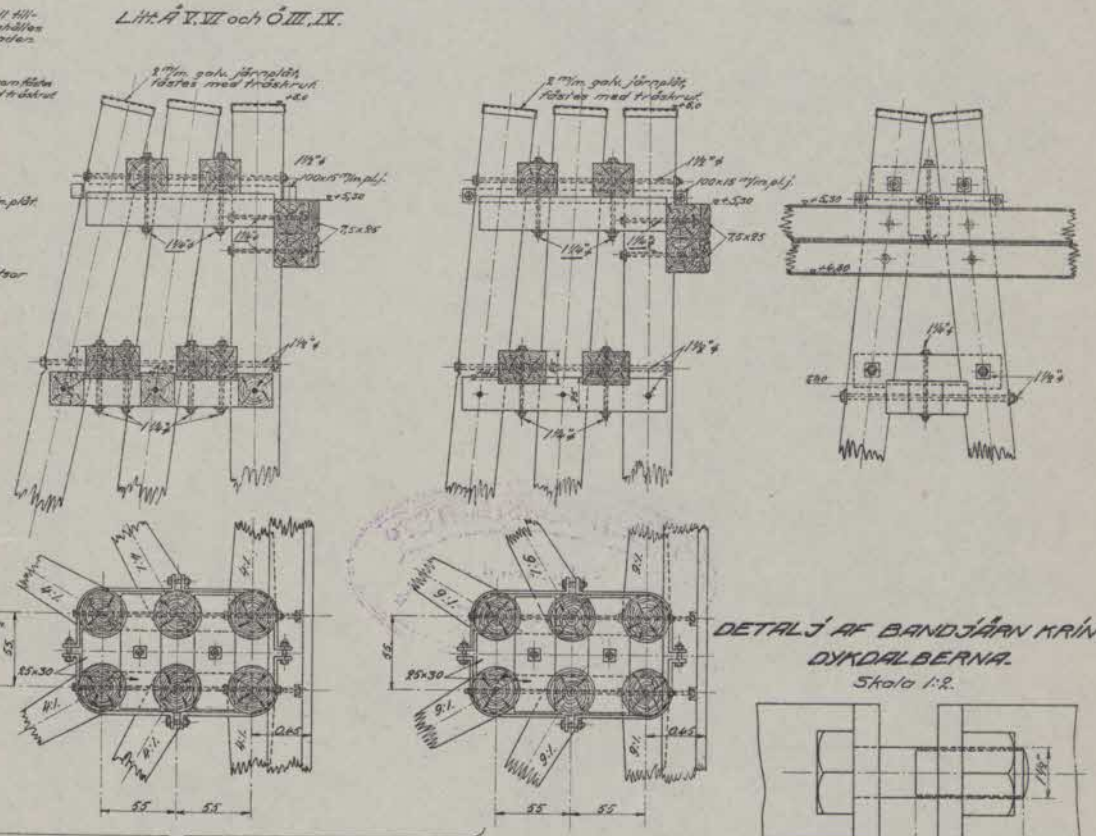


Skala 1:10.

6 PÄLIG DYKDALB TILL LEDVERKEN.

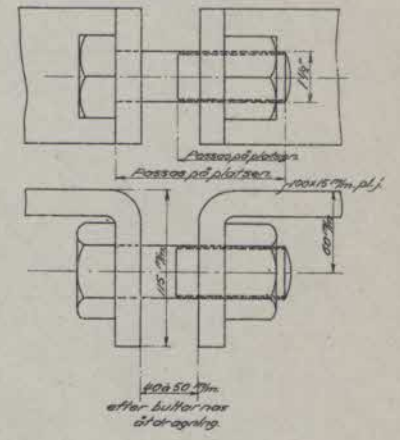
Skala 1:80. Mått i cm.

Litt. A.III, VIII, X och Ö.I, VI.



DETALJ AF BANDJÄRN KRING DYKDALBERNA.

Skala 1:2.

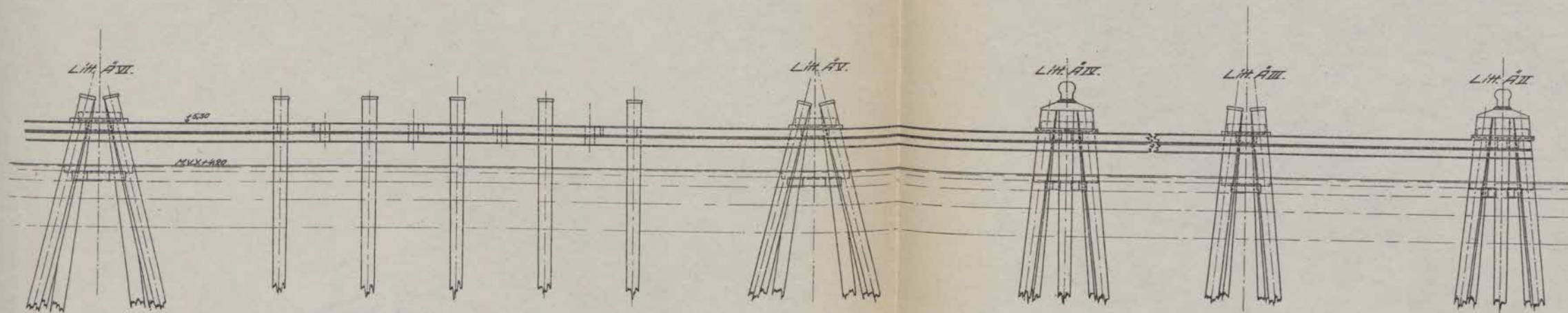


Beslägen och skultornes längd bestämmas på platsen.  
 Vridningsmomenterna i det undre förbandet bestämmas på platsen.  
 Understrukna siffror beteckna ändrad dimensioner med ritn. nr 5542.

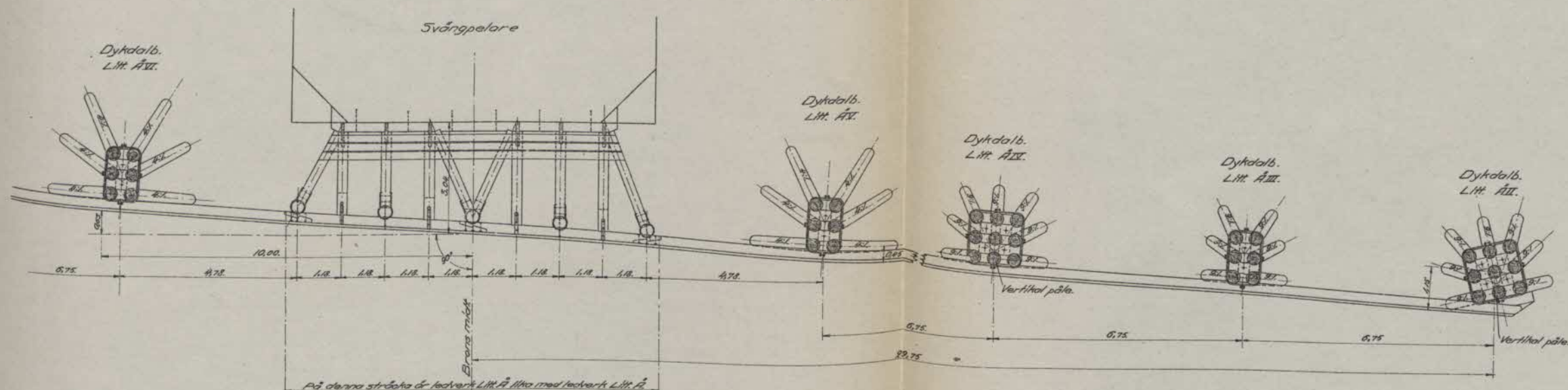


LILJEHOLMSBRON.  
LEDVERK LITT. Å.

ELEVATION.



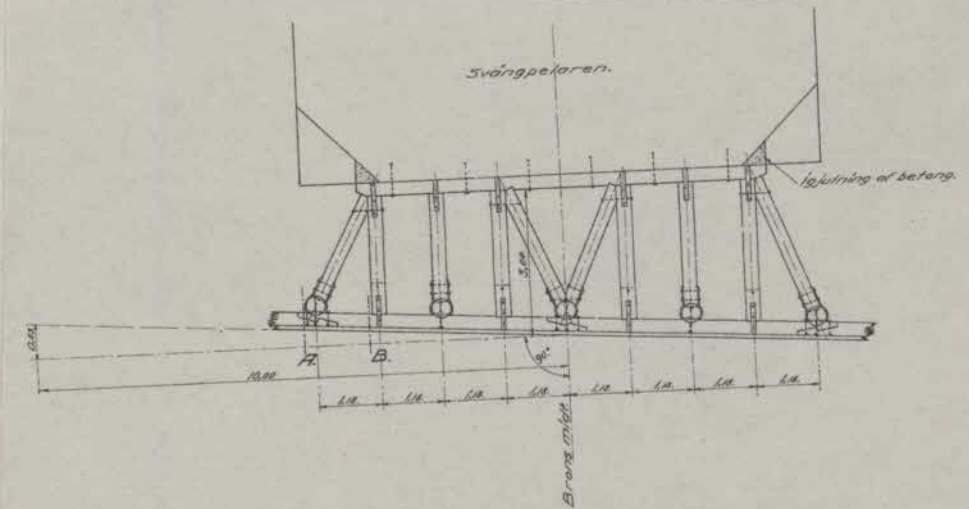
PLAN.



Skala 1:50

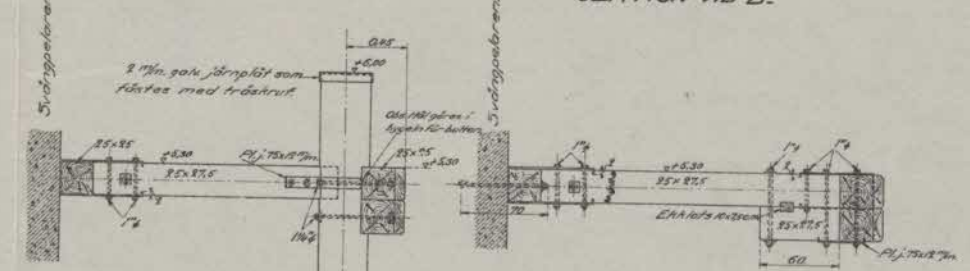
LEDVERKEN INVID SVÄNGPELAREN.

Skala 1:50

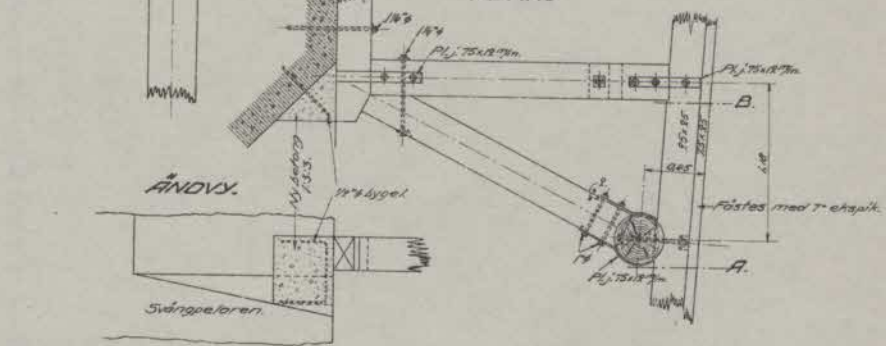


SEKTION VID A.

SEKTION VID B.



PLAN.



Skala 1:20





CENTRALTRYCKERIET  
STOCKHOLM  
1915