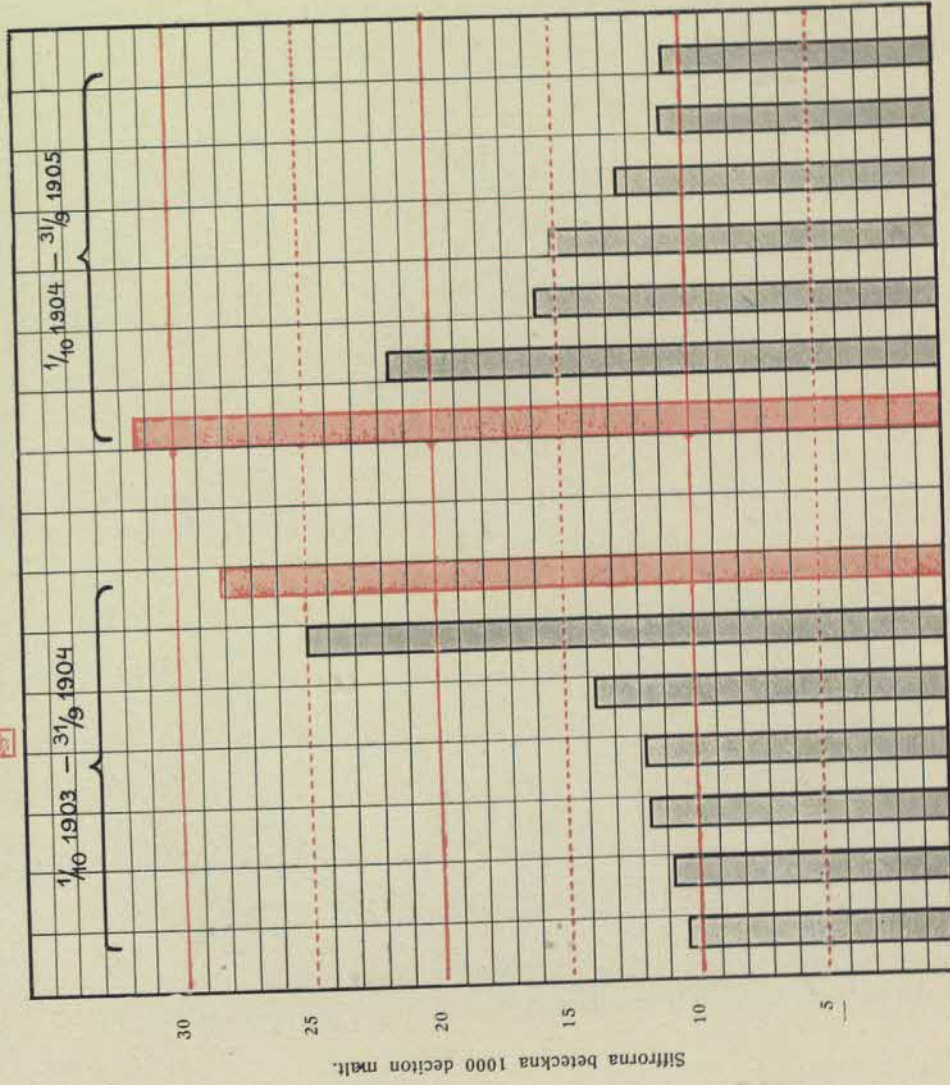


GRAFISK TABELL ÖF-  
VER OMSÄTTNINGEN  
DE SISTA 38 ÅREN.

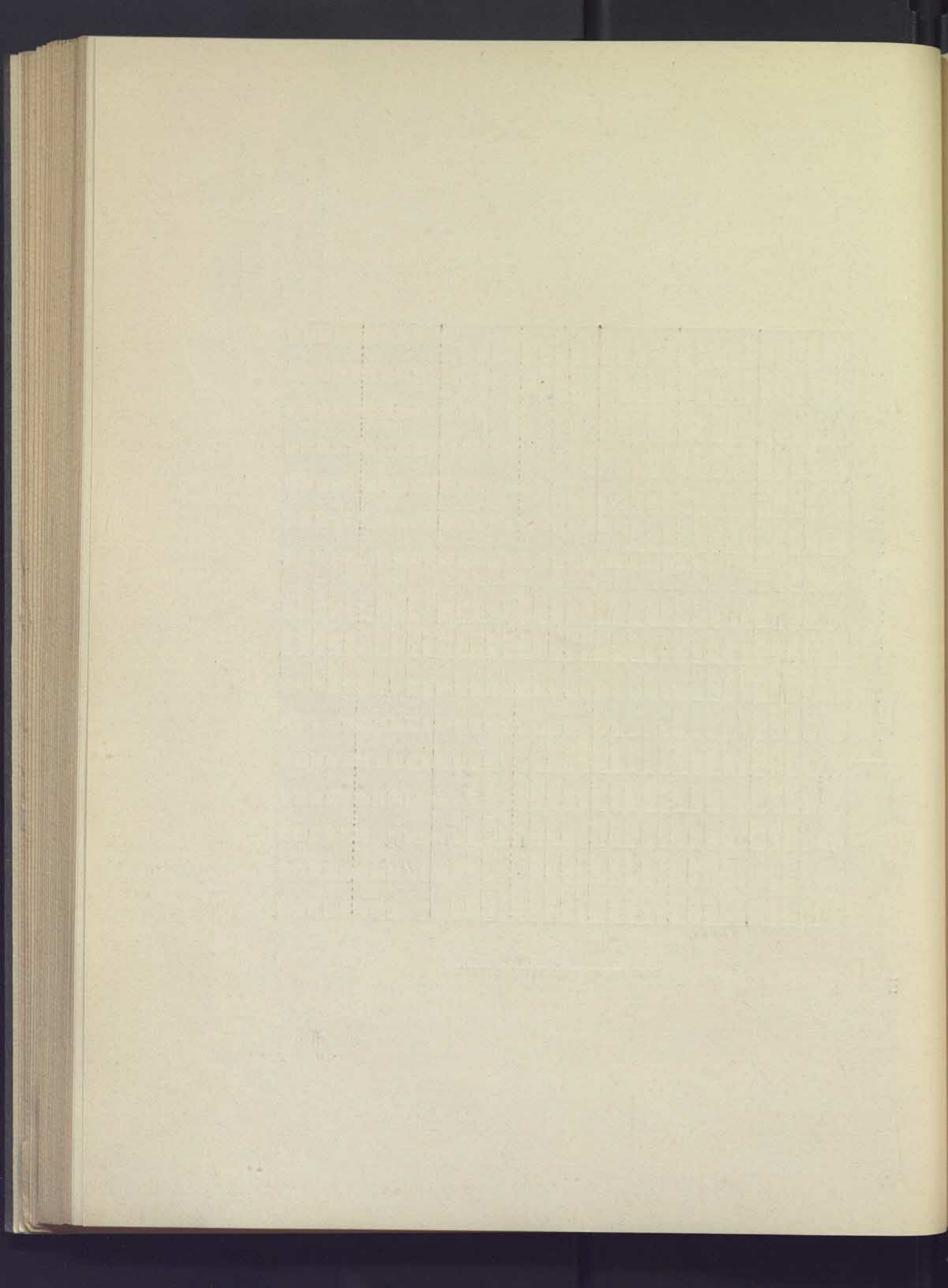


Münchens Bryggeri-Aktiebolags mältnförbrukning.

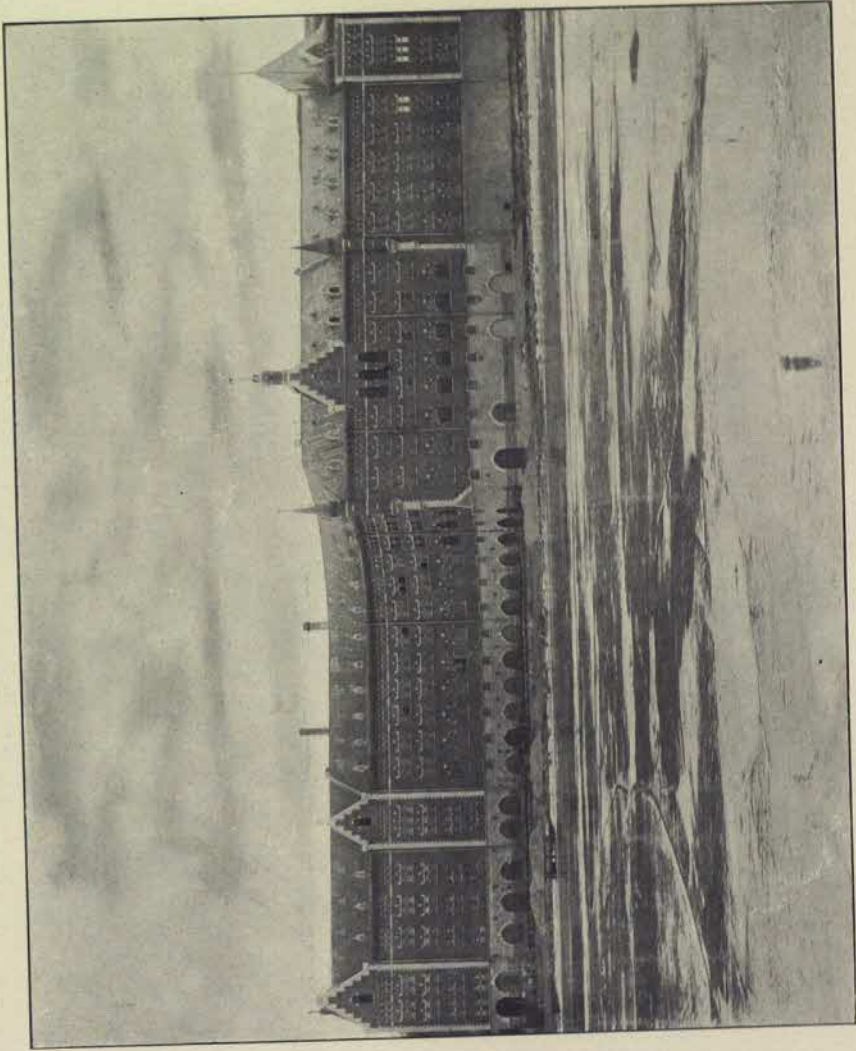


GRAFISK TABELL ÖFVER  
MÄLTFÖRBRUKNINGEN  
VID SVERIGES 7 STÖRSTA  
BRYGGERIER SEDAN  
MALTSKATTEN INFÖRDES.

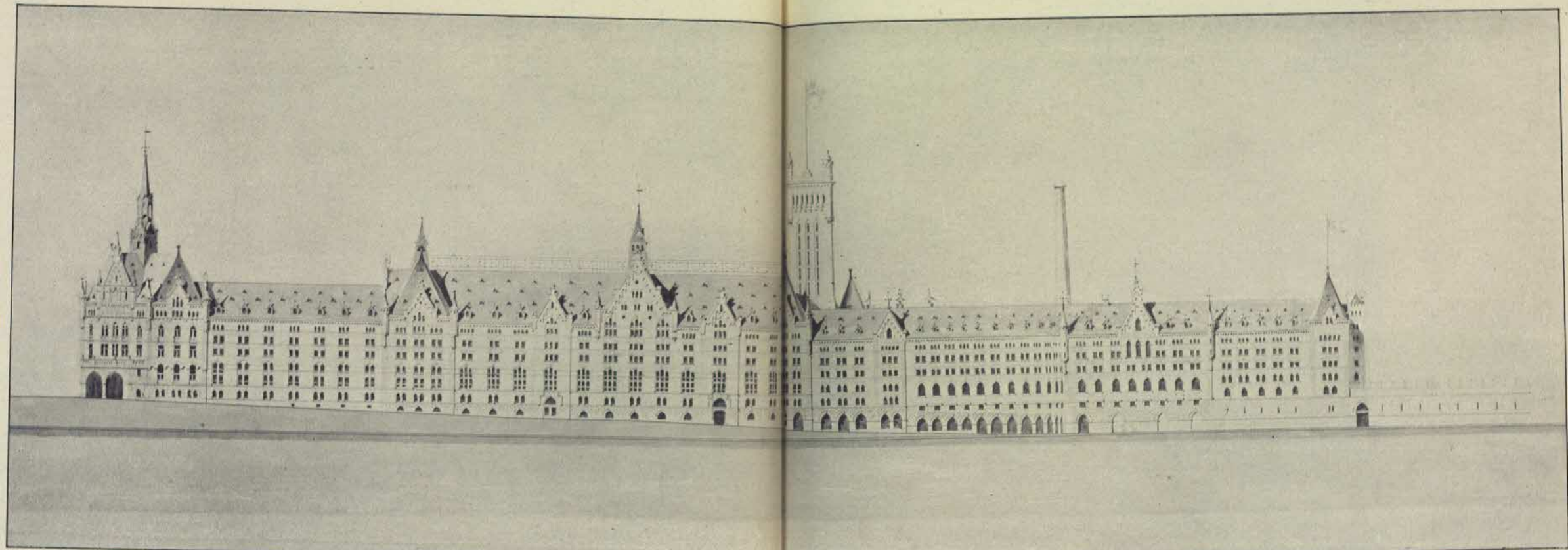




BRYGGERIETS  
FAÇAD ÄT  
SÖDER MÄLAR-  
STRAND.

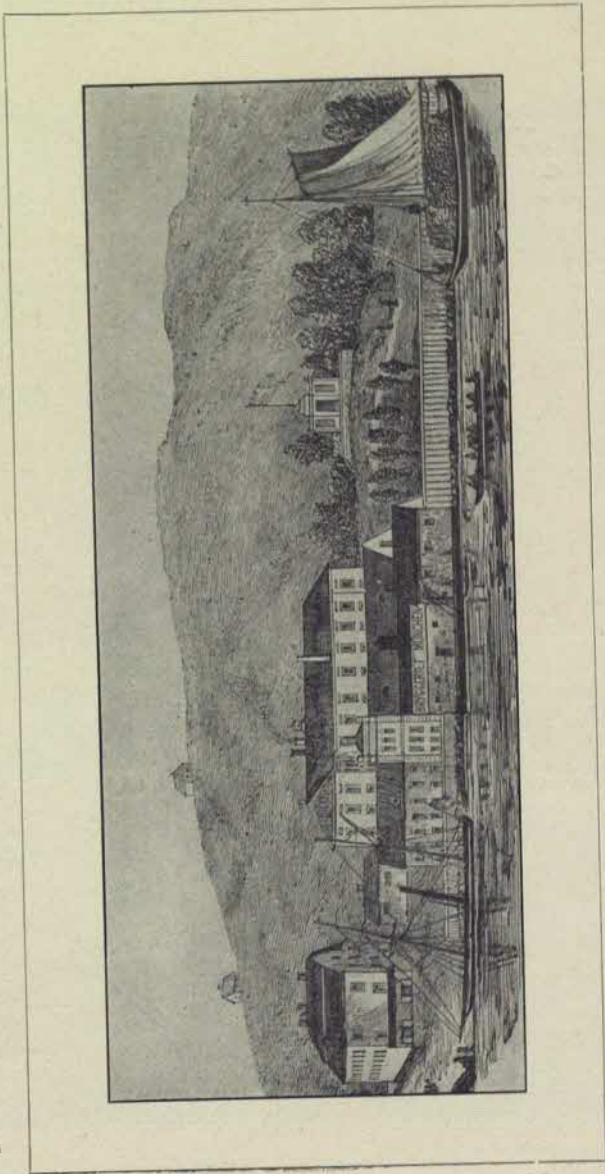




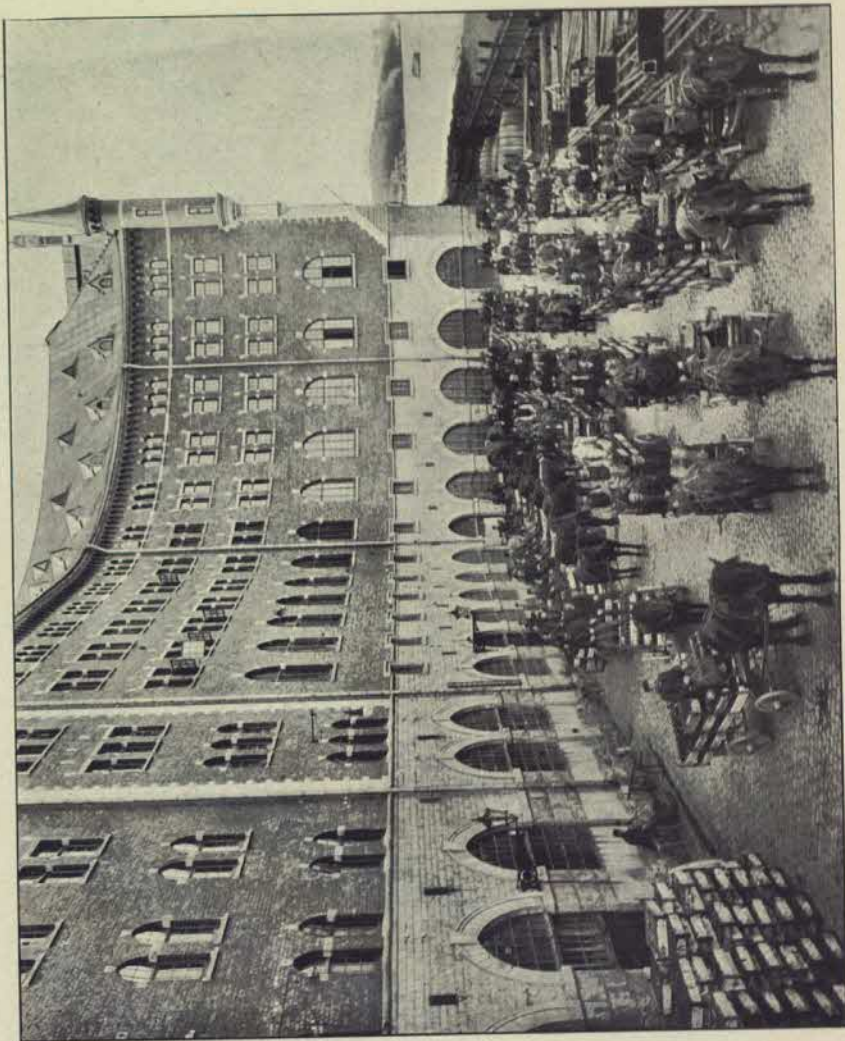


BRYGGERIETS NUVARANDE FAÇAD SAMT  
FÖRSLAG TILL BLIFVANDE TILLBYGGNAD.

MÜNCHENS  
BRYGGERI  
ÅR 1860.

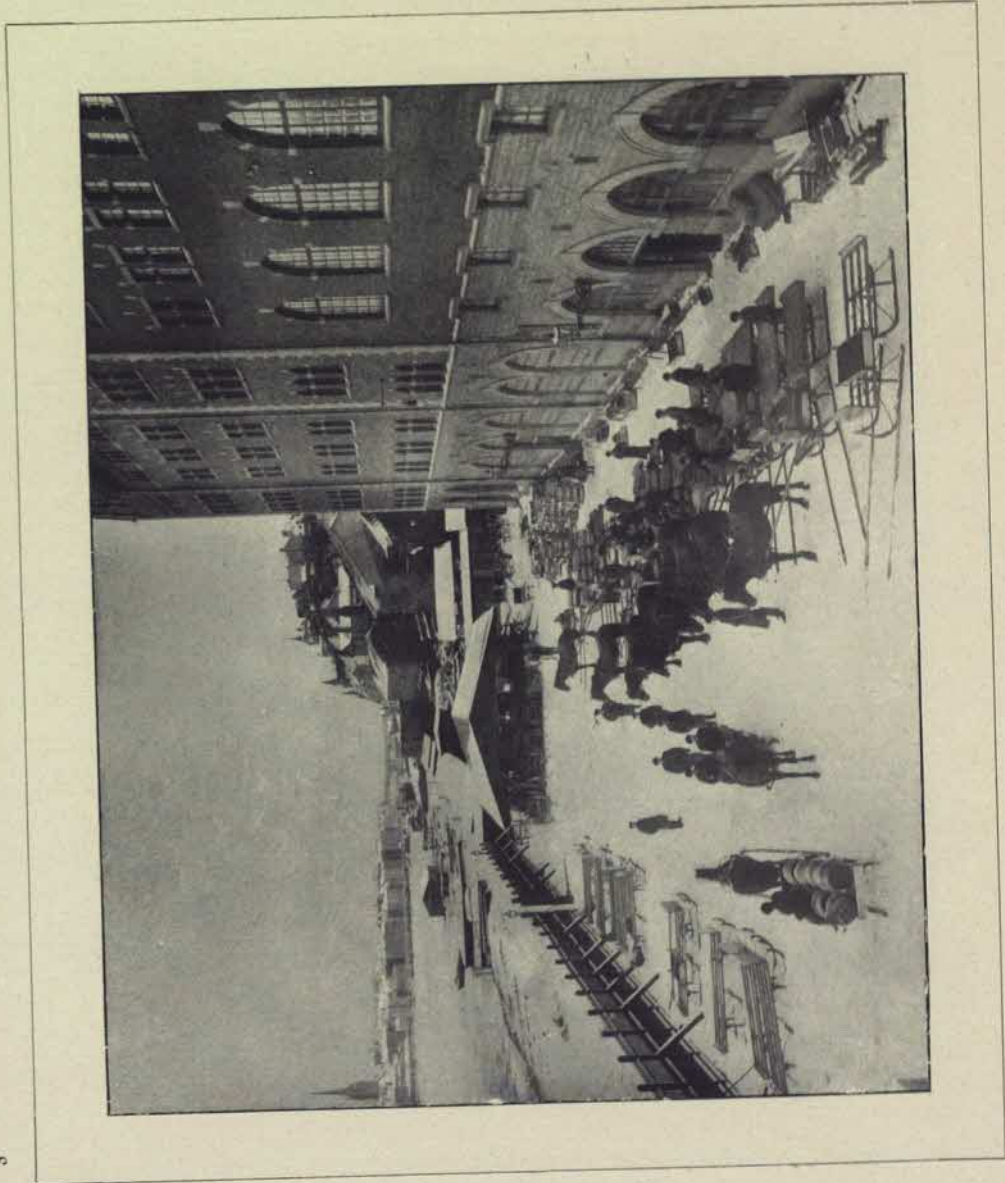




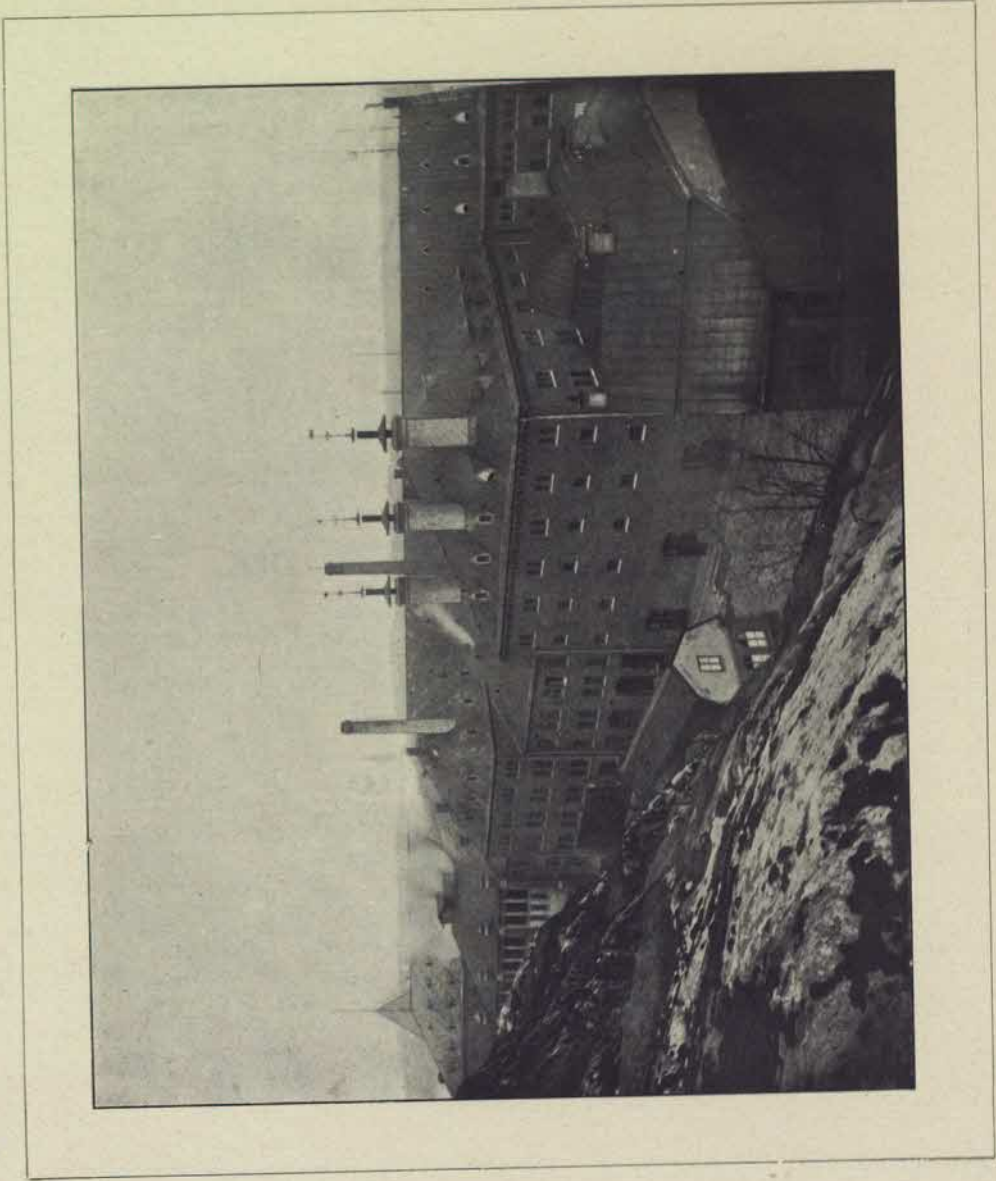


GÅRDEN MED  
ÖLUTKÖRARE.



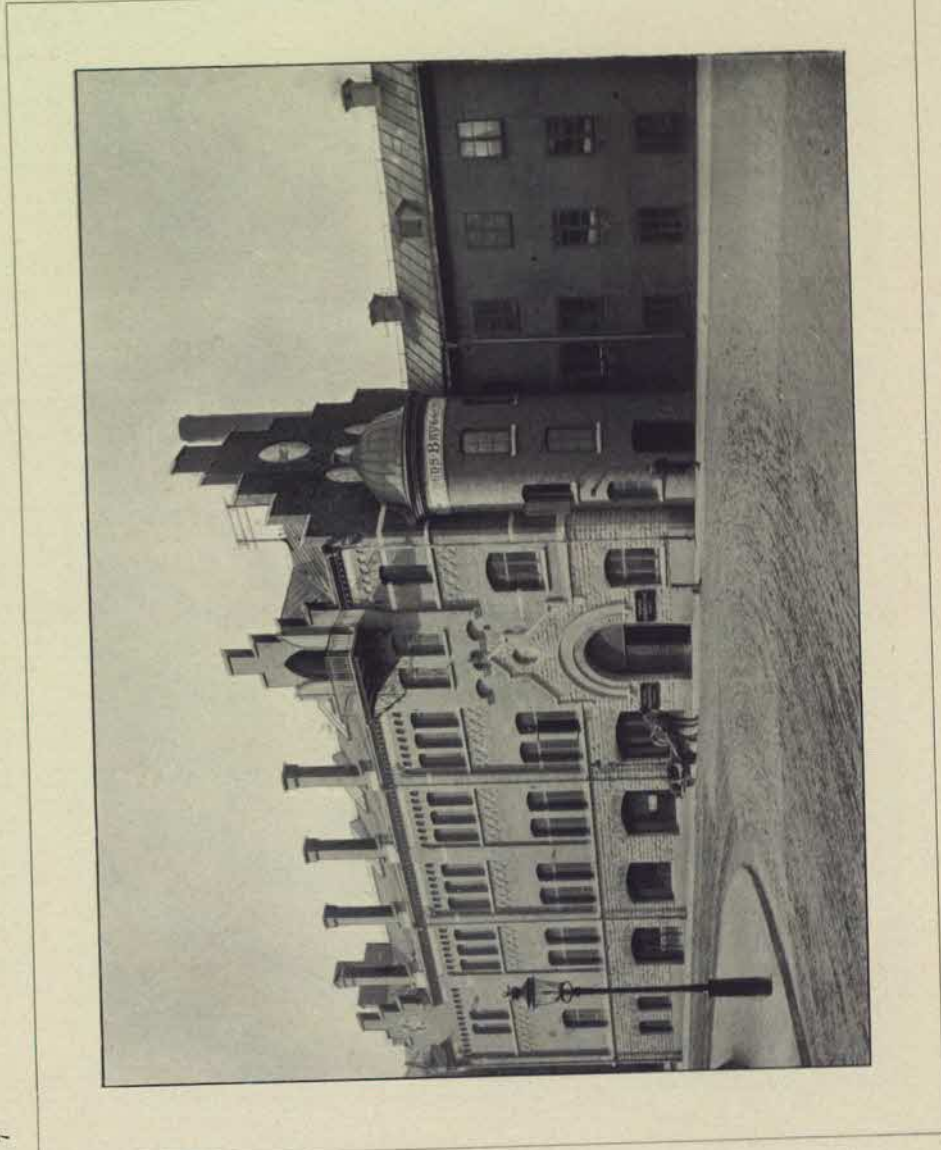


GÅRDEN MED  
ÖLUTKÖRARE  
VINTERTID.

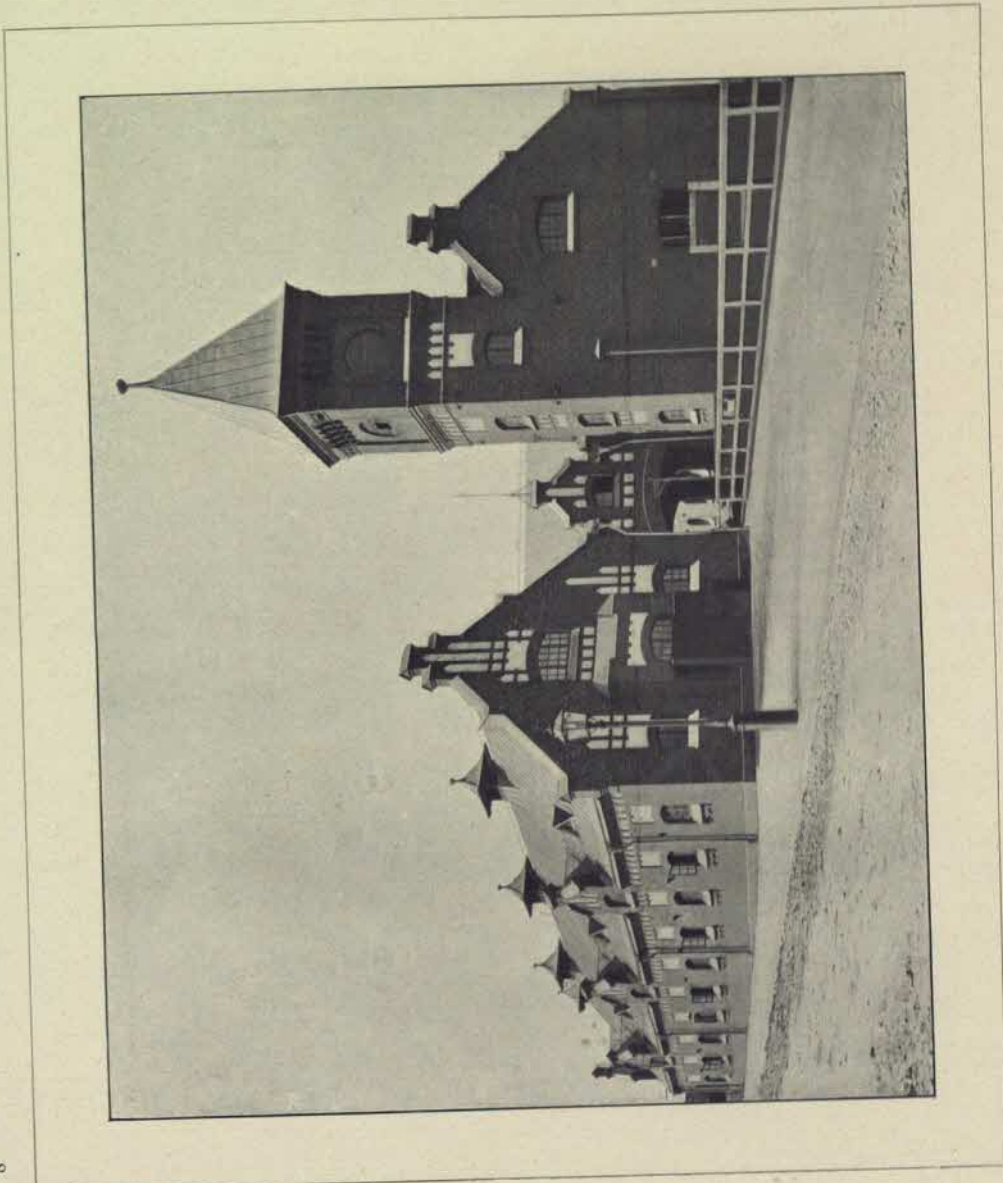


BRYGGERIETS  
FAÇAD MOT  
SÖDER.



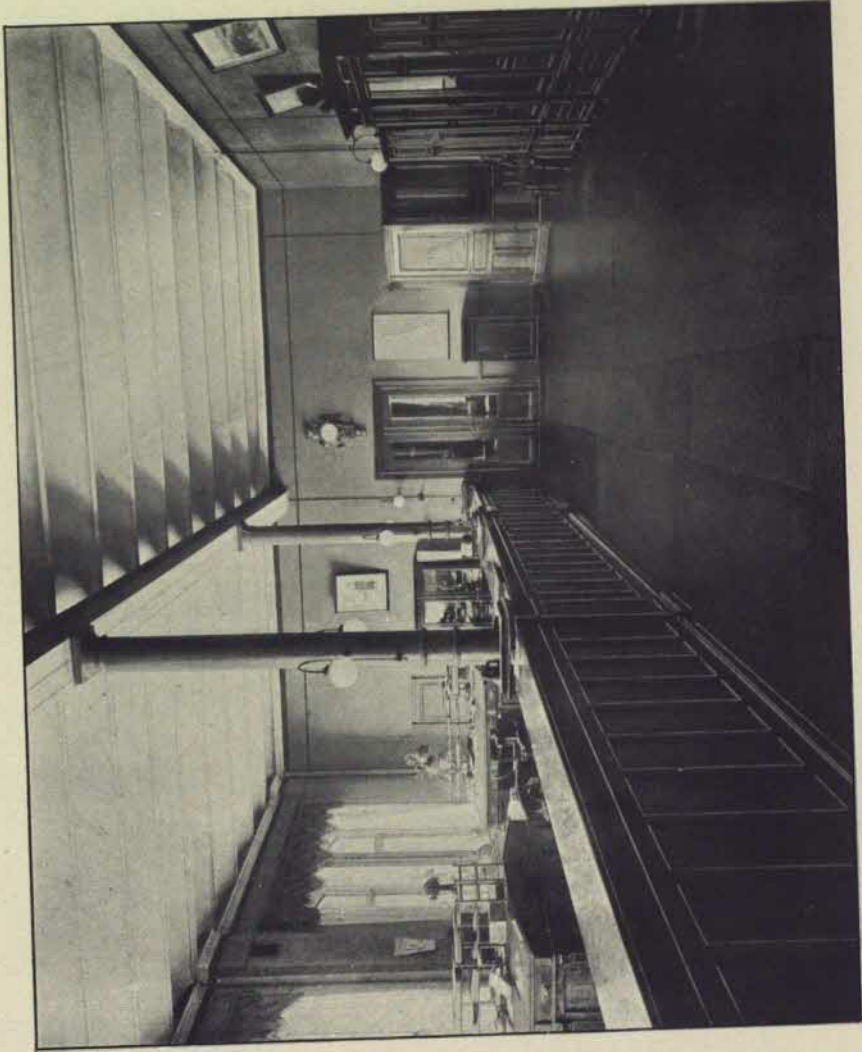


KONTORSBYGG-  
NADEN TORKEL-  
KNUTSSONS-  
GATAN 2.

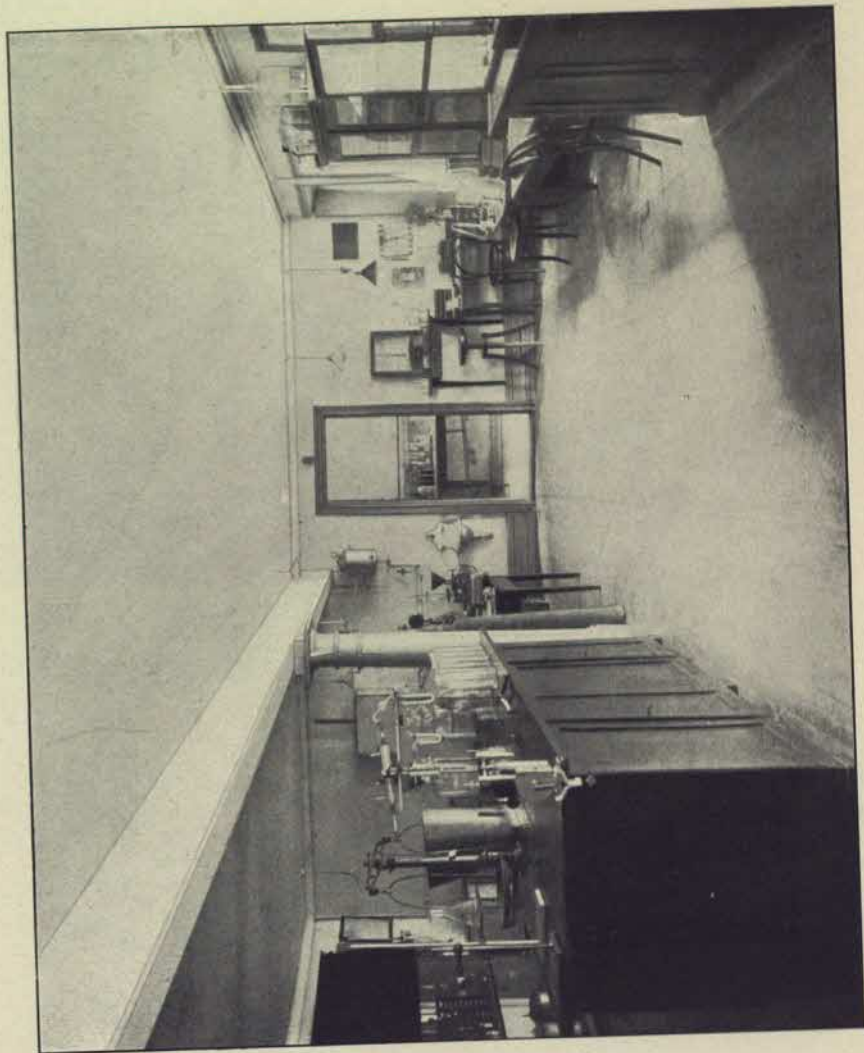


STALLARNE VID  
HÖGALIDSGATAN.



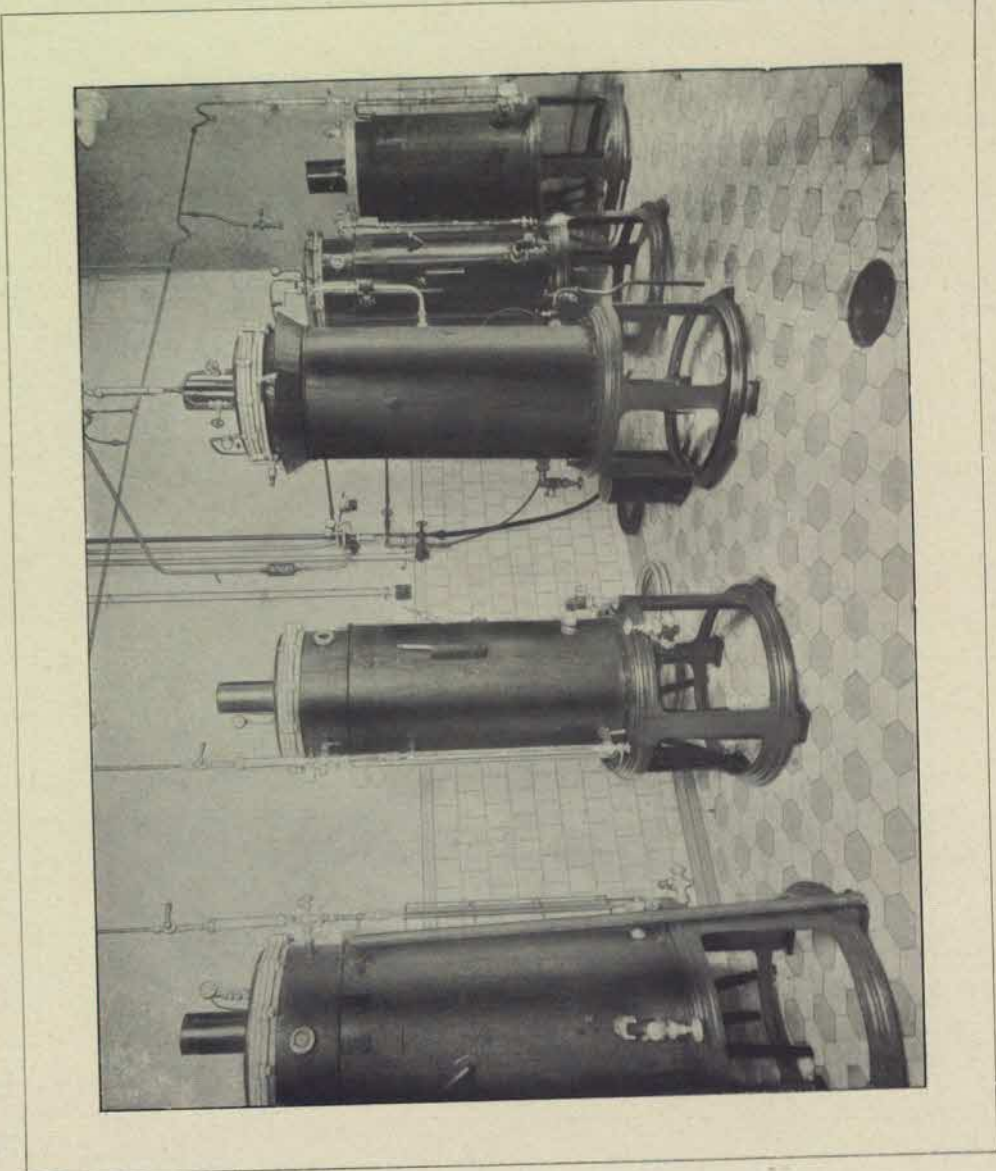


KONTORET.

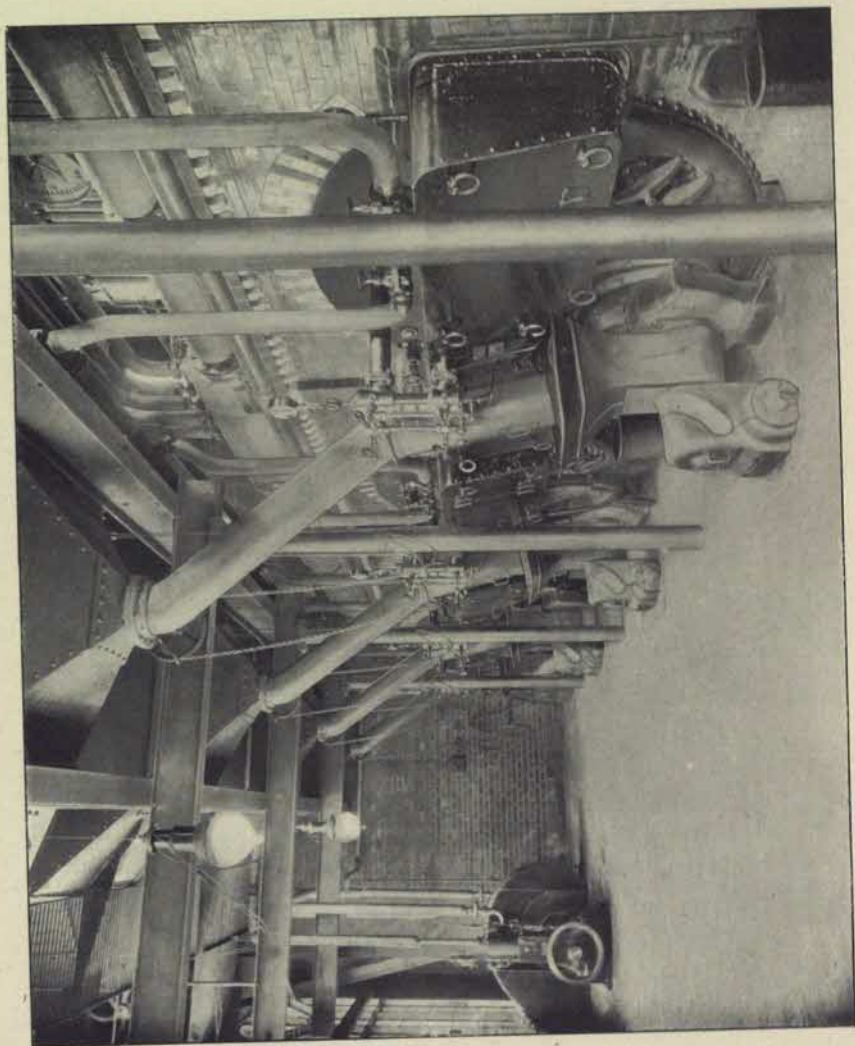


LABORATORIET.



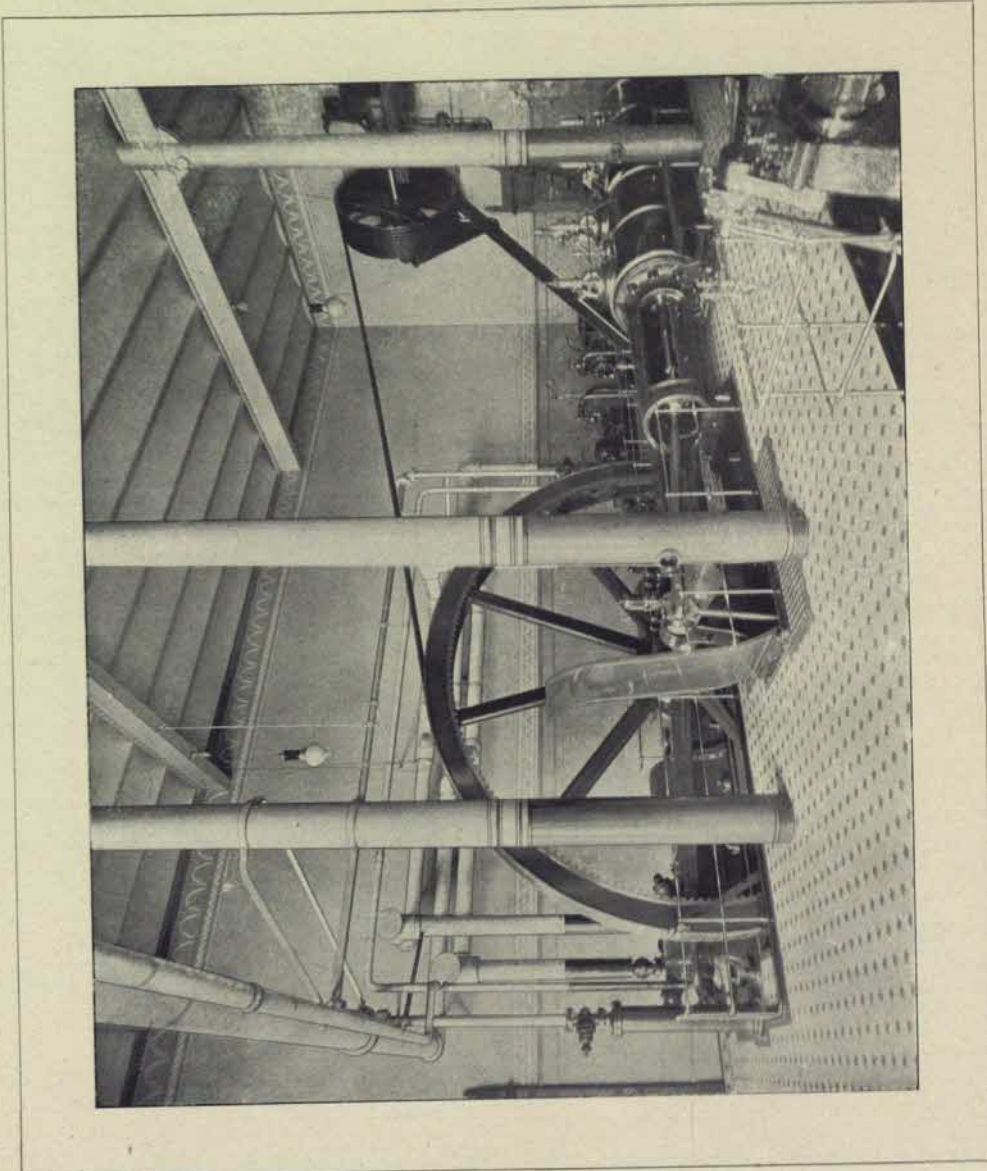


PROPAGERINGS-  
RUMMET.

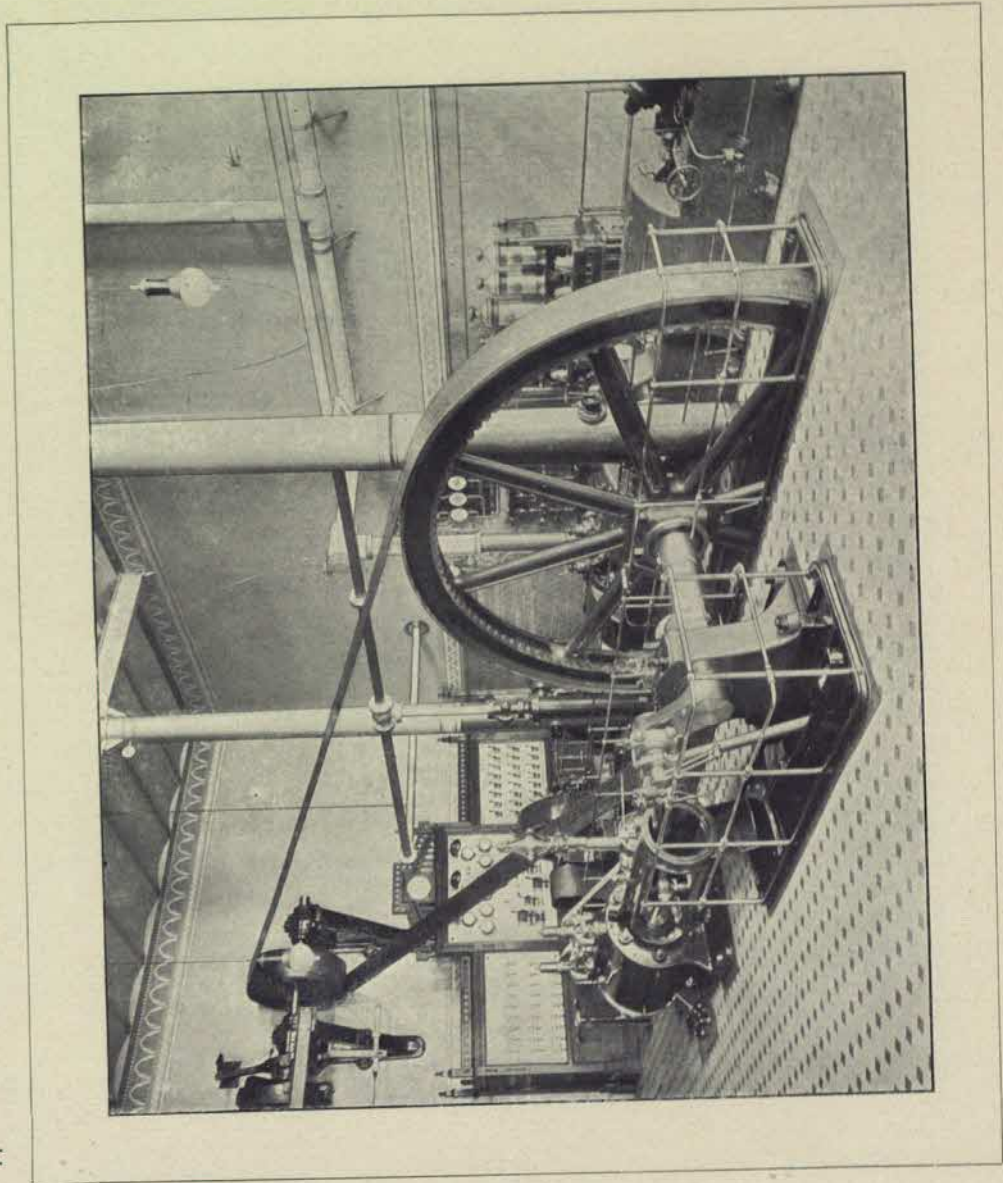


ÅNGPANNERUMMET.  
4 ÅNGPANNOR,  
HVARERA OM 80  
KV.-M. ELDYTA.



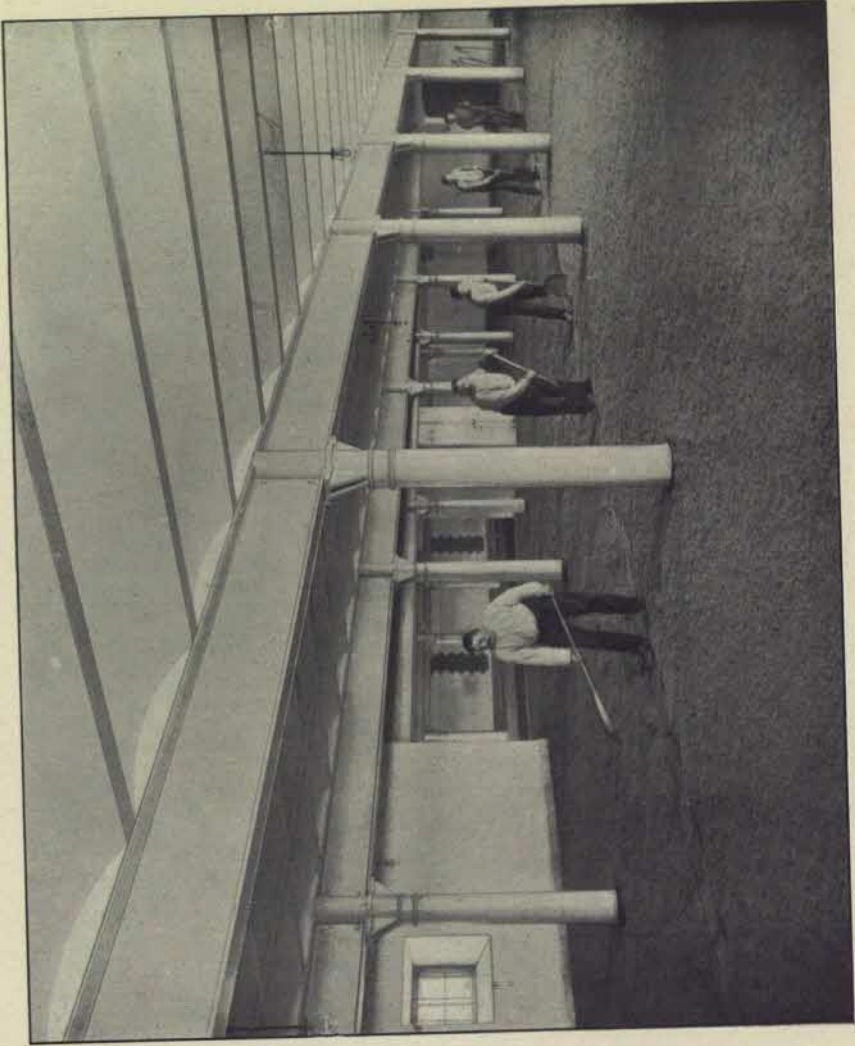


STORA MASKINEN.  
300 EFF. H.-KR.

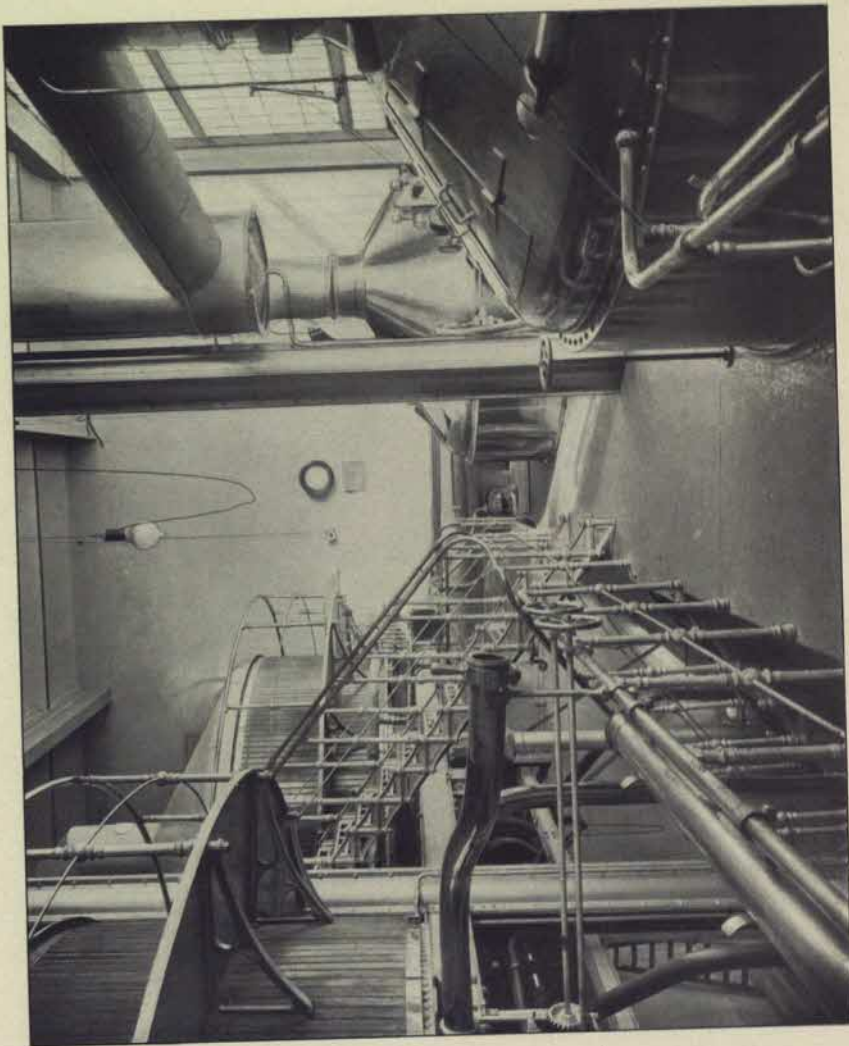


LILLA MASKINEN.  
100 EFF. H.-KR.



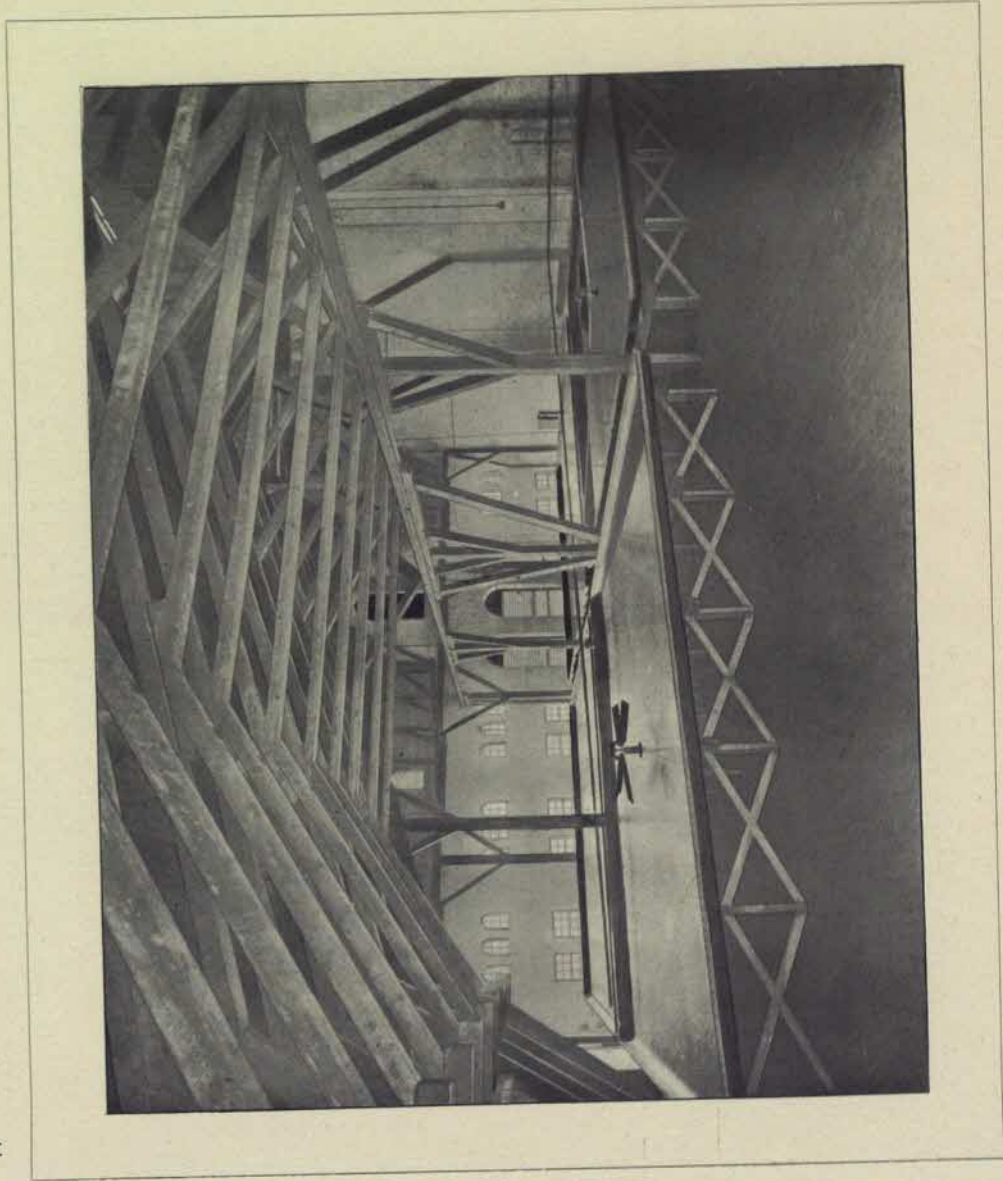


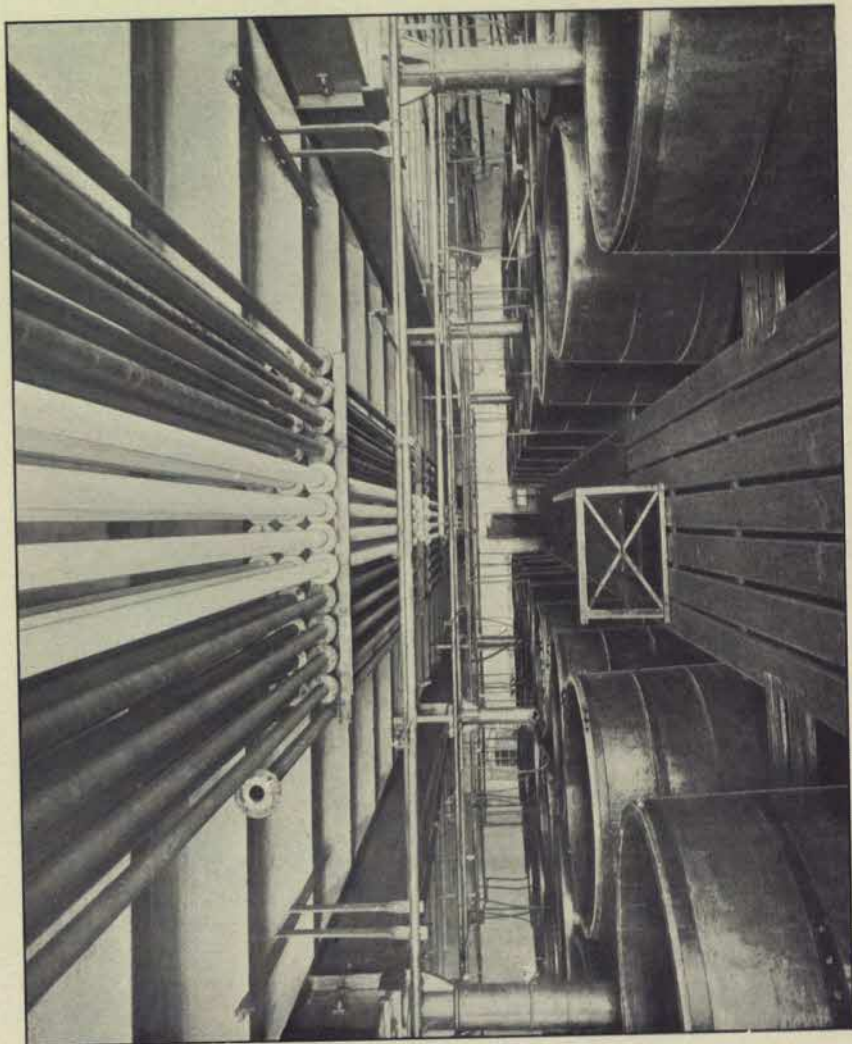
EN MALKÄLLARE.



NYA BRYGGHUSET.

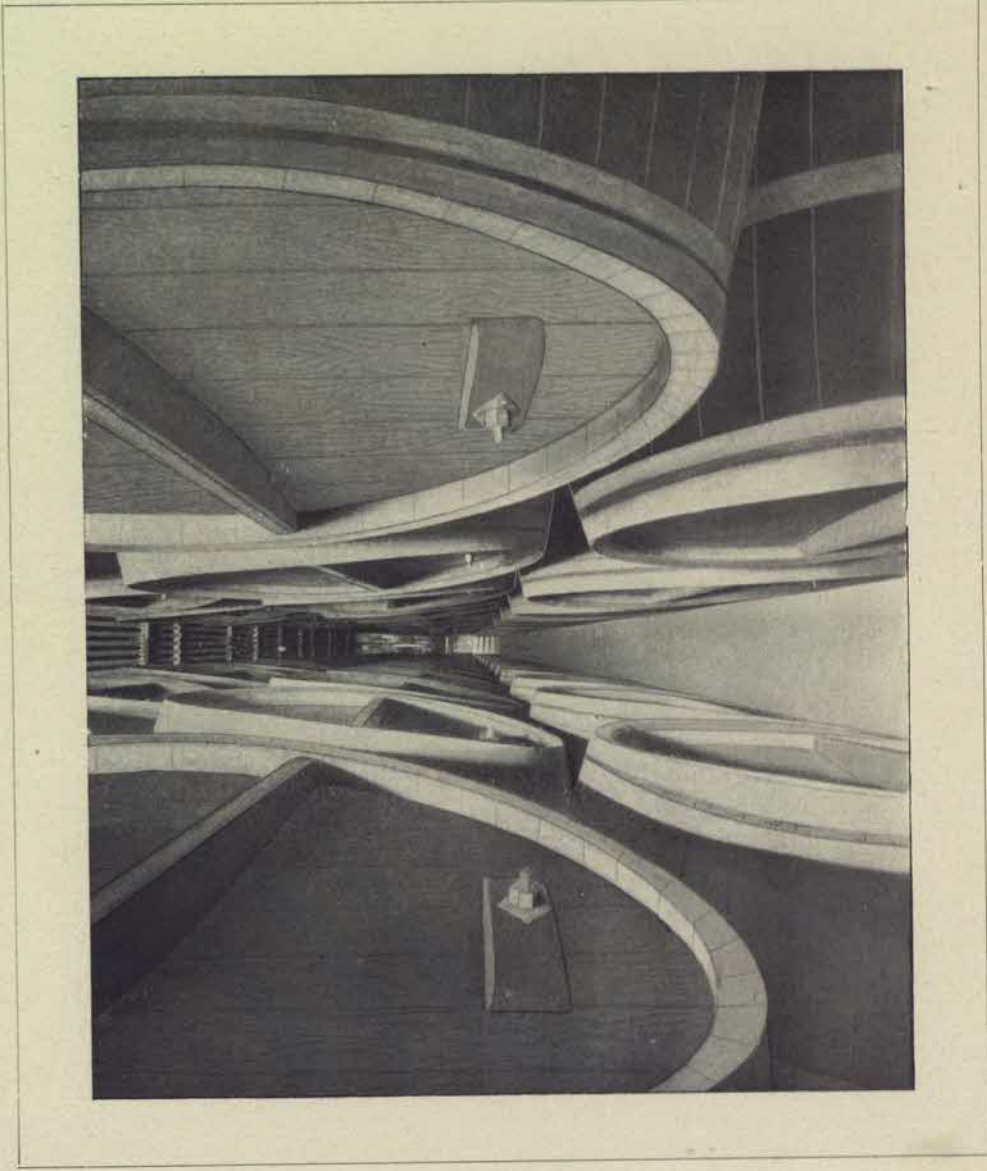




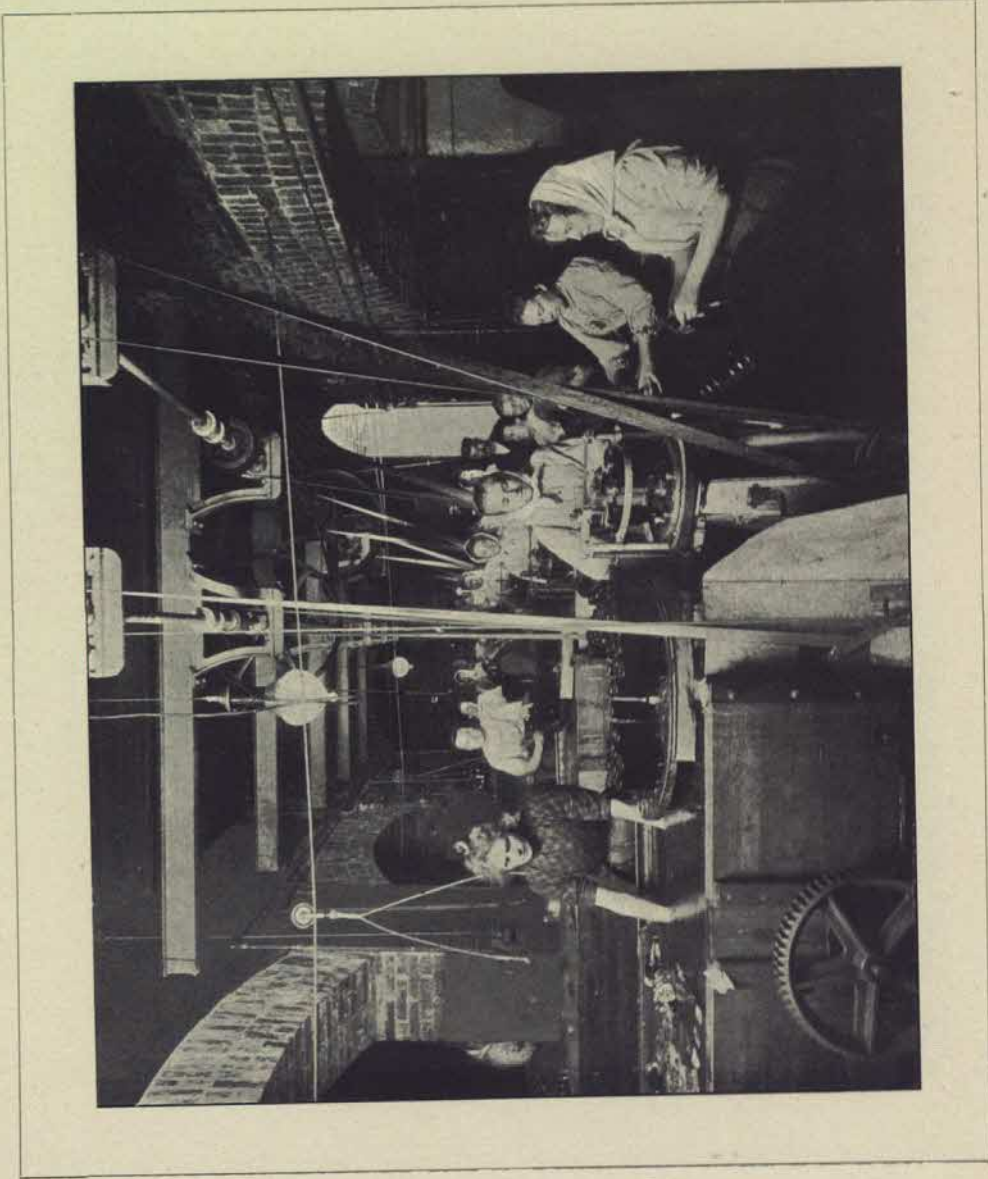


JÄSBOD.



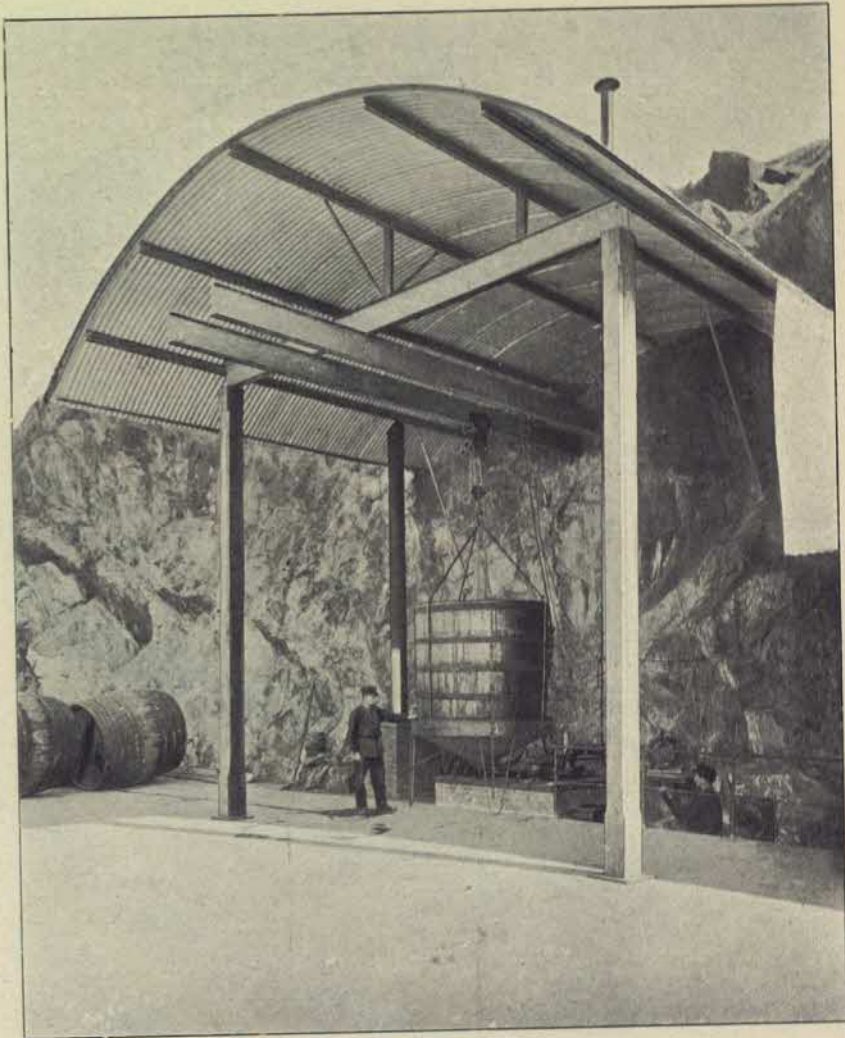


LAGERKÄLLARE.

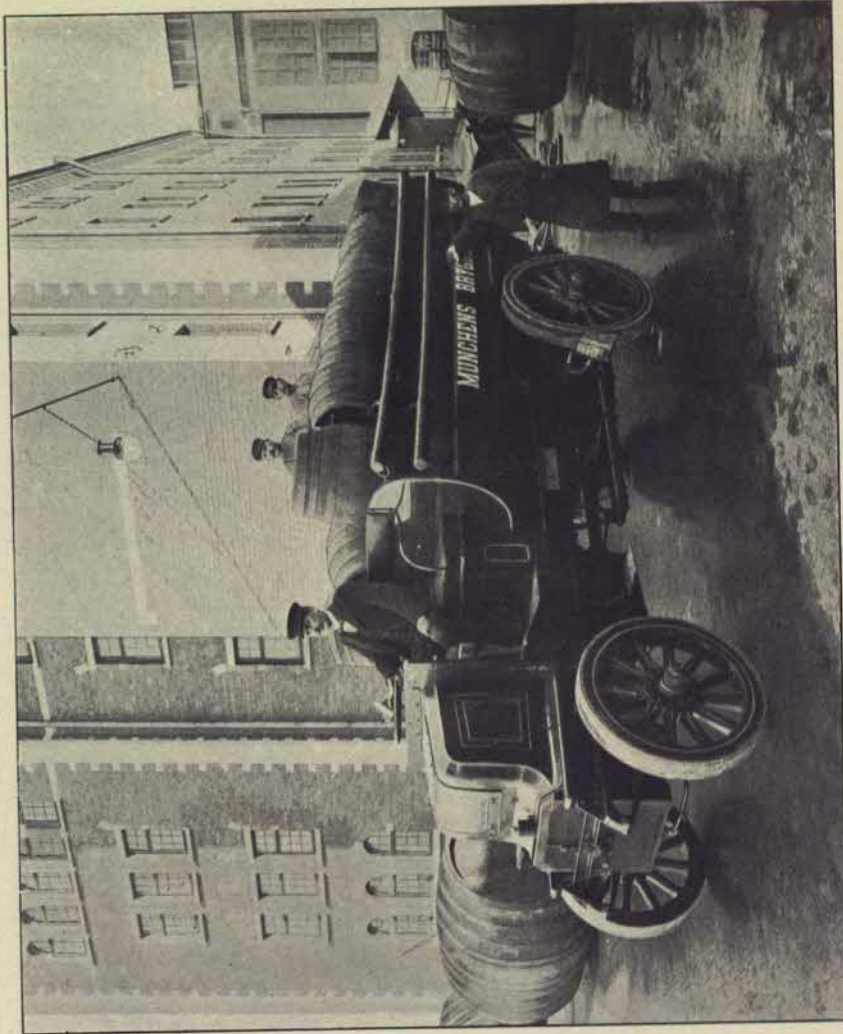


SKÖLJBOD.



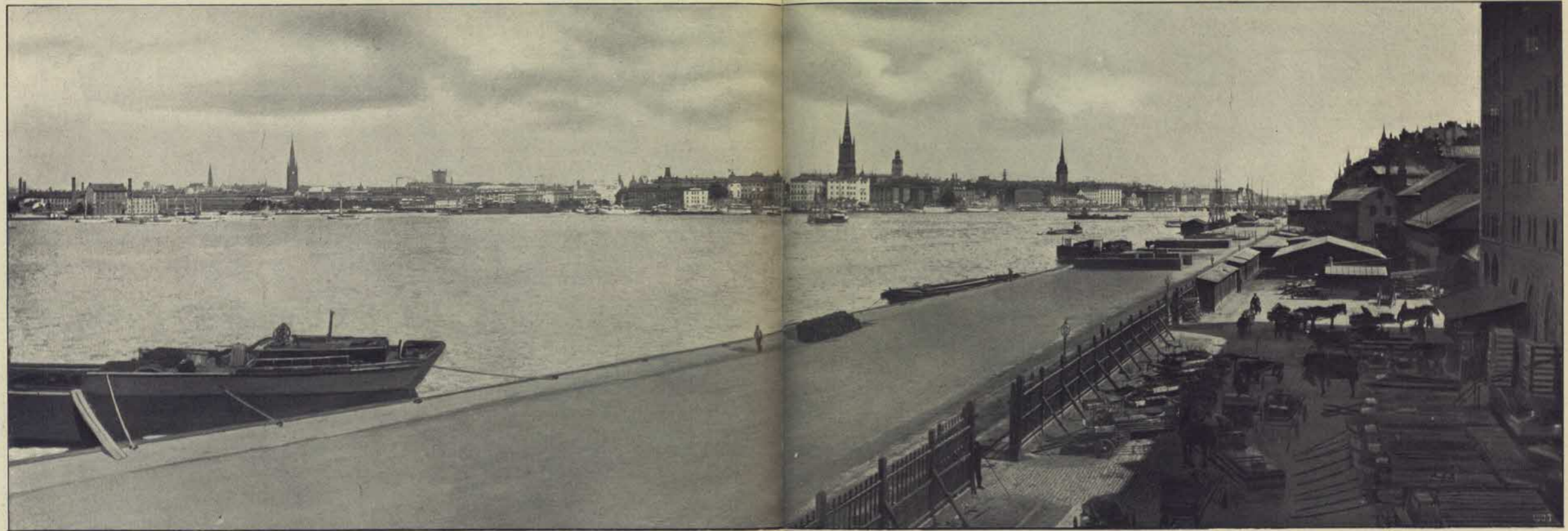


HARTZMASKIN.



FRAKTAUTOMOBIL.  
LASTAR 5 TON.





VY ÖFVER STOCKHOLM FRÅN BRYGGERIET.

