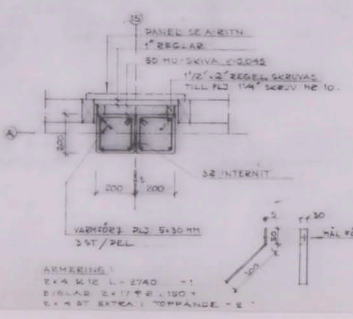
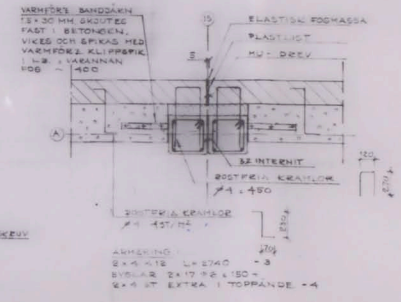


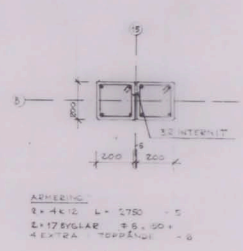
A 138 1:10
DILFÖG
(K123, K126)



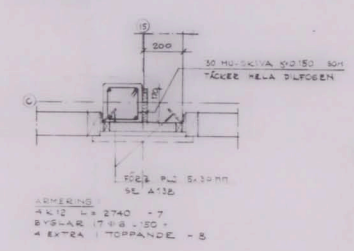
B 138 1:10
DILFÖG
(K123, K126)



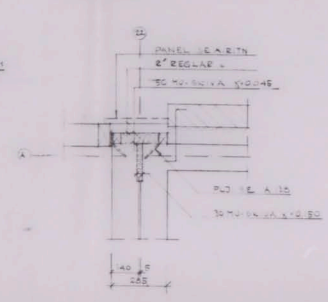
C 138 1:10
DILFÖG
(K123, K126)



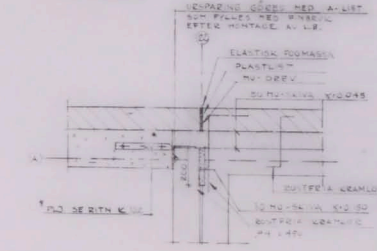
D 138 1:10
DILFÖG
(K123, K126)



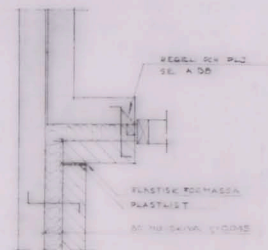
E 138 1:10
DILFÖG
(K123, K126)



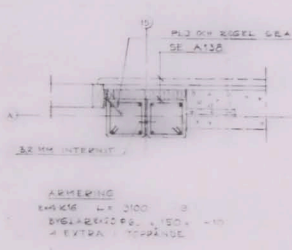
F 138 1:10
DILFÖG
(K123, K126)



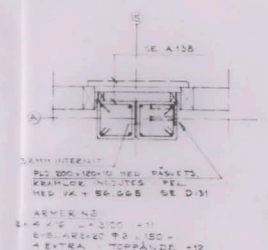
G 138 1:10
DILFÖG
(K122, K123, K125, K126)



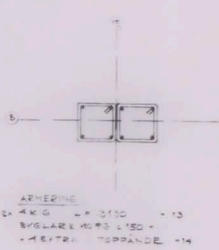
H 138 1:10
DILFÖG
(K122, K125)



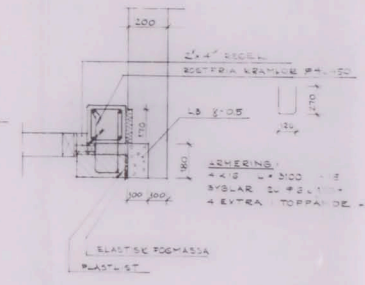
I 138 1:10
DILFÖG
(K122, K125)



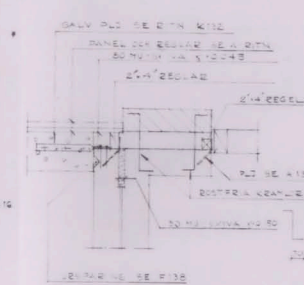
J 138 1:10
DILFÖG
(K122, K125)



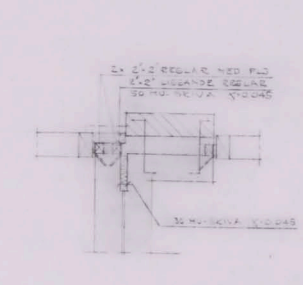
K 138 1:10
DILFÖG
(K122, K125)



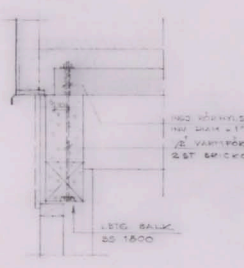
L 138 1:10
DILFÖG
(K121, K122, K124, K125)



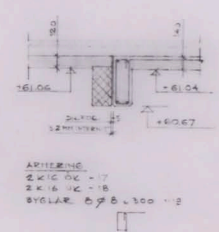
M 138 1:10
DILFÖG
(K121, K122, K124, K125)



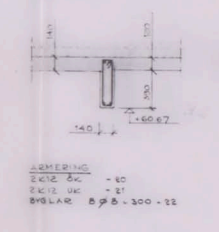
N 138 1:10
TRÖSTREK



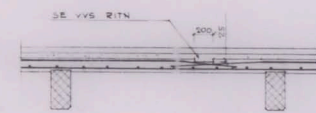
O 138 1:20
(K123, K126)



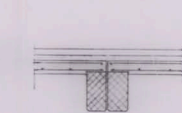
P 138 1:20
(K123, K126)



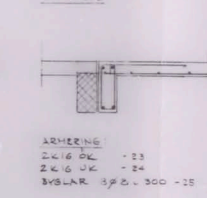
Q 138 1:20
(K122, K125)



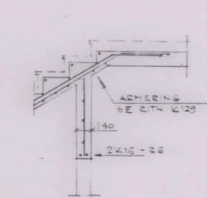
R 138 1:20
(K122, K125)



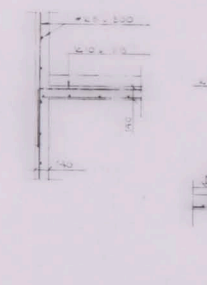
S 138 1:20
(K122, K125)



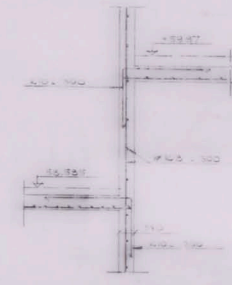
T 138 1:20
(K122, K125)



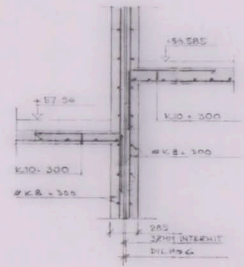
U 138 1:20
(K122, K125)



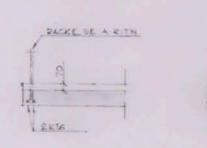
V 138 1:20
(K122, K125)



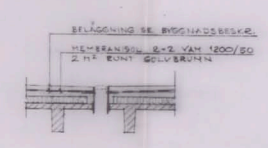
W 138 1:20
(K122, K125)



X 138 1:20
(K122, K125)

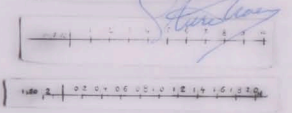


Y 138 1:20
(K121, K124)



Int. 1. Stockholms
stadsbyggnadskontor
15 Mars 1968
Dnr. 118201

KONSTRUKTIONSRITNING
Tjänste utförande beställning godkänd av
Stockholms stads byggnadsnämnd
den 28/3/68 med villor som
av protokollet för samma dag inlämnats.



ARBETSBESKRIFNINGER, RÅD NR 138/1

Table with columns for 'ARBETSRITNING', 'BREDÅNGSKOLAN KV. CONCORDIA', 'BREDÅNGS CENTRUM, STOCKHOLM', and 'HUS V'. It includes a grid for drawing details and a signature 'K138'.

118201